

Hydraulic Crawler Crane

# **CK1100G**

Max. Lifting Capacity : 110 US Tons

Max. Crane Boom Length : 200 ft

Max. Fixed Jib Combination : 190 ft + 60 ft



# **CK1100G**

## **CONTENTS**

**2** SPECIFICATIONS

---

**6** G-MODE

---

**7** LMI

---

**8** WINCH PERFORMANCE

---

**9** GENERAL DIMENSIONS

---

**10** DIMENSIONS & WEIGHT

---

**13** TRANSPORTATION PLAN

---

**14** SELF ASSEMBLY PROCEDURE

---

**15** COUNTERWEIGHT SELF-REMOVAL DEVICE

---

**16** BOOM & JIB ARRANGEMENTS

---

**17** WORKING RANGES

---

**20** SUPPLEMENTAL DATA

---

**21** LIFTING CAPACITY

---

**29** CLAMSHELL DATA

---

**32** BARGE DATA

---

# CK1100G

## SPECIFICATIONS

### General Description



<i>Type</i>	Crawler mounted, Lattice boom, Hydraulic controlled
<i>Maximum lift capacity</i>	220,000 lbs (99,800 kg) @ 11' operating radius (40' boom)
<i>Basic boom length</i>	40' (12.2 m)
<i>Maximum boom length</i>	200' (61.0 m)
<i>Basic boom &amp; jib length</i>	80' + 30' (24.4 m + 9.1 m)
<i>Maximum boom &amp; jib length</i>	190' + 60' (57.9 m + 18.3 m)
<i>Working weight</i>	Approx. 198,500 lbs (90,020 kg)
<i>Ground bearing pressure</i>	Approx. 12.9 psi (101 kPa)
<i>Gradeability</i>	40%

Calculations to determine working weight, ground bearing pressure, and gradeability include the weight of the upper and lower works of the crane, counterweights, and carbody weights, 40' boom and hook block.

### General Dimensions

<i>Height to top of gantry (lowered)</i>	10'10" (3.31 m)
<i>Width of upper machine w/operator's cab</i>	9'10" (2.99 m)*
<i>Radius of rear end (counterweights)</i>	15'5" (4.70 m)
<i>Counterweight ground clearance</i>	3'8" (1.12 m)
<i>Center of rotation to boom foot pin</i>	3'7" (1.10 m)
<i>Height from ground to boom foot pin</i>	5'10" (1.77 m)
<i>Height over gantry (raised)</i>	20'4" (6.19 m)
<i>Overall length of crawlers</i>	20'7" (6.28 m)
<i>Overall width of crawlers</i>	17'2" (5.24 m)
<i>Center to center, idler to sprocket</i>	17'10" (5.44 m)
<i>Shoe width</i>	36" (0.91 m)
<i>Ground clearance of body</i>	15" (0.39 m)

### Working Speed

<i>Hoist line speed (front and rear drums)</i>	390 ~ 10 ft/min (120 ~ 3 m/min)
<i>Lowering line speed (front and rear drums)</i>	390 ~ 10 ft/min (120 ~ 3 m/min)
<i>Boom hoist line speed (front and rear drums)</i>	230 ~ 6.6 ft/min (70 ~ 2 m/min)
<i>Boom lowering line speed (front and rear drums)</i>	230 ~ 6.6 ft/min (70 ~ 2 m/min)
<i>Swing speed (max.)</i>	4.0 rpm
<i>Travel speed (high/low)</i>	1.07/0.71 mph (1.7/1.1 km/h)

Line speed based on single line, no load, and first layer of rope on the drum.

### Upper Machinery

#### Power Plant:

<i>Diesel engine - make and model</i>	Hino J08E-UV (complies with Interim "Tier 4")
<i>No. of cylinders</i>	6
<i>Bore X stroke</i>	4-13/16" x 5-7/8" (122 mm x 150 mm)
<i>Cycles</i>	4
<i>Total displacement</i>	469 cu.in. (7.684 ℓ)
<i>Rated output SAE GROSS</i>	285 HP / 2,100 rpm (213 kW / 2,100 min <sup>-1</sup> )
<i>Maximum torque</i>	750 lbs-ft / 1,600 rpm (1,017 Nm / 1,600 min <sup>-1</sup> )
<i>Starter</i>	24 Volts / 5.0 kW
<i>Alternator</i>	24 Volts / 90 Amp
<i>Batteries</i>	Two 12 volt, 136 AH/5 HR capacity series connected.
<i>Radiator</i>	Corrugated type core, thermostatically controlled, with cleanout screen.
<i>Throttle</i>	Twist grip type hand throttle, electrically controlled, in conjunction with floor mounted pedal.
<i>Air cleaner</i>	Dry type with replaceable paper element.
<i>Fuel tank capacity</i>	106 US gal. (400 liters)
<i>Lube oil filters</i>	Full flow and by-pass type with element type.
<i>Fuel filter</i>	Replaceable paper element.



\* - 10'5" wide with Catwalks on cab side only.  
11' wide with Catwalks on both sides.



Self Lifting Device - Standard Equipment

### Counterweight and Carbody weight

Counterweight Base	1 x 18,200 (8,310 kg)
Counterweight (R)	2 x 12,700 (5,750 kg)
Counterweight (L)	2 x 12,700 (5,750 kg)
Total Counterweight	69,000 (31,310 kg)

Carbody weight	2 x 15,900 (7,200 kg)
Total Carbody weight	31,800 (14,400 kg)



### Hydraulic system

Maximum pressure rating  
4,626 psi (31.9MPa)

Cooling  
Oil to air heat exchanger

Filtration  
Full flow filters with replaceable paper elements

Reservoir capacity  
116.2 US gal. (440 liters)

### Hydraulic pumps:

#### Load hoist, boom hoist, and propel

2 piston pumps, max flow rate  
67.3 US gal/min x 2 (255 ℓ/min x 2)

#### Swing

1 piston pump, max flow rate  
46.7 US gal/min (177 ℓ/min)

#### Control system and auxiliary

2 Gear pumps, max flow rate  
16.3 US gal/min + 10.6 US gal (61.6 ℓ/min + 40.5 ℓ/min)

#### Brake cooling system

2 gear pumps, max flow rate  
19.4 US gal/min x 2 (73.5 ℓ/min x 2)

### Gantry

This high folding type gantry is fitted with a sheave frame for boom reeving. Hydraulic lift is standard. It provides full up, full down positions with linkage.

### Operators cab

Totally enclosed from weather, this full-vision cab has safety glass all around. The adjustable, high-backed seat with armrest is capable of adjustment with or without the control console. Auxiliary controls and instruments are on a side mounted console. A signal horn, windshield wipers, air conditioner/heater, and swing limiter are all standard features.

### Controls

At the operator's right are console-mounted adjustable short levers for the front and rear drum and the boom hoist control. Fine inching control and free fall activation switches are built in to the levers. Beside the seat on the right are two short levers for propel control, plus individual speed dial controls for front, rear, and boom drums. At the left is the console mounted swing lever, an optional 3rd drum control, switches for the front, rear, and boom drum pawls, and the engine start/stop key. A swing brake control switch and signal horn button are on the swing lever.

### Swing:

#### Swing unit

Hydraulic motor driving spur gears through planetary reducers to output swing pinion for 360 degree rotation.

#### Swing brake

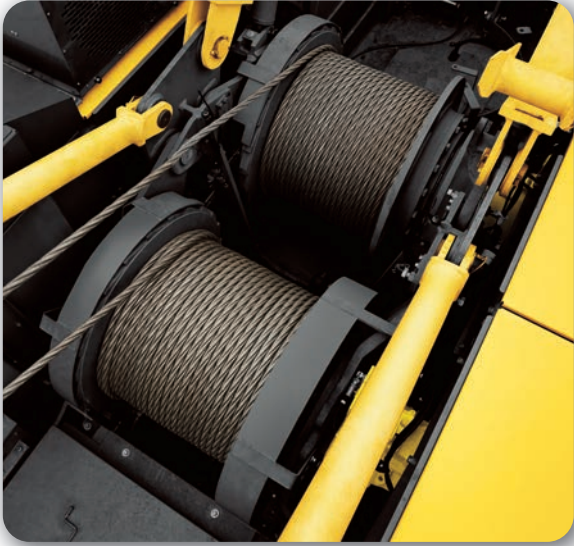
Spring set hydraulically released multiple disk brake mounted on swing motor.

#### Swing circle

Single row ball bearing with an integral internally cut swing gear.

#### Swing lock

Manual, 4 position lock for transportation.



### *Line pull:*

*Max. line pull (single line) - 46,800 lbf (208 kN)*

*Rated line pull - 25,200 lbf (112 kN)*

## **Lower Machinery**

### *Crawlers:*

Crawler assemblies can be hydraulically extended or retracted for wide track operation or retracted for transportation. Crawler belt tension adjusted with hydraulic jack and maintained by shims between the idler block and frame.

### *Crawler drive:*

The independent two speed hydraulic propel drive is built into each crawler side frame. Each drive consists of a hydraulic motor driving a propel sprocket through a planetary gear box. The hydraulic motor and gear box are built into the crawler side frame within the shoe width.

### *Crawler brakes:*

Spring set, hydraulically released, multiple disk-type parking brakes are built into each propel drive.

### *Steering mechanism:*

A hydraulic propel system provides both skid steering and counter rotating steering.

### *Crawler shoe:*

66 shoes - 36" wide, each crawler.

### *Track rollers:*

The track rollers are sealed for maintenance free operation.

### *Front drum:*

Front and rear drums for load hoist powered by hydraulic variable plunger motors, driven through planetary reducers.

### *Negative brake*

A spring-set, hydraulically released multiple disk brake is mounted on the hoist motor and operated through a counter-balance valve.

*Drum lock* External ratchet for locking drum

### *Drums:*

#### *Front drum -*

614 mm P.C.D. x 617 mm Lg., grooved for 26 mm wire rope. Rope capacity is 771' (235 m) working length and 1,181' (360 m) storage length.

#### *Rear drum -*

614 mm P.C.D. x 617 mm Lg., grooved for 26 mm wire rope. Rope capacity is 525' (160 m) working length and 1,181' (360 m) storage length.

#### *3rd drum (optional) -*

550 mm P.C.D. x 545 mm Lg., grooved for 22 mm wire rope. Rope capacity is 476' (145 m) working length and 1,099' (335 m) storage length.



### Crane Attachments

**Boom:**

The welded lattice construction uses tubular, high-tension steel chords with pin connections between sections.

<i>Maximum boom length</i>	200' (61.0 m)
<i>Basic boom length</i>	40' (12.2 m)
<i>Boom base section</i>	19'7" (5.97 m)
<i>Boom tip section</i>	22'8" (6.91 m)

**Boom insert (optional):**

Optional boom inserts are available to provide extension capabilities. They are robotic welded, laser aligned, lattice constructed with tubular, high-tension steel chords and pin connections.

<i>Boom insert</i>	10' (3.1 m), 20' (6.1 m), 40' (12.2 m)
--------------------	--

**Jib (optional):**

Jib inserts are available to provide extension capabilities. The optional jib employs welded lattice construction with tubular, high-tension steel chords with pin connections between sections.

<i>Maximum jib length</i>	60' (18.3 m)
<i>Basic jib length</i>	30' (9.1 m)
<i>Jib base section</i>	15'9" (4.8 m)
<i>Jib tip section</i>	16'5" (5.0 m)
<i>Jib insert</i>	10' (3.1 m), 20' (6.1 m)

Jib is useable on booms of 80' (24.4 m) through 190' (57.9 m)



**Auxiliary sheave (optional):**

Auxiliary sheave is extendible on booms of 40' (12.2 m) through 190' (57.9 m)

**Boom hoist reeving:**

Twelve (12) parts of 5/8" (16.0 mm) diameter high strength wire rope.

**Boom backstops:**

Telescopic type with spring bumper

### Standard Equipment

**Lights:**

- Two (2) front flood lights
- One (1) cab inside light

**Gauges and warning display**

**Gauges**

- One (1) tachometer
- One (1) hour meter
- One (1) fuel gauge
- One (1) water temperature

**Warning display**

- Battery charge
- Engine oil pressure
- Air cleaner
- Engine oil filter
- Control main pressure
- Hydraulic oil temperature
- DPF condition indicator

**Others**

- Air conditioner/heater
- Drum turn indicator (front/rear)
- Foot pedal / throttle
- Electric transfer pump
- Counterweight self-removal device
- KCross Telematics
- Free fall winches

### Safety Service

- Function lock lever
- Swing Limiter
- Boom over hoist limit switch
- Signal horn
- Front/rear hoist drum lock
- Swing Limiter (Buzzer, lamps, or stops)
- Overload prevention device (LMI)
- Hook over hoist shut off (Anti-two-block)
- Boom angle indicator
- Travel alarm

**Safety Service (cont)**

- Level indicator
- Boom hoist drum lock
- Swing locks, anti drift, and mechanical
- Boom backstops
- Boom base catwalk
- Upper machinery catwalk, handrails and ladder

### Tools and Accessories

A set of tools and accessories are furnished.

### Optional Equipment

- Third drum
- Hook block
- Hook ball
- Auxiliary sheave
- Fixed jib
- Boom inserts
- Carbody erection cylinder

### G-Mode

The G-modes are a standard exclusive energy and fuel saving system, with up to 30% in fuel savings. The G-Mode eliminates needless operations and engine functions allowing for reduced fuel consumption by using three basic modes that are all operator selectable.

#### Auto Idling Stop Mode (AIS):

*An Industry First*

The AIS mode can conserve fuel by stopping the engine, with an operator prompt, after 10 seconds of idling time. Restarting the engine is simple by just twisting the throttle.



#### G-Winch Mode:

*An Industry First*

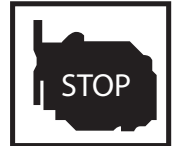
The G-winch mode can produce maximum winch line speed at a low engine RPM.



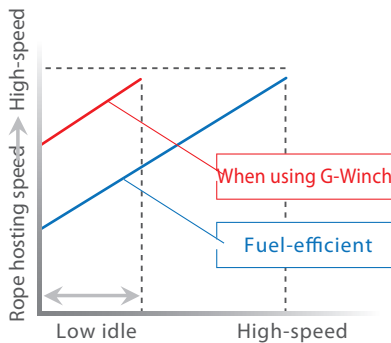
**G-Engine**



**G-Winch**



**AIS**



The high speed mode allows the line to be raised or lowered at maximum line speed without raising engine speed when lifting without a load.

#### G-Engine Mode:

*An Industry First*

The G-engine mode limits maximum engine speed to 1,750 RPM and controls the pumps to make engine operation in the most efficient condition.



#### Exhaust cleaning DPR:

The DPR (diesel particulate active reduction system) burns PM (particulate matter) collected by the DPF (diesel particulate filter) from the diesel exhaust gas, increasing the PM collection efficiency of the DPF, and recovering to purify the exhaust. This means that the exhaust gas from the diesel engine is cleaner, conforming with current EPA Interim Tier 4 regulations.



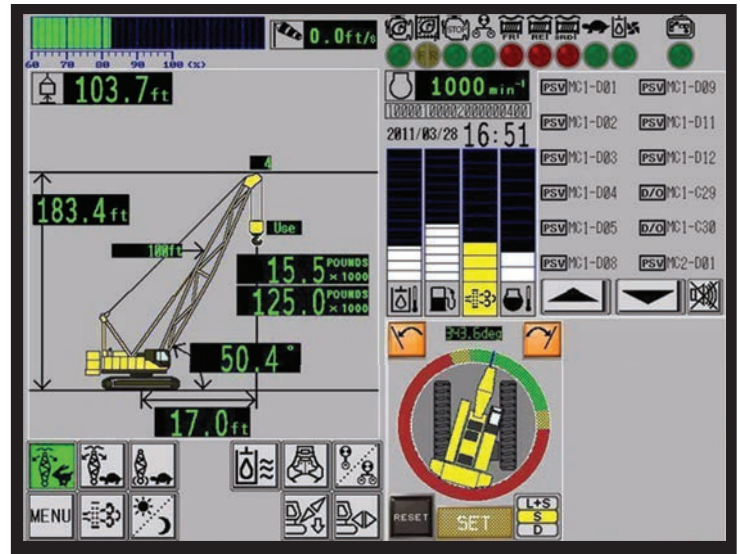
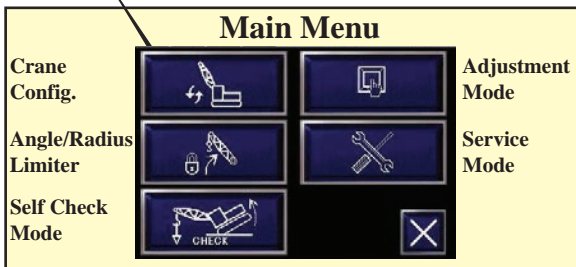
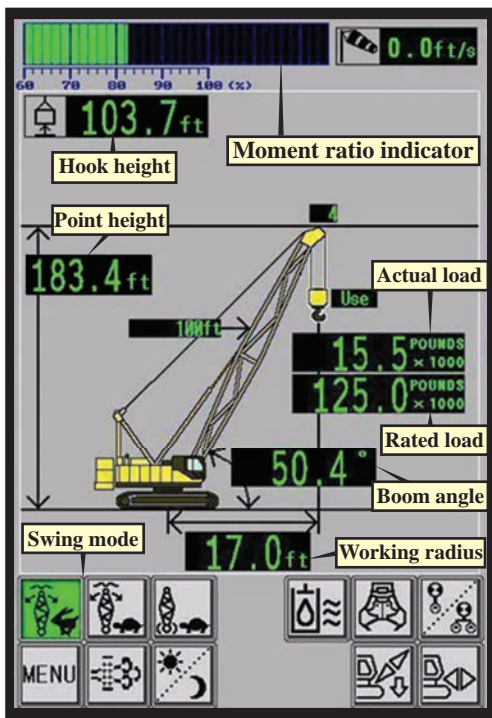
A new clean diesel system - although diesel engines consume less fuel and emit less CO<sub>2</sub> than gasoline engines, they also emit more harmful particulate matter and nitrogen oxide (NO<sub>x</sub>). The "new clean energy system" engine utilizes a DPF to reduce particulate matter, which is also kept to a minimum using negative ions. This system requires the use of low sulfur diesel.

\* Warning: High sulfur diesel will damage the engine.

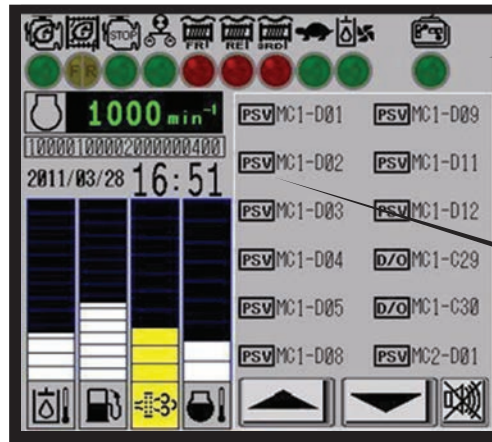
### Load Moment Indicator (LMI)

The Kobelco newly designed 12" touch panel screen with sunshade and screen protector is an industry first. This intuitive and easy to understand new touch screen monitor gives the operator a full display of essential data. Universal pictograms are used providing easy visual recognition, making this new technology easy to read and understand the information. This new monitor includes: Hook Height, Engine Speed, Display Lamp of standard functions, Gauges, Over-Swing Prevention Device, Switches, and Error Messages.

### Moment Limiter (Left Side)



### Gauges (Right Side)

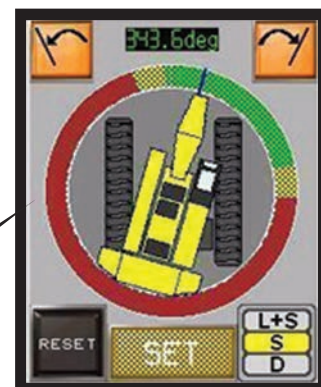


**Display Lamp**  
 Display lamp Remote control connection  
 G-Engine Oil cooler operation  
 G-Winch Free fall (auxiliary)  
 AIS operation Free fall (3rd)  
 Slow speed state

**Error Message**  
 Touch to display details in a pop-up window.

**Gauges**  
 Hydraulic oil temperature  
 Fuel gauge  
 Diesel particulate filter gauge  
 Coolant temperature  
 \* Figures for the above gauges are only shown when the bar is touched.

**Over-Swing Prevention**  
 An over-swing preventative device is standard. It limits the swing of the crane. Configuration is simple and can be done from the touch panel.





### Winch Performance Data

Note:

Line speed and line pull based on Hino J08E-UV at 2,100 rpm.

Line speed and line pull based on single line.

Max. line pull is based on referential performance, not wire rope strength.

#### Front & Rear Drum

Wire Rope Diameter = 26 mm

Rated Line Pull = 25,200 lbf (112 kN)

Maximum Line Pull = 46,800 lbf (208 kN)

Total Storage Capacity = 1,185 ft (361.2 m)

		Line speed (ft/min)					
Layer		1	2	3	4	5	6
0		393	421	449	476	504	
5,000		393	421	449	476	504	
10,000		387	414	440	467	494	
Line Pull (lbs)	15,000	360	360	348	348	348	storage only
	20,000	270	270	261	261	261	
	25,200	214	214	199	187	173	
	30,000	166	149	140	138	136	
	35,000	120	118	114	109		
	40,000	100	95				
	Storage Capacity (ft)	139	149	159	169	179	

#### Third Drum (for Load hoist)

Wire Rope Diameter = 22 mm

Rated Line Pull = 17,000 lbf (78.5 kN)

Maximum Line Pull = 32,400 lbf (144 kN)

Total Storage Capacity = 1,099 ft (334.9 m)

		Line speed (ft/min)					
Layer		1	2	3	4	5	6
0		394	394	394	394	394	
5,000		394	394	394	394	394	
10,000		227	227	227	227	227	
Line Pull (lbs)	15,000	147	152	161	170	179	storage only
	17,000	142	151	160	169	178	
	20,000	140	149	158	167	176	
	25,000	138	147	155	164	172	
	30,000	136	144				
Storage Capacity (ft)	130	139	148	157	166	175	

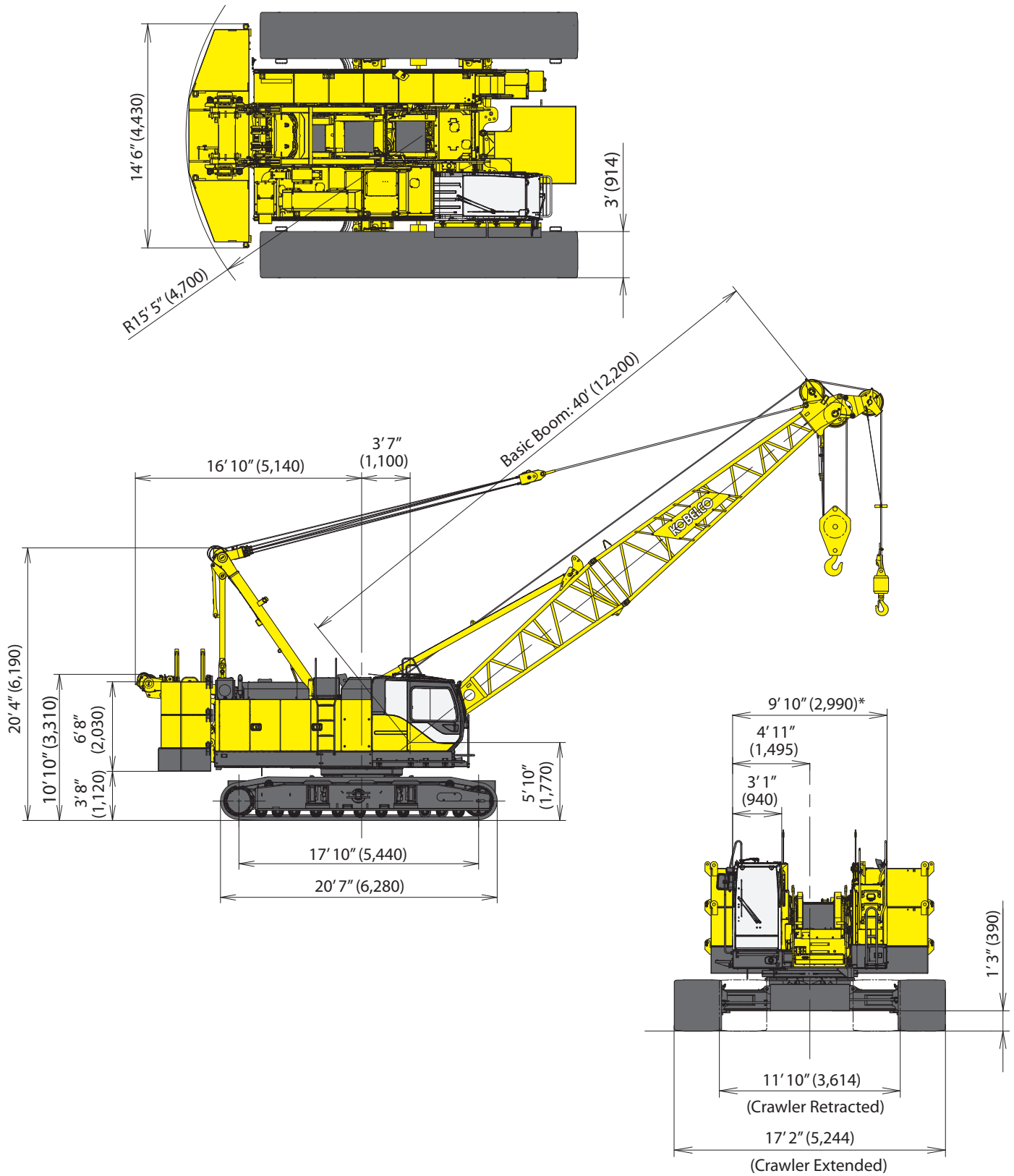
### Wire Rope Specifications

Use	Construction	No load diameter	Length	Safety Factor	Required minimum breaking strength
Front drum	6 x 29 Filler IWRC Right hand lay, Regular lay	1.049" to 1.070" (26.65 mm to 27.17 mm)	771ft (235 m)	3.5: 1	120,048 lbf (534 kN)
Rear drum	6 x 29 Filler IWRC Right hand lay, Regular lay	1.049" to 1.070" (26.65 mm to 27.17 mm)	525ft (160 m)	3.5: 1	120,048 lbf (534 kN)
Boom drum	6 x 31 P+Warrington seal Right hand lay, Regular lay	0.646" to 0.658" (16.40 mm to 16.72 mm)	492ft (150 m)	3.5: 1	47,210 lbf (210 kN)
Third drum (Optional)	6 x 29 Filler IWRC Right hand lay, Regular lay	0.888" to 0.905" (22.55 mm to 22.99 mm)	476ft (145 m)	3.5: 1	81,606 lbf (363 kN)

# CK1100G

## SPECIFICATIONS

### General Dimensions



\* - 10'5" wide with Catwalks on cab side only.  
11' wide with Catwalks on both sides.

# CK1100G

## SPECIFICATIONS

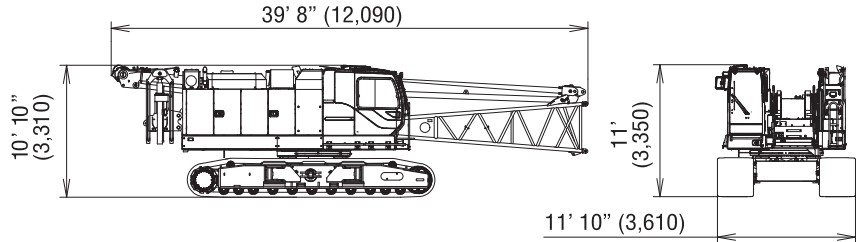
### Dimensions and Weight

Dimensions: ft-in (mm) Weight: lbs (kg)

#### Base Machine - 1

Weight: 95,200 lbs (43,150 kg)

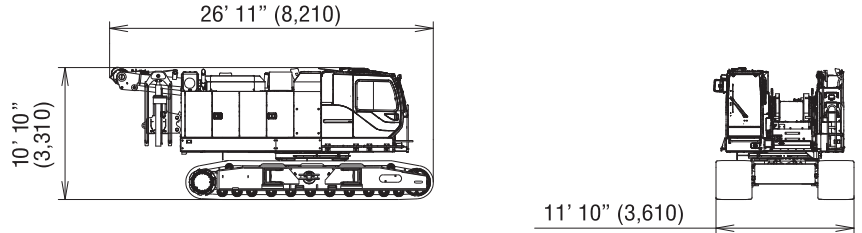
Boom base, gantry, crawlers, self removal unit, and wire ropes (front, rear, and boom hoist)



#### Base Machine - 2

Weight: 90,600 lbs (41,090 kg)

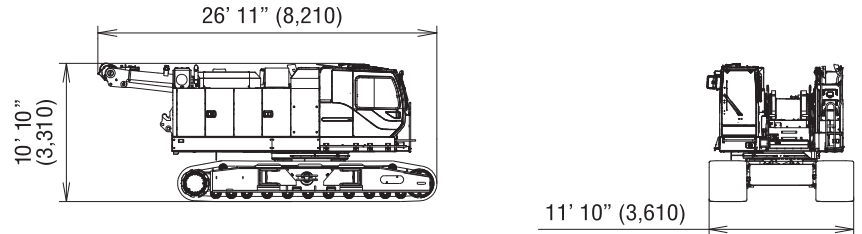
Gantry, crawlers, self removal unit, and wire ropes (front, rear, and boom hoist)



#### Base Machine - 3

Weight: 88,700 lbs (40,230 kg)

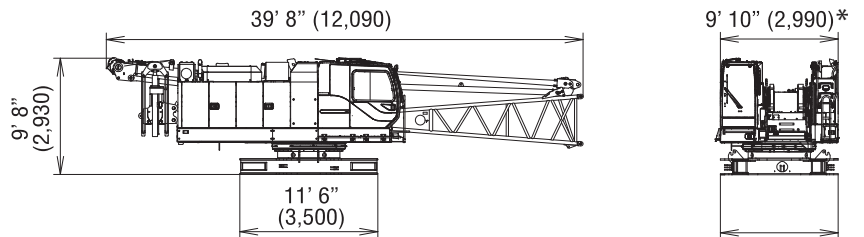
Gantry, crawlers, and wire ropes (front, rear, and boom hoist)



#### Base Machine - 4

Weight: 61,500 lbs (27,880 kg)

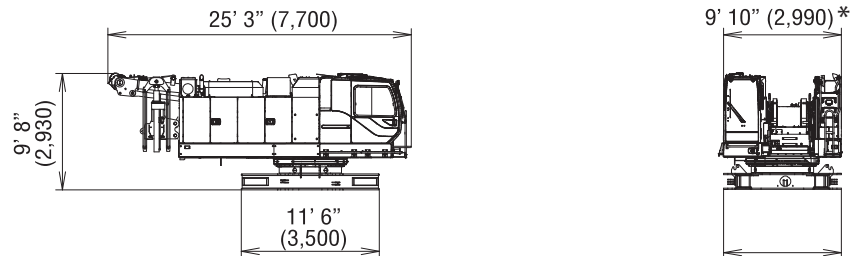
Boom base, gantry, self removal unit, and wire ropes (front, rear, and boom hoist)



#### Base Machine - 5

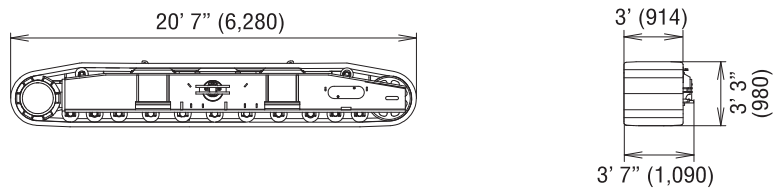
Weight: 56,900 lbs (25,820 kg)

Gantry, self removal unit, and wire ropes (front, rear, and boom hoist)



#### Crawler

Weight: 16,850 lbs (7,640 kg)



\* - 10'5" wide with Catwalks on cab side only.  
11' wide with Catwalks on both sides.

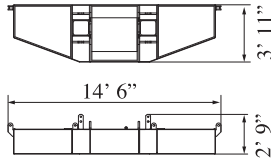
# CK1100G

## SPECIFICATIONS

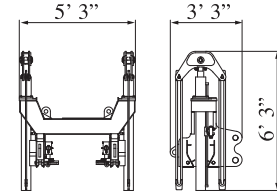
### Dimensions and Weight

Dimensions: ft-in (mm) Weight: lbs (kg)

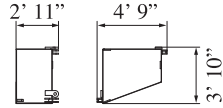
**Counterweight Base**  
Weight: 18,200 lbs (8,310 kg)



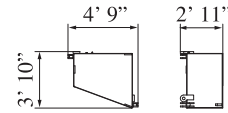
**Self Removal Unit**  
Weight: 1,900 lbs (870 kg)



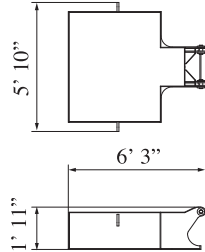
**Counterweight (R)**  
Weight: 12,700 lbs (5,750 kg)



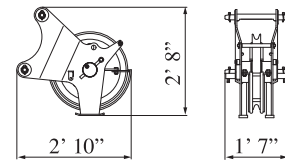
**Counterweight (L)**  
Weight: 12,700 lbs (5,750 kg)



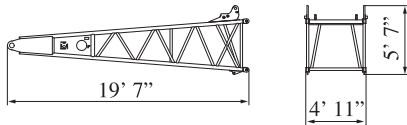
**Carbody Weight**  
Weight: 15,900 lbs (7,200 kg)



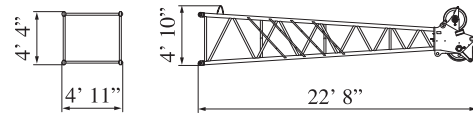
**Auxiliary Sheave**  
Weight: 430 lbs (195 kg)



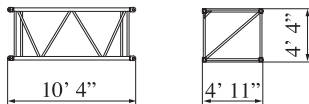
**Boom Base**  
Weight: 3,400 lbs (1,517 kg)



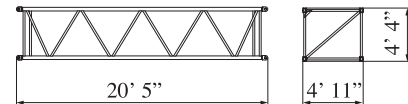
**Boom Tip**  
Weight: 2,900 lbs (1,292 kg)  
Includes cable roller and guy lines



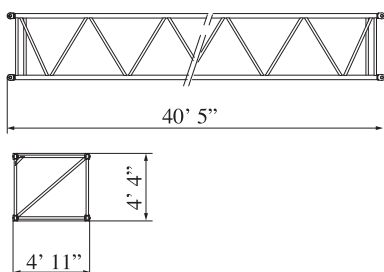
**10 ft (3.0 m) Insert Boom**  
Weight: 800 lbs (364 kg)  
Includes cable roller and guy lines



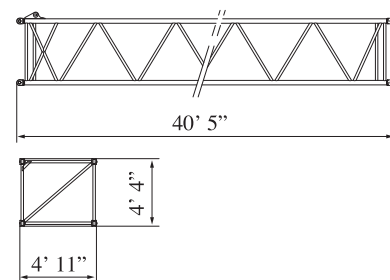
**20 ft (6.1 m) Insert Boom**  
Weight: 1,400 lbs (613 kg)  
Includes cable roller and guy lines



**40 ft (12.2 m) Insert Boom**  
Weight: 2,400 lbs (1,098 kg)  
Includes cable roller and guy lines



**40 ft (12.2 m) Insert Boom (with lug)**  
Weight: 2,500 lbs (1,113 kg)  
Includes cable roller and guy lines

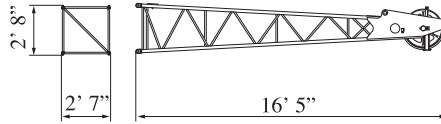


### Dimensions and Weight

Dimensions: ft-in (mm) Weight: lbs (kg)

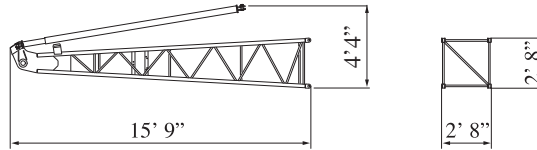
#### Jib Tip

Weight: 500 lbs (227 kg)  
Includes cable roller.



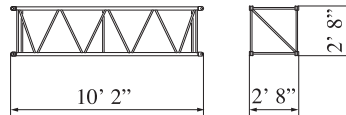
#### Jib Base and Strut

Weight: 1,400 lbs (637 kg)  
Includes guy line.



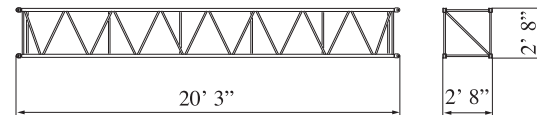
#### 10 ft (3.0 m) Insert Jib

Weight: 280 lbs (128 kg)  
Includes cable roller and guy line.



#### 20 ft (6.1 m) Jib Insert

Weight: 480 lbs (218 kg)  
Includes cable roller and guy line.



## Transportation Plan

Refer to pages 10-12

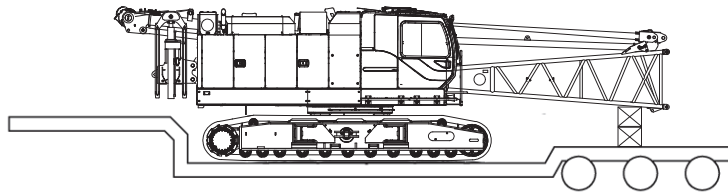
### Shipping plan for 150 ft Boom

Description of Item	Weight		Trailer Loads			
	lbs	(kg)	#1	#2	#3	#4
Base Machine with Boom Base and Crawlers*	95,200	(43,150)	1			
Counterweight Base	18,200	(8,310)		1		
Counterweight (L)	12,700	(5,750)			2	
Counterweight (R)	12,700	(5,750)		1	1	
Carbody Weight	15,900	(7,200)				2
10 ft Insert Boom and Guy Line	800	(364)			1	
20 ft Insert Boom and Guy Line	1,400	(613)		1		
40 ft Insert Boom and Guy Line	2,400	(1,098)			1	
40 ft Insert Boom (w/ Lug) and Guy Line (A)	2,500	(1,113)				1
Boom Tip and Guy Line	2,900	(1,292)		1		
Jib Base and Guy Line	1,400	(637)				
10 ft Insert Jib and Guy Line	280	(128)				
20 ft Insert Jib and Guy Line	480	(218)				
Jib Tip	500	(227)				
75 Ton Block	3,000	(1,361)		1		
13 Ton Ball	800	(365)		1		
Ladder Assembly	90	(41)				1
Support Box	5,000	(2,268)				1
<b>Approx. Total Shipping Weight</b>	<b>lbs</b>		<b>95,200</b>	<b>39,000</b>	<b>41,300</b>	<b>39,390</b>
	<b>(kg)</b>		<b>(43,150)</b>	<b>(17,691)</b>	<b>(18,712)</b>	<b>(17,822)</b>

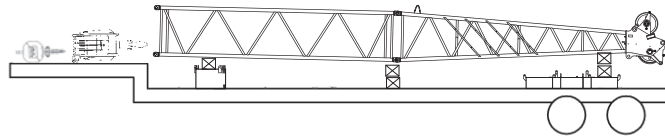
\* Third drum is not included. Add 4,200 lbs if third drum is installed.

Loads for transportation were targeted at 45,000 lbs, 8' 6" wide, 48' long and 13' 6" high from ground, 48" step deck. This may vary depending on truck/trailer weight, style of trailer and state law.

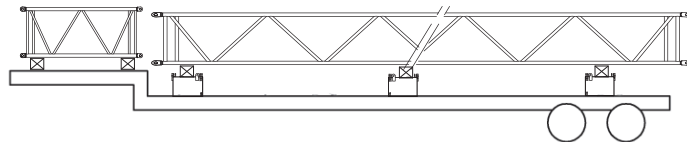
**Trailer #1**



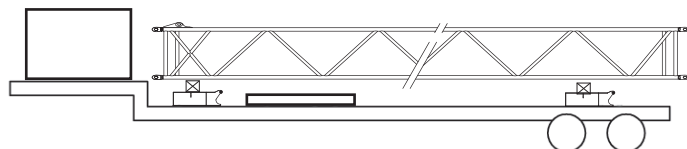
**Trailer #2**



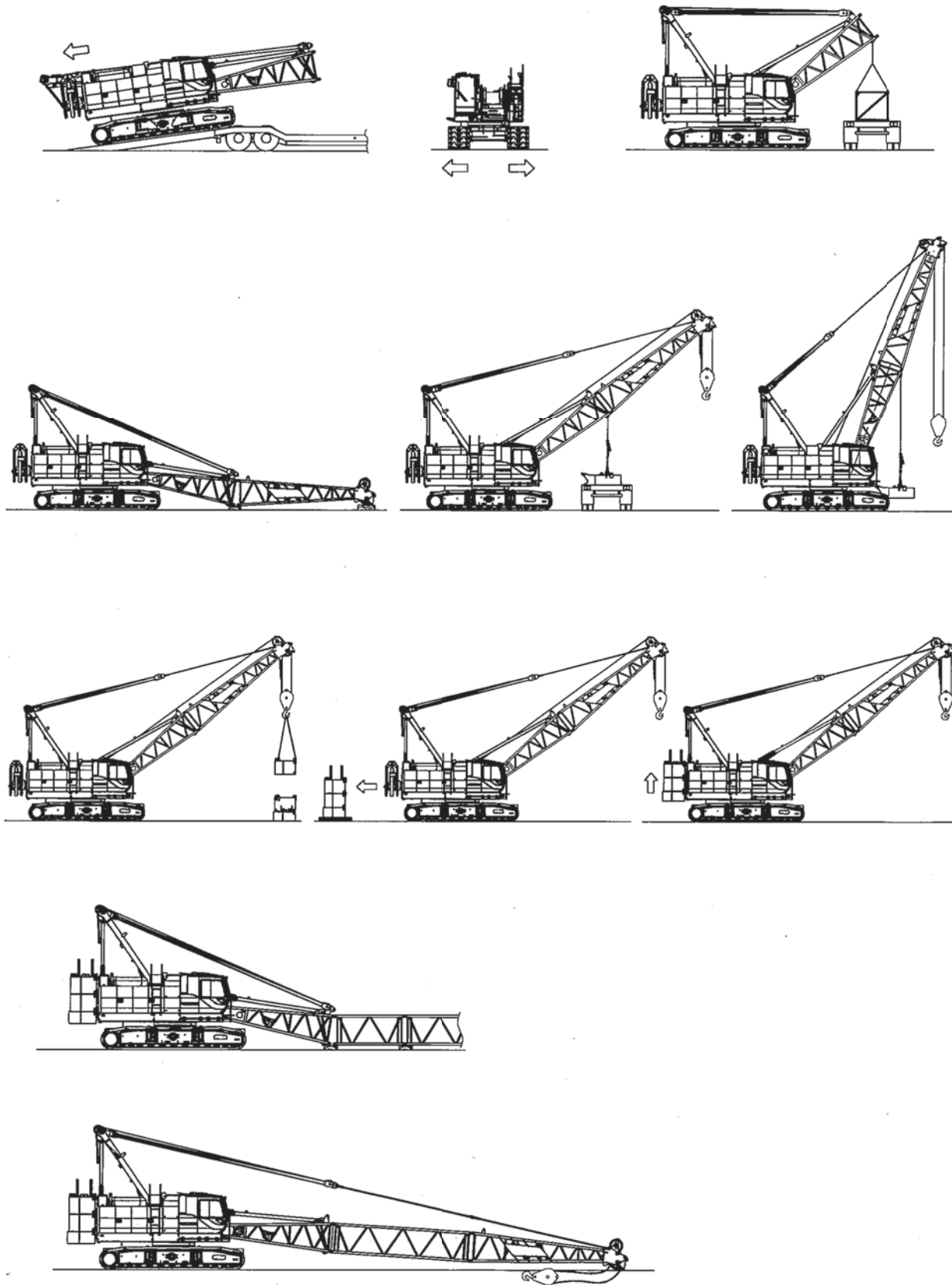
**Trailer #3**



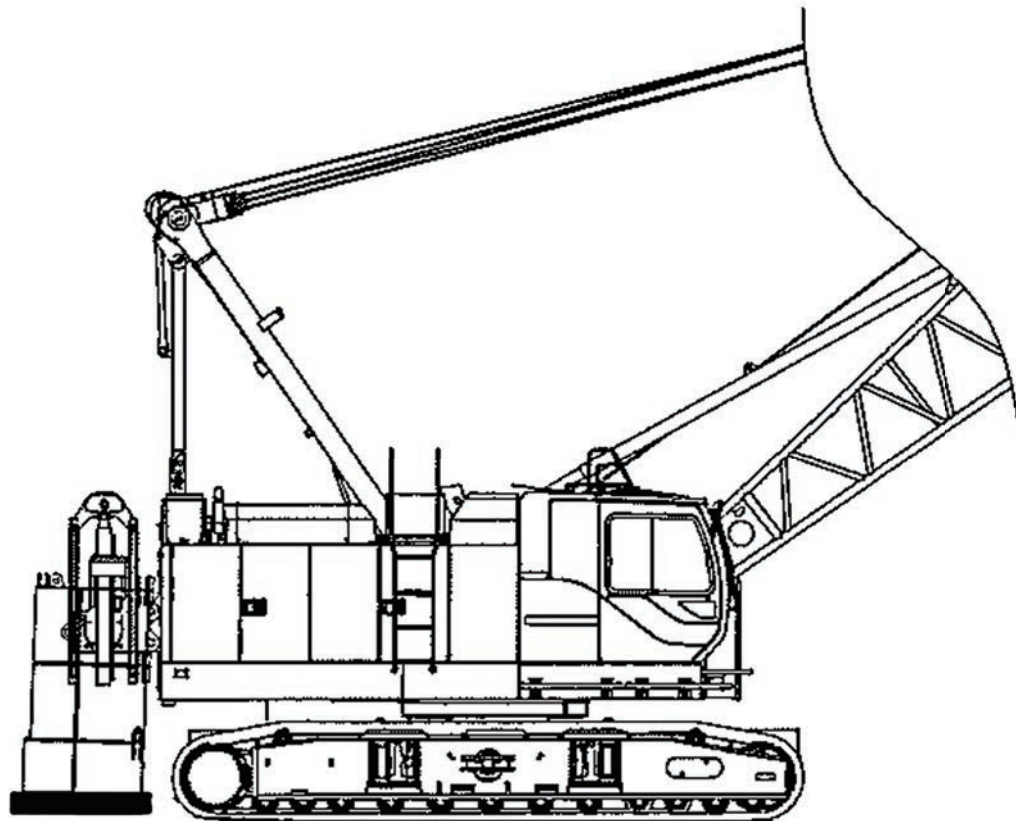
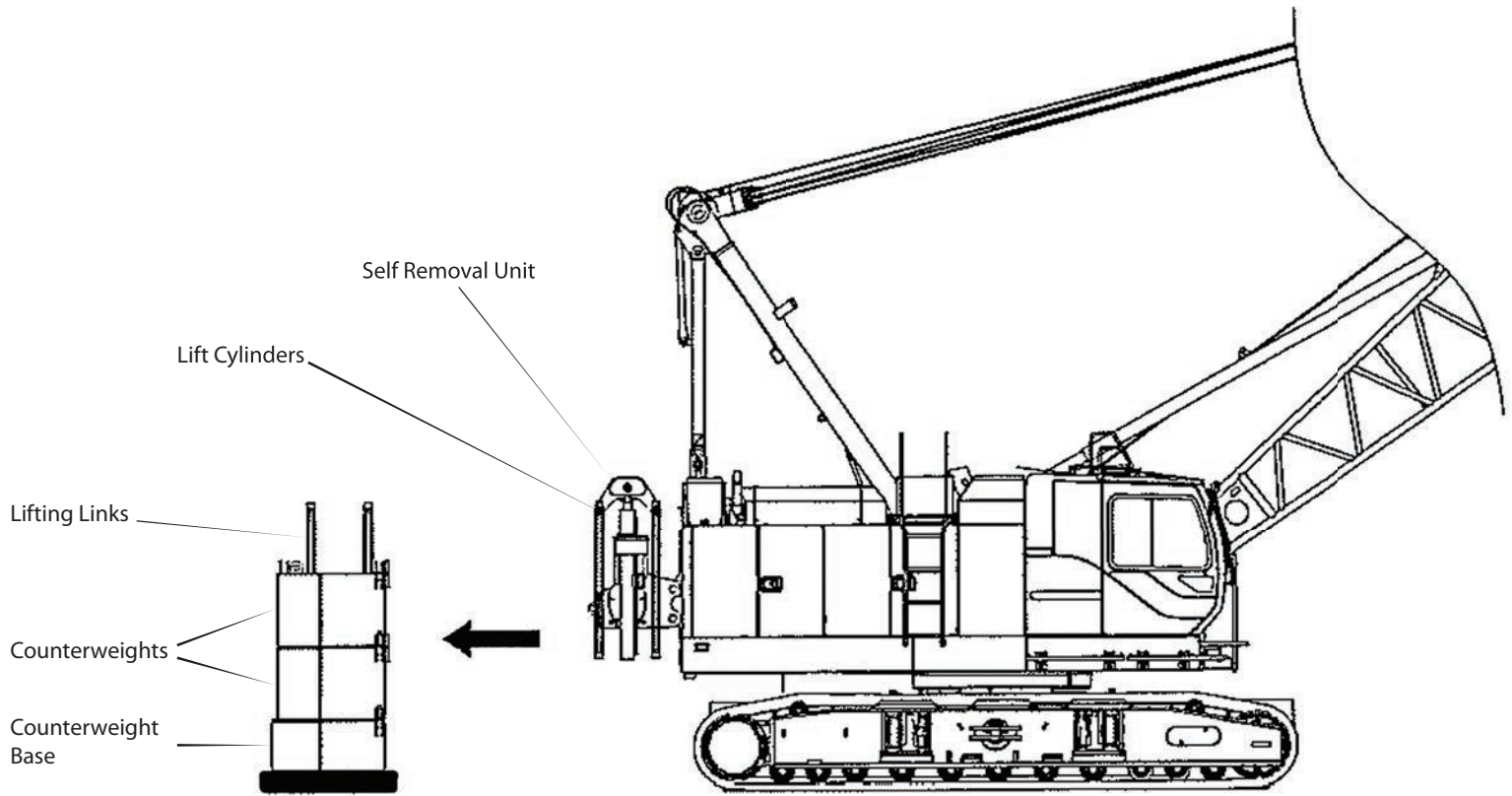
**Trailer #4**



### Self-Assembly Procedure



### Counterweight Self-Removal Device





### Boom and Fixed Jib Arrangement

#### Boom Arrangement

Boom length ft (m)	Boom arrangement
40 (12.2)	
50 (15.2)	
60 (18.3)	※
70 (21.3)	※
80 (24.4)	※
90 (27.4)	※
100 (30.5)	※
110 (33.5)	※
120 (36.6)	※
130 (39.6)	※
140 (42.7)	※

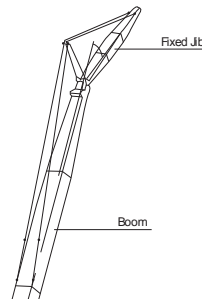
Boom length ft (m)	Boom arrangement
150 (45.7)	※
160 (48.8)	※
170 (51.8)	※
180 (54.9)	※
190 (57.9)	※
200 (61.0)	※

Symbol	Boom Length	Remarks
	20.0 ft (6.1 m)	Boom Base
	20.0 ft (6.1 m)	Boom Top
	10.0 ft (3.1 m)	Insert Boom
	20.0 ft (6.1 m)	Insert Boom
	40.0 ft (12.2 m)	Insert Boom
	40.0 ft (12.2 m)	Insert Boom with lug

↗ mark shows the guy line installing position when the jib is used.

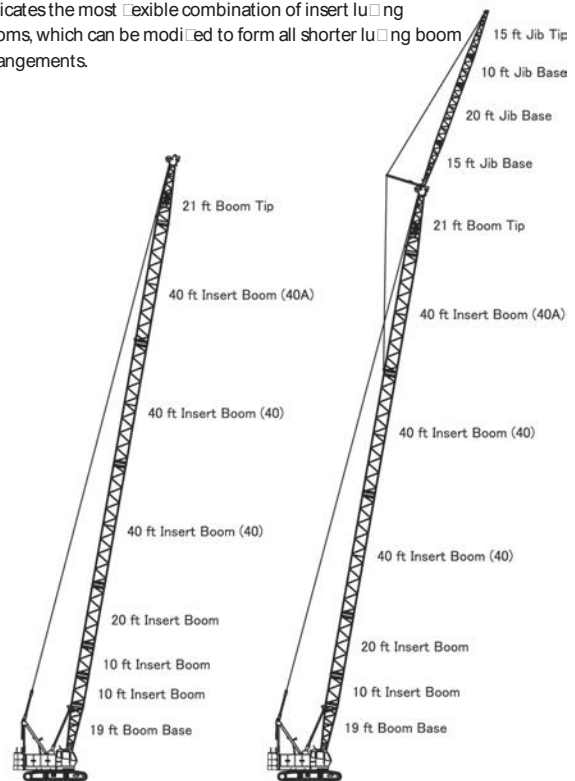
※ indicates the most flexible combination of insert lugs booms, which can be modified to form all shorter lugging boom arrangements.

#### Fixed Jib Arrangement



Crane boom length	Jib length ft (m)	Jib arrangement
80 ft (24.4 m)	30 (9.1)	
	40 (12.2)	
190 ft (57.9 m)	50 (15.2)	
	60 (18.3)	

Symbol	Jib Length	Remarks
	15 ft (4.6 m)	Jib Base
	15 ft (4.6 m)	Jib Top
	10 ft (3.0 m)	Insert Jib
	20 ft (6.1 m)	Insert Jib



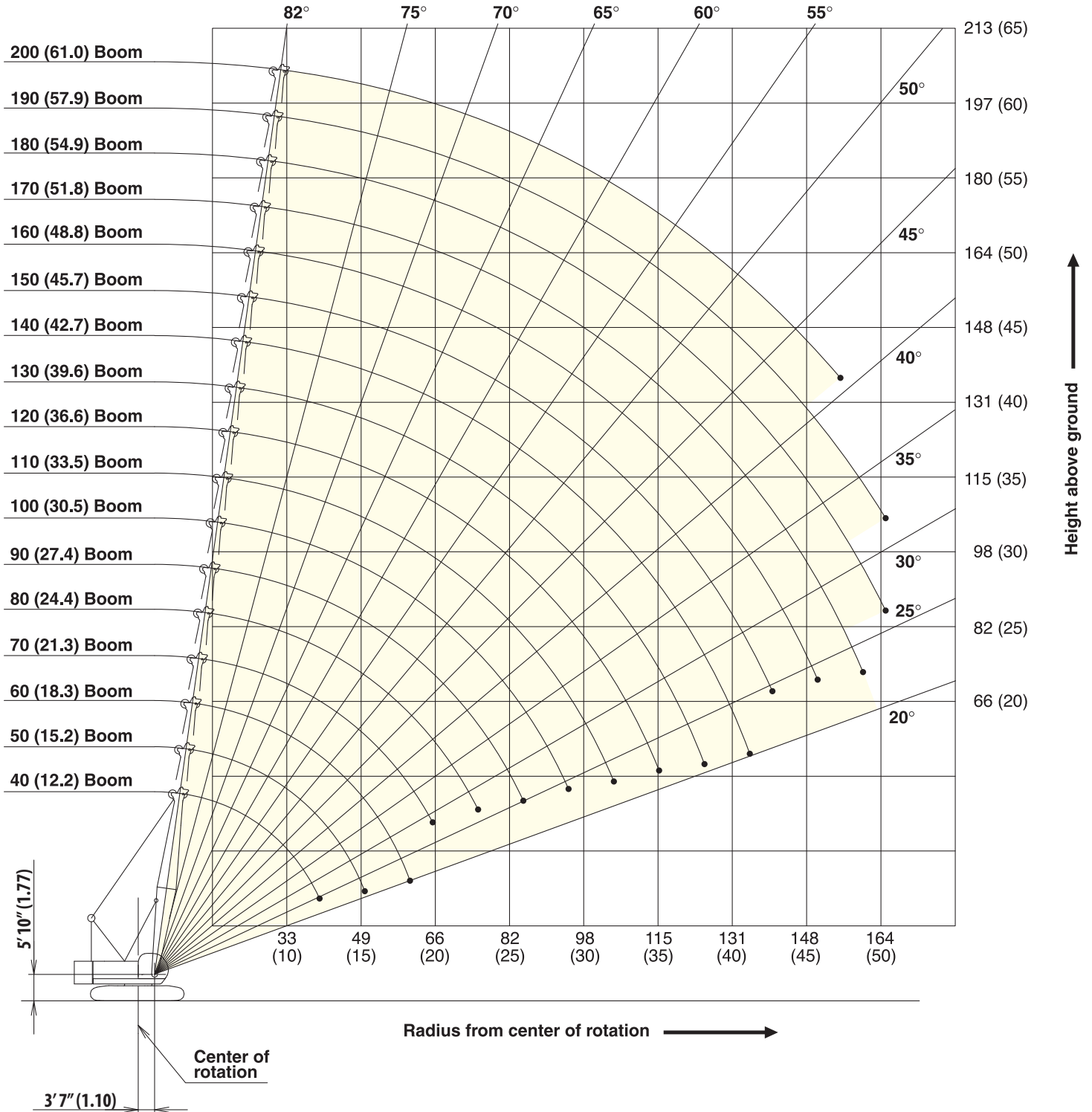
Main Boom - 200 ft (61.0 m)

Main Boom - 190 ft (57.9 m)  
Fixed Jib - 60 ft (18.3 m)

### Working Ranges

#### Main Boom

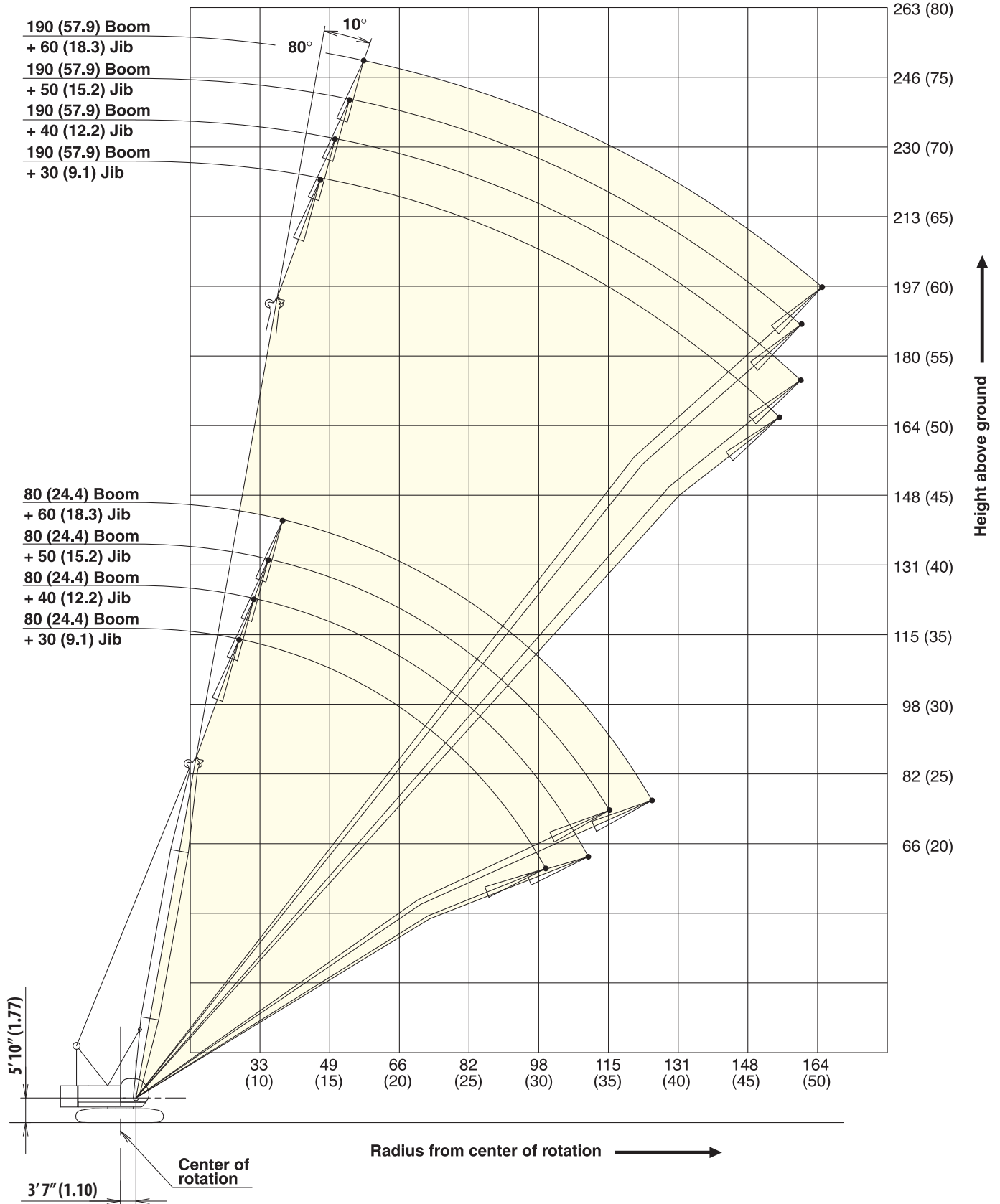
Unit : ft (m)



### Working Ranges

Fixed Jib 10°

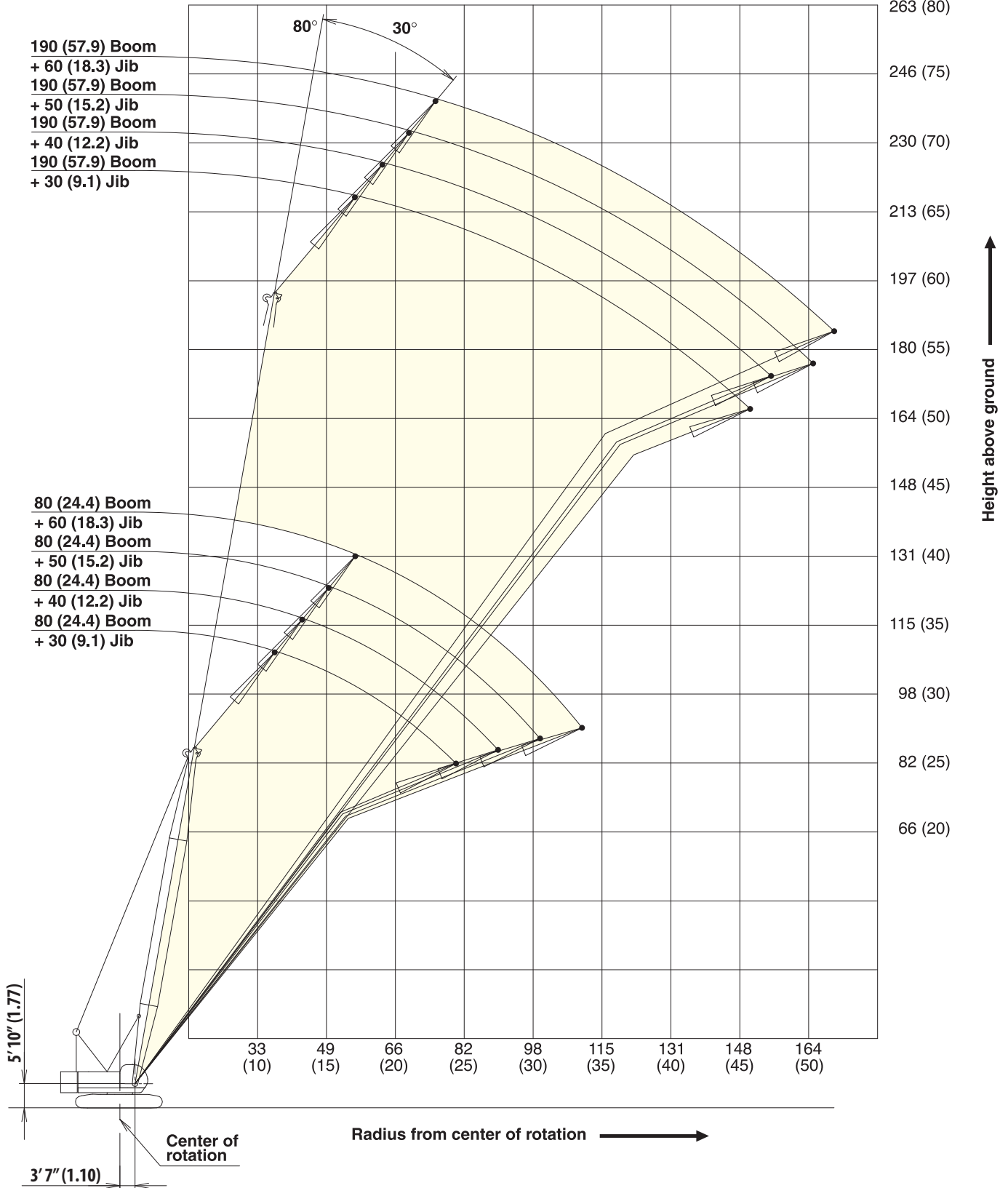
Unit : ft (m)



### Working Ranges

Fixed Jib 30°

Unit : ft (m)



## Supplemental Data

1. Rated loads included in the charts are the maximum allowable freely suspended loads at a given boom length, boom angle and load radius, and have been determined for the machine standing level on firm supporting surface under ideal operating conditions. The user must limit or de-rate rated loads to allow for adverse conditions (such as soft or uneven ground, out-of-level conditions, wind, side loads, pendulum action, jerking or sudden stopping of loads, inexperience of personnel, multiple machine lifts, and traveling with a load).
2. Rated loads do not exceed 75% of minimum tipping loads. Rated loads based on factors other than machine stability such as structural competence are shown by asterisk \* in the charts.
3. The machine must be reeved and set-up as stated in the operation manual and all the instruction manuals if these manuals are missing, obtain replacements.
  - The crane must be leveled to within 1% on a firm supporting surface.
  - Boom backstops are required for all boom length.
  - Gantry must be fully raised position for all operations.
4. Do not attempt to lift where no radius on load is listed as crane may tip or collapse.
5. Attempting to lift more than rated loads may cause machine to tip or collapse. Do not tip machine to determine rated loads.
6. Weight of hooks, hook blocks, slings and other lifting devices are a part of the total load. Their total weight must be subtracted from the rated load to obtain the weight that can be lifted.
7. When lifting over boom point with jib or auxiliary sheave, rated loads for the boom must be deducted as shown below.

Jib Length	Aux Sheave	30 ft	40 ft	50 ft	60 ft
Deduct (lbs)	430	2,500	3,700	5,100	6,700

8. The total load that can be lifted by jib is limited by rated jib loads.
9. Boom lengths for jib mounting are 80 ft (24.4 m) to 190 ft (57.9 m)
10. The total load that can be lifted by the auxiliary sheave is the value for 430 lbs deducted from rated load for the boom (without auxiliary sheave installed); however, the auxiliary sheave rated load should not exceed 24,000 lbs.

11. Boom lengths that can attach auxiliary sheave are from 40 ft (12.2 m) to 190 ft (57.9 m).
12. The boom should be erected over the front of the crawlers, not laterally. When lifting from or lowering to the ground the boom at length of 190 ft (57.9 m) with jib, the blocks for erections must be placed at the end of the crawlers.
13. Least stable position is over the side.
14. Maximum hoist load for number of reeving parts of line for hoist rope.

#### Maximum Load for Main Boom

No. of Parts of line	1	2	3	4	5
Maximum Loads (lbs)	25,200	50,400	75,600	100,800	126,000

No. of Parts of line	6	7	8
Maximum Loads (lbs)	151,200	176,400	220,000

#### Maximum Load for Fixed Jib

No. of Parts of line	1
Maximum Loads (lbs)	24,000

#### Maximum Load Auxiliary Sheave

No. of Parts of line	1
Maximum Loads (lbs)	24,000

15. Rated loads listed apply only to the machine as originally manufactured and designed by KOBELCO CRANES CO., LTD. Modifications to this machine or use of equipment other than that specified can reduce operating capacity.
16. Designed and rated to comply with ANSI Code B30.5.

# CK1100G

## SPECIFICATIONS

### Main Boom Lift Capacity

Full Counterweight: 69,000 lbs      Carbody Weight: 31,800

40' Boom			50' Boom			60' Boom			70' Boom			80' Boom		
Load Radius (ft)	Boom Angle (deg.)	360° Rated Load (lbs)	Load Radius (ft)	Boom Angle (deg.)	360° Rated Load (lbs)	Load Radius (ft)	Boom Angle (deg.)	360° Rated Load (lbs)	Load Radius (ft)	Boom Angle (deg.)	360° Rated Load (lbs)	Load Radius (ft)	Boom Angle (deg.)	360° Rated Load (lbs)
11.0	80.5	220,000 *	12.0	81.2	213,200 *	13.0	81.7	200,400 *	15.0	81.3	151,000 *	16.0	81.6	151,000 *
12.0	79.0	213,300 *	13.0	80.0	200,600 *	14.0	80.7	187,400 *	16.0	80.4	151,000 *	17.0	80.9	149,300 *
13.0	77.5	200,800 *	14.0	78.9	187,800 *	15.0	79.8	175,200 *	17.0	79.6	149,400 *	18.0	80.2	146,500 *
14.0	76.0	188,100 *	15.0	77.7	175,600 *	16.0	78.8	164,800 *	18.0	78.7	146,700 *	19.0	79.5	139,400 *
15.0	74.6	175,900 *	16.0	76.6	165,300 *	17.0	77.8	155,500 *	19.0	77.9	139,800 *	20.0	78.8	131,800 *
16.0	73.1	165,500 *	17.0	75.4	156,000 *	18.0	76.8	146,900 *	20.0	77.1	132,200 *	22.0	77.3	115,100 *
17.0	71.6	156,300 *	18.0	74.2	147,400 *	19.0	75.9	139,800 *	22.0	75.4	115,400 *	24.0	75.8	101,000 *
18.0	70.1	147,800 *	19.0	72.9	140,100 *	20.0	74.9	132,200 *	24.0	73.7	101,300 *	26.0	74.3	89,200 *
19.0	68.5	140,500 *	20.0	71.7	132,400 *	22.0	72.9	115,100 *	26.0	72.0	89,600 *	28.0	72.8	80,500 *
20.0	66.9	132,800 *	22.0	69.3	115,300 *	24.0	70.9	100,800 *	28.0	70.3	80,800 *	30.0	71.2	72,800 *
22.0	63.7	115,600 *	24.0	66.8	101,000 *	26.0	68.8	89,100 *	30.0	68.5	73,000 *	32.0	69.7	66,600 *
24.0	60.4	101,300 *	26.0	64.3	89,400 *	28.0	66.7	80,500 *	32.0	66.7	67,000 *	34.0	68.2	61,600 *
26.0	57.0	89,600 *	28.0	61.7	80,700 *	30.0	64.6	72,800 *	34.0	64.9	62,000 *	36.0	66.6	57,300 *
28.0	53.4	80,900 *	30.0	59.1	73,000 *	32.0	62.5	66,600 *	36.0	63.0	57,800 *	38.0	65.1	53,100 *
30.0	49.8	73,300 *	32.0	56.3	67,000 *	34.0	60.3	61,600 *	38.0	61.2	53,600 *	40.0	63.5	49,300 *
32.0	45.8	67,200 *	34.0	53.4	62,000 *	36.0	58.0	57,300 *	40.0	59.3	49,800 *	42.0	61.8	46,600 *
34.0	41.2	61,700 *	36.0	50.3	57,800 *	38.0	55.7	53,100 *	42.0	57.3	46,900 *	44.0	60.2	43,800 *
36.0	36.2	56,600 *	38.0	47.3	53,600 *	40.0	53.4	49,300 *	44.0	55.3	44,100 *	46.0	58.5	41,100 *
38.0	31.1	51,500 *	40.0	44.0	49,800 *	42.0	50.9	46,600 *	46.0	53.3	41,300 *	48.0	56.8	39,100 *
40.0	25.4	45,900 *	42.0	40.4	47,000 *	44.0	48.3	43,800 *	48.0	51.2	39,400 *	50.0	55.1	37,100 *
			44.0	36.7	44,300 *	46.0	45.8	41,100 *	50.0	49.0	37,400 *	55.0	50.5	32,700 *
			46.0	32.9	41,500 *	48.0	42.8	39,200 *	55.0	43.2	33,200 *	60.0	45.7	29,200 *
			48.0	27.6	38,300 *	50.0	39.9	37,200 *	60.0	36.9	29,600 *	65.0	40.4	26,300 *
			50.0	22.3	35,100 *	60.0	20.7	28,600 *	65.0	29.2	26,800 *	75.0	26.9	22,100 *
Reeves		8	Reeves		8	Reeves		8	Reeves		6	Reeves		6
90' Boom			100' Boom			110' Boom			120' Boom			130' Boom		
Load Radius (ft)	Boom Angle (deg.)	360° Rated Load (lbs)	Load Radius (ft)	Boom Angle (deg.)	360° Rated Load (lbs)	Load Radius (ft)	Boom Angle (deg.)	360° Rated Load (lbs)	Load Radius (ft)	Boom Angle (deg.)	360° Rated Load (lbs)	Load Radius (ft)	Boom Angle (deg.)	360° Rated Load (lbs)
17.0	81.9	125,800 *	19.0	81.6	125,600 *	20.0	81.8	100,800 *	22.0	81.6	98,700 *	24.0	81.3	85,100 *
18.0	81.3	125,800 *	20.0	81.0	123,600 *	22.0	80.8	100,800 *	24.0	80.6	94,200 *	26.0	80.4	83,900 *
19.0	80.7	125,800 *	22.0	79.9	112,200 *	24.0	79.7	96,500 *	26.0	79.6	88,000 *	28.0	79.5	78,200 *
20.0	80.0	124,000 *	24.0	78.7	100,600 *	26.0	78.6	88,500 *	28.0	78.6	79,900 *	30.0	78.6	71,900 *
22.0	78.7	112,500 *	26.0	77.5	88,900 *	28.0	77.6	80,200 *	30.0	77.7	72,200 *	32.0	77.7	65,900 *
24.0	77.4	100,800 *	28.0	76.3	80,200 *	30.0	76.5	72,400 *	32.0	76.7	66,100 *	34.0	76.9	60,900 *
26.0	76.1	89,100 *	30.0	75.1	72,400 *	32.0	75.4	66,300 *	34.0	75.7	61,100 *	36.0	75.9	56,600 *
28.0	74.8	80,500 *	32.0	74.0	66,300 *	34.0	74.3	61,300 *	36.0	74.7	56,800 *	38.0	75.0	52,300 *
30.0	73.5	72,800 *	34.0	72.8	61,300 *	36.0	73.2	57,000 *	38.0	73.7	52,500 *	40.0	74.1	48,400 *
32.0	72.1	66,600 *	36.0	71.6	57,000 *	38.0	72.2	52,700 *	40.0	72.7	48,700 *	42.0	73.2	45,600 *
34.0	70.8	61,600 *	38.0	70.3	52,700 *	40.0	71.1	48,900 *	42.0	71.7	45,800 *	44.0	72.2	42,800 *
36.0	69.4	57,300 *	40.0	69.1	48,900 *	42.0	70.0	46,200 *	44.0	70.7	43,000 *	46.0	71.3	40,000 *
38.0	68.0	53,100 *	42.0	67.9	46,200 *	44.0	68.9	43,400 *	46.0	69.7	40,200 *	48.0	70.4	38,000 *
40.0	66.6	49,300 *	44.0	66.6	43,400 *	46.0	67.8	40,700 *	48.0	68.6	38,300 *	50.0	69.4	36,000 *
42.0	65.2	46,500 *	46.0	65.4	40,700 *	48.0	66.6	38,700 *	50.0	67.6	36,300 *	55.0	67.1	31,600 *
44.0	63.8	43,700 *	48.0	64.1	38,700 *	50.0	65.4	36,600 *	55.0	65.0	32,000 *	60.0	64.6	28,100 *
46.0	62.4	40,900 *	50.0	62.8	36,600 *	55.0	62.5	32,300 *	60.0	62.3	28,300 *	65.0	62.2	25,200 *
48.0	60.9	38,900 *	55.0	59.5	32,300 *	60.0	59.5	28,700 *	65.0	59.6	25,400 *	70.0	59.6	22,900 *
50.0	59.4	36,900 *	60.0	56.1	28,700 *	65.0	56.5	25,900 *	70.0	56.8	23,200 *	75.0	57.0	20,900 *
55.0	55.7	32,500 *	65.0	52.5	25,900 *	70.0	53.2	23,500 *	75.0	53.8	21,200 *	80.0	54.3	19,000 *
60.0	51.7	29,000 *	70.0	48.8	23,500 *	75.0	49.9	21,400 *	80.0	50.8	19,400 *	85.0	51.6	17,500 *
65.0	47.4	26,100 *	75.0	44.8	21,400 *	80.0	46.4	19,600 *	85.0	47.7	17,700 *	90.0	48.7	16,100 *
70.0	42.9	23,800 *	80.0	40.5	19,600 *	85.0	42.6	18,100 *	90.0	44.3	16,500 *	95.0	45.6	15,000 *
75.0	37.9	21,800 *	85.0	36.0	18,100 *	90.0	38.6	16,800 *	95.0	40.7	15,300 *	100.0	42.4	14,000 *
80.0	32.2	20,100 *	90.0	30.5	16,900 *	95.0	34.1	15,600 *	100.0	36.9	14,200 *	110.0	35.4	12,100 *
85.0	25.7	18,600 *	95.0	24.0	15,800 *	100.0	29.1	14,600 *	110.0	27.8	12,600 *	120.0	26.6	10,800 *
						105.0	23.2	13,770 *	115.0	22.2	11,840 *	125.0	21.3	10,230 *
Reeves		5	Reeves		5	Reeves		4	Reeves		4	Reeves		4

Note: Designed and rated to comply with ANSI Code B30.5  
 Capacities based on factors other than machine stability such as structural competence are shown by asterisk \* in the charts.  
 Refer to notes on page 20.

# CK1100G

## SPECIFICATIONS

### Main Boom Lift Capacity

Full Counterweight: 69,000 lbs    Carbody Weight: 31,800

140' Boom			150' Boom			160' Boom			170' Boom			180' Boom			
Load Radius (ft)	Boom Angle (deg.)	360° Rated Load (lbs)	Load Radius (ft)	Boom Angle (deg.)	360° Rated Load (lbs)	Load Radius (ft)	Boom Angle (deg.)	360° Rated Load (lbs)	Load Radius (ft)	Boom Angle (deg.)	360° Rated Load (lbs)	Load Radius (ft)	Boom Angle (deg.)	360° Rated Load (lbs)	
24.0	81.9	72,900 *	26.0	81.7	62,200 *	28.0	81.5	50,200 *	30.0	81.3	44,500 *	30.0	81.8	39,300 *	
<b>26.0</b>	<b>81.1</b>	<b>71,800 *</b>	<b>28.0</b>	<b>80.9</b>	<b>61,300 *</b>	<b>30.0</b>	<b>80.8</b>	<b>50,100 *</b>	<b>32.0</b>	<b>80.7</b>	<b>43,900 *</b>	<b>32.0</b>	<b>81.2</b>	<b>38,800 *</b>	
28.0	80.3	70,800 *	30.0	80.1	60,400 *	32.0	80.1	49,700 *	34.0	80.0	43,200 *	34.0	80.5	38,200 *	
<b>30.0</b>	<b>79.4</b>	<b>69,000 *</b>	<b>32.0</b>	<b>79.4</b>	<b>59,400 *</b>	<b>34.0</b>	<b>79.4</b>	<b>49,200 *</b>	<b>36.0</b>	<b>79.3</b>	<b>42,500 *</b>	<b>36.0</b>	<b>79.9</b>	<b>37,600 *</b>	
32.0	78.6	64,700 *	34.0	78.6	57,200 *	36.0	78.6	48,500 *	38.0	78.6	41,900 *	38.0	79.2	37,000 *	
<b>34.0</b>	<b>77.8</b>	<b>60,500 *</b>	<b>36.0</b>	<b>77.8</b>	<b>54,100 *</b>	<b>38.0</b>	<b>77.9</b>	<b>47,800 *</b>	<b>40.0</b>	<b>77.9</b>	<b>41,200 *</b>	<b>40.0</b>	<b>78.6</b>	<b>36,400 *</b>	
36.0	76.9	56,200	38.0	77.0	51,000 *	40.0	77.2	46,600 *	42.0	77.2	40,600 *	42.0	77.9	35,800 *	
<b>38.0</b>	<b>76.1</b>	<b>52,000 *</b>	<b>40.0</b>	<b>76.3</b>	<b>48,000 *</b>	<b>42.0</b>	<b>76.4</b>	<b>44,300 *</b>	<b>44.0</b>	<b>76.5</b>	<b>40,000 *</b>	<b>44.0</b>	<b>77.2</b>	<b>35,100 *</b>	
40.0	75.2	48,200	42.0	75.5	45,200	44.0	75.6	42,100 *	46.0	75.8	39,300 *	46.0	76.6	34,500 *	
<b>42.0</b>	<b>74.4</b>	<b>45,400 *</b>	<b>44.0</b>	<b>74.7</b>	<b>42,400 *</b>	<b>46.0</b>	<b>74.9</b>	<b>39,800 *</b>	<b>48.0</b>	<b>75.1</b>	<b>37,400 *</b>	<b>48.0</b>	<b>75.9</b>	<b>33,900 *</b>	
44.0	73.5	42,600	46.0	73.9	39,600	48.0	74.1	37,800	50.0	74.4	35,400 *	50.0	75.3	33,300 *	
<b>46.0</b>	<b>72.7</b>	<b>39,800 *</b>	<b>48.0</b>	<b>73.1</b>	<b>37,500 *</b>	<b>50.0</b>	<b>73.4</b>	<b>35,800 *</b>	<b>55.0</b>	<b>72.6</b>	<b>31,200 *</b>	<b>55.0</b>	<b>73.7</b>	<b>30,800 *</b>	
48.0	71.8	37,800	50.0	72.3	35,500	55.0	71.5	31,400	60.0	70.9	27,600	60.0	72.0	27,400	
<b>50.0</b>	<b>71.0</b>	<b>35,800 *</b>	<b>55.0</b>	<b>70.3</b>	<b>31,200 *</b>	<b>60.0</b>	<b>69.6</b>	<b>27,800 *</b>	<b>65.0</b>	<b>69.1</b>	<b>24,600 *</b>	<b>65.0</b>	<b>70.3</b>	<b>24,400 *</b>	
55.0	68.8	31,400	60.0	68.2	27,600	65.0	67.7	25,000	70.0	67.3	22,300	70.0	68.6	21,900	
<b>60.0</b>	<b>66.6</b>	<b>27,800 *</b>	<b>65.0</b>	<b>66.2</b>	<b>24,800 *</b>	<b>70.0</b>	<b>65.8</b>	<b>22,600 *</b>	<b>75.0</b>	<b>65.4</b>	<b>20,300 *</b>	<b>75.0</b>	<b>66.9</b>	<b>19,900 *</b>	
65.0	64.3	25,000	70.0	64.0	22,400	75.0	63.8	20,500	80.0	63.5	18,500	80.0	65.2	18,100	
<b>70.0</b>	<b>62.0</b>	<b>22,600 *</b>	<b>75.0</b>	<b>61.9</b>	<b>20,300 *</b>	<b>80.0</b>	<b>61.8</b>	<b>18,700 *</b>	<b>85.0</b>	<b>61.6</b>	<b>16,800 *</b>	<b>85.0</b>	<b>63.4</b>	<b>16,600 *</b>	
75.0	59.7	20,500	80.0	59.6	18,500	85.0	59.7	17,000	90.0	59.7	15,400	90.0	61.6	15,200	
<b>80.0</b>	<b>57.3</b>	<b>18,700 *</b>	<b>85.0</b>	<b>57.4</b>	<b>17,000 *</b>	<b>90.0</b>	<b>57.6</b>	<b>15,700 *</b>	<b>95.0</b>	<b>57.8</b>	<b>14,300 *</b>	<b>95.0</b>	<b>59.8</b>	<b>14,000 *</b>	
85.0	54.8	17,200	90.0	55.2	15,700	95.0	55.4	14,500	100.0	55.8	13,300	100.0	57.9	12,900	
<b>90.0</b>	<b>52.2</b>	<b>15,900 *</b>	<b>95.0</b>	<b>52.8</b>	<b>14,400 *</b>	<b>100.0</b>	<b>53.2</b>	<b>13,500 *</b>	<b>110.0</b>	<b>51.5</b>	<b>11,500 *</b>	<b>110.0</b>	<b>54.0</b>	<b>11,100 *</b>	
95.0	49.5	14,600	100.0	50.3	13,400	110.0	48.6	11,700	120.0	47.0	9,800	120.0	49.9	9,600	
<b>100.0</b>	<b>46.8</b>	<b>13,600 *</b>	<b>110.0</b>	<b>45.1</b>	<b>11,700 *</b>	<b>120.0</b>	<b>43.6</b>	<b>10,100 *</b>	<b>130.0</b>	<b>42.2</b>	<b>8,700 *</b>	<b>130.0</b>	<b>45.6</b>	<b>8,500 *</b>	
110.0	40.8	11,900	120.0	39.3	10,300	130.0	38.1	8,900	140.0	36.8	7,700	140.0	40.9	7,400	
<b>120.0</b>	<b>34.0</b>	<b>10,300 *</b>	<b>130.0</b>	<b>32.8</b>	<b>8,900 *</b>	<b>140.0</b>	<b>31.6</b>	<b>7,900 *</b>	<b>150.0</b>	<b>30.5</b>	<b>6,800 *</b>	<b>150.0</b>	<b>35.7</b>	<b>6,500 *</b>	
130.0	25.7	9,200	140.0	24.3	8,000	150.0	23.7	7,100	160.0	23.2	5,900	160.0	29.7	5,600	
<b>135.0</b>	<b>20.5</b>	<b>8,830 *</b>										<b>165.0</b>	<b>26.5</b>	<b>5,100 *</b>	
Reeves			4	Reeves			4	Reeves			2	Reeves			2
190' Boom			200' Boom												
Load Radius (ft)	Boom Angle (deg.)	360° Rated Load (lbs)	Load Radius (ft)	Boom Angle (deg.)	360° Rated Load (lbs)										
32.0	81.6	34,400 *	34.0	81.5	30,300 *										
<b>34.0</b>	<b>81.0</b>	<b>33,800 *</b>	<b>36.0</b>	<b>80.9</b>	<b>29,700 *</b>										
36.0	80.4	33,300 *	38.0	80.3	29,200 *										
<b>38.0</b>	<b>79.8</b>	<b>32,700 *</b>	<b>40.0</b>	<b>79.7</b>	<b>28,700 *</b>										
40.0	79.2	32,200 *	42.0	79.1	28,200 *										
<b>42.0</b>	<b>78.6</b>	<b>31,700 *</b>	<b>44.0</b>	<b>78.6</b>	<b>27,700 *</b>										
44.0	78.0	31,100 *	46.0	78.0	27,300 *										
<b>46.0</b>	<b>77.4</b>	<b>30,600 *</b>	<b>48.0</b>	<b>77.4</b>	<b>26,800 *</b>										
48.0	76.7	30,100 *	50.0	76.8	26,300 *										
<b>50.0</b>	<b>76.1</b>	<b>29,600 *</b>	<b>55.0</b>	<b>75.3</b>	<b>24,900 *</b>										
55.0	74.5	28,100 *	60.0	73.8	23,200 *										
<b>60.0</b>	<b>73.0</b>	<b>26,200 *</b>	<b>65.0</b>	<b>72.4</b>	<b>21,500 *</b>										
65.0	71.4	24,000 *	70.0	70.9	20,000 *										
<b>70.0</b>	<b>69.8</b>	<b>21,800 *</b>	<b>75.0</b>	<b>69.3</b>	<b>18,500 *</b>										
75.0	68.2	19,900	80.0	67.8	17,100 *										
<b>80.0</b>	<b>66.5</b>	<b>18,000 *</b>	<b>85.0</b>	<b>66.2</b>	<b>15,900 *</b>										
85.0	64.9	16,400	90.0	64.6	14,700										
<b>90.0</b>	<b>63.2</b>	<b>15,000 *</b>	<b>95.0</b>	<b>63.0</b>	<b>13,500 *</b>										
95.0	61.5	13,900	100.0	61.4	12,400										
<b>100.0</b>	<b>59.7</b>	<b>12,900 *</b>	<b>110.0</b>	<b>58.1</b>	<b>10,600 *</b>										
110.0	56.2	11,000	120.0	54.6	9,200										
<b>120.0</b>	<b>52.5</b>	<b>9,400 *</b>	<b>130.0</b>	<b>51.1</b>	<b>7,800 *</b>										
130.0	48.5	8,200	140.0	47.2	6,500										
<b>140.0</b>	<b>44.3</b>	<b>7,200 *</b>	<b>150.0</b>	<b>43.1</b>	<b>5,200 *</b>										
150.0	39.7	6,300	155.0	41.0	4,650 *										
<b>160.0</b>	<b>34.8</b>	<b>5,300 *</b>													
165.0	32.1	4,650													
Reeves			2	Reeves			2								

Note: Designed and rated to comply with ANSI Code B30.5

Capacities based on factors other than machine stability such as structural competence are shown by asterisk \* in the charts.

Refer to notes on page 20.

# CK1100G

## SPECIFICATIONS

### Fixed Jib Lift Capacity

Full Counterweight: 69,000 lbs    Carbody Weight: 31,800

80' Boom																							
30 ft Jib						40 ft Jib						50 ft Jib						60 ft Jib					
O set Angle (deg.)						O set Angle (deg.)						O set Angle (deg.)						O set Angle (deg.)					
10			30			10			30			10			30			10			30		
Load Radius (ft)	Boom Angle (deg.)	Rated Load (lbs)	Load Radius (ft)	Boom Angle (deg.)	Rated Load (lbs)	Load Radius (ft)	Boom Angle (deg.)	Rated Load (lbs)	Load Radius (ft)	Boom Angle (deg.)	Rated Load (lbs)	Load Radius (ft)	Boom Angle (deg.)	Rated Load (lbs)	Load Radius (ft)	Boom Angle (deg.)	Rated Load (lbs)	Load Radius (ft)	Boom Angle (deg.)	Rated Load (lbs)			
30.0	79.3	24,000*				34.0	79.3	24,000*				38.0	79.3	20,000*				40.0	79.8	18,000*			
<b>32.0</b>	<b>78.0</b>	<b>24,000*</b>				<b>36.0</b>	<b>78.3</b>	<b>24,000*</b>				<b>40.0</b>	<b>78.4</b>	<b>20,000*</b>				<b>45.0</b>	<b>77.7</b>	<b>18,000*</b>			
34.0	77.0	24,000*				38.0	77.4	24,000*				45.0	76.1	20,000*				50.0	75.6	17,850*			
<b>36.0</b>	<b>75.9</b>	<b>24,000*</b>				<b>40.0</b>	<b>76.4</b>	<b>24,000*</b>				<b>50.0</b>	<b>73.8</b>	<b>20,000*</b>				<b>55.0</b>	<b>73.3</b>	<b>16,180*</b>			
38.0	74.9	24,000*	38.0	79.6	21,000*	45.0	73.9	24,000*	45.0	79.7	15,360*	55.0	71.3	18,560*	55.0	78.0	11,080*	60.0	71.2	14,850*	60.0	78.7	8,950*
<b>40.0</b>	<b>73.8</b>	<b>24,000*</b>	<b>40.0</b>	<b>78.5</b>	<b>21,000*</b>	<b>50.0</b>	<b>71.4</b>	<b>24,000*</b>	<b>50.0</b>	<b>77.1</b>	<b>14,480*</b>	<b>60.0</b>	<b>68.9</b>	<b>17,080*</b>	<b>60.0</b>	<b>75.5</b>	<b>10,490*</b>	<b>65.0</b>	<b>69.0</b>	<b>13,730*</b>	<b>65.0</b>	<b>76.4</b>	<b>8,480*</b>
45.0	71.1	24,000*	45.0	75.7	20,700*	55.0	68.7	22,480*	55.0	74.3	13,640*	65.0	66.5	15,800*	65.0	73.0	9,980*	70.0	66.7	12,760*	70.0	74.1	8,060*
<b>50.0</b>	<b>68.3</b>	<b>24,000*</b>	<b>50.0</b>	<b>72.8</b>	<b>19,510*</b>	<b>60.0</b>	<b>66.1</b>	<b>20,700*</b>	<b>60.0</b>	<b>71.6</b>	<b>12,980*</b>	<b>70.0</b>	<b>64.0</b>	<b>14,720*</b>	<b>70.0</b>	<b>70.4</b>	<b>9,540*</b>	<b>75.0</b>	<b>64.3</b>	<b>11,860*</b>	<b>75.0</b>	<b>71.5</b>	<b>7,670*</b>
55.0	65.3	24,000*	55.0	69.7	18,380*	65.0	63.4	19,180*	65.0	68.8	12,360*	75.0	61.3	13,710*	75.0	67.6	9,100*	80.0	61.9	11,130*	80.0	69.0	7,340*
<b>60.0</b>	<b>62.4</b>	<b>24,000*</b>	<b>60.0</b>	<b>66.7</b>	<b>17,500*</b>	<b>70.0</b>	<b>60.6</b>	<b>17,870*</b>	<b>70.0</b>	<b>65.9</b>	<b>11,830*</b>	<b>80.0</b>	<b>58.7</b>	<b>12,870*</b>	<b>80.0</b>	<b>64.8</b>	<b>8,730*</b>	<b>85.0</b>	<b>59.5</b>	<b>10,470*</b>	<b>85.0</b>	<b>66.5</b>	<b>7,030*</b>
65.0	59.3	22,920	65.0	63.6	16,710*	75.0	57.6	16,660*	75.0	62.7	11,350*	85.0	56.0	12,140*	85.0	62.0	8,420*	90.0	57.0	9,870*	90.0	63.9	6,760*
<b>70.0</b>	<b>56.2</b>	<b>20,810</b>	<b>70.0</b>	<b>60.3</b>	<b>16,020*</b>	<b>80.0</b>	<b>54.6</b>	<b>15,670*</b>	<b>80.0</b>	<b>59.6</b>	<b>10,930*</b>	<b>90.0</b>	<b>53.2</b>	<b>11,500*</b>	<b>90.0</b>	<b>59.0</b>	<b>8,130*</b>	<b>95.0</b>	<b>54.2</b>	<b>9,320*</b>	<b>95.0</b>	<b>60.9</b>	<b>6,500*</b>
75.0	52.8	18,910	75.0	56.7	15,380*	85.0	51.5	14,810*	85.0	56.3	10,560*	95.0	50.0	10,890*	95.0	55.6	7,840*	100.0	51.5	8,860*	100.0	58.1	6,280*
<b>80.0</b>	<b>49.3</b>	<b>17,370</b>	<b>80.0</b>	<b>53.1</b>	<b>14,850*</b>	<b>90.0</b>	<b>48.3</b>	<b>14,040*</b>	<b>90.0</b>	<b>52.9</b>	<b>10,250*</b>	<b>100.0</b>	<b>46.9</b>	<b>10,360*</b>	<b>100.0</b>	<b>52.3</b>	<b>7,620*</b>	<b>105.0</b>	<b>48.7</b>	<b>8,440*</b>	<b>105.0</b>	<b>55.0</b>	<b>6,100*</b>
85.0	45.7	16,020				95.0	44.6	13,310*				105.0	43.6	9,890*				110.0	45.7	8,060*	110.0	51.8	5,930*
<b>90.0</b>	<b>41.8</b>	<b>14,850</b>				<b>100.0</b>	<b>40.8</b>	<b>12,690*</b>				<b>110.0</b>	<b>40.0</b>	<b>9,470*</b>				<b>115.0</b>	<b>42.3</b>	<b>7,690*</b>			
95.0	37.2	13,750				105.0	36.7	12,120				115.0	35.8	9,080*				120.0	38.8	7,380*			
<b>100.0</b>	<b>32.4</b>	<b>12,830</b>				<b>110.0</b>	<b>32.1</b>	<b>11,350*</b>										<b>125.0</b>	<b>35.1</b>	<b>7,120*</b>			
Reeves	1		Reeves	1		Reeves	1		Reeves	1		Reeves	1		Reeves	1		Reeves	1		Reeves	1	

90' Boom																							
30 ft Jib						40 ft Jib						50 ft Jib						60 ft Jib					
O set Angle (deg.)						O set Angle (deg.)						O set Angle (deg.)						O set Angle (deg.)					
10			30			10			30			10			30			10			30		
Load Radius (ft)	Boom Angle (deg.)	Rated Load (lbs)	Load Radius (ft)	Boom Angle (deg.)	Rated Load (lbs)	Load Radius (ft)	Boom Angle (deg.)	Rated Load (lbs)	Load Radius (ft)	Boom Angle (deg.)	Rated Load (lbs)	Load Radius (ft)	Boom Angle (deg.)	Rated Load (lbs)	Load Radius (ft)	Boom Angle (deg.)	Rated Load (lbs)	Load Radius (ft)	Boom Angle (deg.)	Rated Load (lbs)			
32.0	79.1	24,000*				36.0	79.3	24,000*				38.0	80.0	20,000*				45.0	78.6	18,000*			
<b>34.0</b>	<b>78.1</b>	<b>24,000*</b>				<b>38.0</b>	<b>78.4</b>	<b>24,000*</b>				<b>40.0</b>	<b>79.2</b>	<b>20,000*</b>				<b>50.0</b>	<b>76.6</b>	<b>18,000*</b>			
36.0	77.1	24,000*				40.0	77.5	24,000*				45.0	77.1	20,000*				55.0	74.5	16,970*			
<b>38.0</b>	<b>76.2</b>	<b>24,000*</b>				<b>45.0</b>	<b>75.2</b>	<b>24,000*</b>				<b>50.0</b>	<b>75.0</b>	<b>20,000*</b>				<b>60.0</b>	<b>72.5</b>	<b>15,630*</b>	<b>60.0</b>	<b>79.5</b>	<b>9,100*</b>
40.0	75.2	24,000*	40.0	79.5	21,000*	50.0	72.9	24,000*	50.0	78.2	14,810*	55.0	72.7	19,550*	55.0	78.9	11,300*	65.0	70.5	14,460*	65.0	77.4	8,660*
<b>45.0</b>	<b>72.7</b>	<b>24,000*</b>	<b>45.0</b>	<b>77.0</b>	<b>21,000*</b>	<b>55.0</b>	<b>70.4</b>	<b>23,890*</b>	<b>55.0</b>	<b>75.6</b>	<b>14,020*</b>	<b>60.0</b>	<b>70.5</b>	<b>18,000*</b>	<b>60.0</b>	<b>76.7</b>	<b>10,730*</b>	<b>70.0</b>	<b>68.4</b>	<b>13,470*</b>	<b>70.0</b>	<b>75.3</b>	<b>8,240*</b>
50.0	70.2	24,000*	50.0	74.4	20,100*	60.0	68.1	22,020*	60.0	73.2	13,330*	65.0	68.3	16,730*	65.0	74.4	10,250*	75.0	66.1	12,520*	75.0	72.9	7,870*
<b>55.0</b>	<b>67.5</b>	<b>24,000*</b>	<b>55.0</b>	<b>71.6</b>	<b>19,020*</b>	<b>65.0</b>	<b>65.6</b>	<b>20,410*</b>	<b>65.0</b>	<b>70.7</b>	<b>12,760*</b>	<b>70.0</b>	<b>66.1</b>	<b>15,580*</b>	<b>70.0</b>	<b>72.0</b>	<b>9,780*</b>	<b>80.0</b>	<b>64.0</b>	<b>11,770*</b>	<b>80.0</b>	<b>70.7</b>	<b>7,530*</b>
60.0	64.9	24,000*	60.0	68.9	18,120*	70.0	63.2	19,040*	70.0	68.1	12,230*	75.0	63.6	14,520*	75.0	69.5	9,360*	85.0	61.8	11,080*	85.0	68.4	7,230*
<b>65.0</b>	<b>62.2</b>	<b>22,660</b>	<b>65.0</b>	<b>66.1</b>	<b>17,320*</b>	<b>75.0</b>	<b>60.4</b>	<b>17,760*</b>	<b>75.0</b>	<b>65.3</b>	<b>11,720*</b>	<b>80.0</b>	<b>61.3</b>	<b>13,660*</b>	<b>80.0</b>	<b>67.0</b>	<b>8,990*</b>	<b>90.0</b>	<b>59.5</b>	<b>10,470*</b>	<b>90.0</b>	<b>66.0</b>	<b>6,960*</b>
70.0	59.4	20,540	70.0	63.3	16,620*	80.0	57.8	16,730*	80.0	62.5	11,300*	85.0	58.8	12,890*	85.0	64.5	8,680*	95.0	57.1	9,890*	95.0	63.4	6,700*
<b>75.0</b>	<b>56.4</b>	<b>18,620</b>	<b>75.0</b>	<b>60.2</b>	<b>15,960*</b>	<b>85.0</b>	<b>55.1</b>	<b>15,800*</b>	<b>85.0</b>	<b>59.7</b>	<b>10,930*</b>	<b>90.0</b>	<b>56.3</b>	<b>12,210*</b>	<b>90.0</b>	<b>61.8</b>	<b>8,370*</b>	<b>100.0</b>	<b>54.7</b>	<b>9,390*</b>	<b>100.0</b>	<b>60.9</b>	<b>6,480*</b>
80.0	53.5	17,080	80.0	57.1	15,430*	90.0	52.3	14,740	90.0	56.7	10,580*	95.0	53.6	11,570*	95.0	58.9	8,110*	105.0	52.2	8,950*	105.0	58.3	6,280*
<b>85.0</b>	<b>50.4</b>	<b>15,760</b>	<b>85.0</b>	<b>53.9</b>	<b>14,940*</b>	<b>95.0</b>	<b>49.1</b>	<b>13,620</b>	<b>95.0</b>	<b>53.4</b>	<b>10,270*</b>	<b>100.0</b>	<b>50.9</b>	<b>11,020*</b>	<b>100.0</b>	<b>56.1</b>	<b>7,870*</b>	<b>110.0</b>	<b>49.6</b>	<b>8,550*</b>	<b>110.0</b>	<b>55.5</b>	<b>6,100*</b>
90.0	47.1	14,570				100.0	46.0	12,690				105.0	48.0	10,530*				115.0	46.7	8,150*	115.0	52.4	5,930*
<b>95.0</b>	<b>43.4</b>	<b>13,470</b>				<b>105.0</b>	<b>42.7</b>	<b>11,860</b>				<b>110.0</b>	<b>45.1</b>	<b>10,070*</b>				<b>120.0</b>	<b>43.8</b>	<b>7,820*</b>			
100.0	39.7	12,540				110.0	39.1	11,080				115.0	41.7	9,650*				125.0	40.7	7,530*			
<b>105.0</b>	<b>35.6</b>	<b>11,700</b>				<b>115.0</b>	<b>35.0</b>	<b>10,360</b>				<b>120.0</b>	<b>38.2</b>	<b>9,300*</b>				<b>130.0</b>	<b>37.4</b>	<b>7,270*</b>			
												125.0	34.4	8,970*				135.0	33.8	7,010*			
Reeves	1		Reeves	1		Reeves	1		Reeves	1		Reeves	1		Reeves	1		Reeves	1		Reeves	1	

Note: Designed and rated to comply with ANSI Code B30.5  
 Capacities based on factors other than machine stability such as structural competence are shown by asterisk \* in the charts.  
 Refer to notes on page 20.



# CK1100G

## SPECIFICATIONS

### Fixed Jib Lift Capacity

Full Counterweight: 69,000 lbs Carbody Weight: 31,800

100' Boom																									
30 ft Jib						40 ft Jib						50 ft Jib						60 ft Jib							
O set Angle (deg.)						O set Angle (deg.)						O set Angle (deg.)						O set Angle (deg.)							
10			30			10			30			10			30			10			30				
Load Radius (ft)	Boom Angle (deg.)	Rated Load (lbs)	Load Radius (ft)	Boom Angle (deg.)	Rated Load (lbs)	Load Radius (ft)	Boom Angle (deg.)	Rated Load (lbs)	Load Radius (ft)	Boom Angle (deg.)	Rated Load (lbs)	Load Radius (ft)	Boom Angle (deg.)	Rated Load (lbs)	Load Radius (ft)	Boom Angle (deg.)	Rated Load (lbs)	Load Radius (ft)	Boom Angle (deg.)	Rated Load (lbs)	Load Radius (ft)	Boom Angle (deg.)	Rated Load (lbs)		
32.0	79.9	24,000*				36.0	80.0	24,000*				40.0	79.9	20,000*				45.0	79.3	18,000*					
34.0	79.0	24,000*				38.0	79.2	24,000*				45.0	78.0	20,000*				50.0	77.5	18,000*					
36.0	78.1	24,000*				40.0	78.4	24,000*				50.0	76.0	20,000*				55.0	75.5	17,720*					
38.0	77.2	24,000*				45.0	76.3	24,000*				55.0	73.9	20,000*	55.0	79.7	11,500*	60.0	73.7	16,350*					
40.0	76.4	24,000*				50.0	74.2	24,000*	50.0	79.1	15,100*	60.0	71.9	18,930*	60.0	77.7	10,950*	65.0	71.8	15,160*	65.0	78.3	8,810*		
45.0	74.1	24,000*	45.0	78.0	21,000*	55.0	71.9	24,000*	55.0	76.7	14,320*	65.0	69.9	17,590*	65.0	75.5	10,470*	70.0	69.9	14,130*	70.0	76.3	8,420*		
50.0	71.8	24,000*	50.0	75.7	20,650*	60.0	69.7	23,280*	60.0	74.5	13,660*	70.0	67.8	16,420*	70.0	73.4	10,030*	75.0	67.8	13,160*	75.0	74.2	8,040*		
55.0	69.3	24,000*	55.0	73.2	19,570*	65.0	67.5	21,620*	65.0	72.2	13,090*	75.0	65.6	15,340*	75.0	71.1	9,610*	80.0	65.8	12,360*	80.0	72.1	7,710*		
60.0	67.0	24,000*	60.0	70.7	18,690*	70.0	65.3	20,190*	70.0	69.9	12,560*	80.0	63.4	14,440*	80.0	68.8	9,230*	85.0	63.8	11,660*	85.0	70.0	7,420*		
65.0	64.5	22,440	65.0	68.2	17,900*	75.0	62.8	18,620	75.0	67.3	12,050*	85.0	61.2	13,640*	85.0	66.5	8,920*	90.0	61.7	11,040*	90.0	67.9	7,160*		
70.0	62.1	20,320	70.0	65.7	17,190*	80.0	60.4	17,060	80.0	64.9	11,640*	90.0	59.0	12,910*	90.0	64.2	8,610*	95.0	59.5	10,420*	95.0	65.5	6,900*		
75.0	59.4	18,400	75.0	62.9	16,510*	85.0	58.0	15,710	85.0	62.4	11,260*	95.0	56.5	12,230*	95.0	61.6	8,330*	100.0	57.3	9,920*	100.0	63.2	6,670*		
80.0	56.7	16,860	80.0	60.2	15,960*	90.0	55.5	14,500	90.0	59.8	10,910*	100.0	54.1	11,660*	100.0	59.1	8,090*	105.0	55.1	9,450*	105.0	60.9	6,450*		
85.0	54.0	15,520	85.0	57.4	15,450*	95.0	52.8	13,380	95.0	56.9	10,580*	105.0	51.6	11,150*	105.0	56.4	7,870*	110.0	52.7	9,030*	110.0	58.4	6,280*		
90.0	51.2	14,320	90.0	54.5	14,570	100.0	50.1	12,450	100.0	54.0	10,310*	110.0	49.0	10,670*	110.0	53.7	7,690*	115.0	50.2	8,610*	115.0	55.7	6,100*		
95.0	48.1	13,220	95.0	51.2	13,420	105.0	47.2	11,590				115.0	46.1	10,200*				120.0	47.7	8,280*	120.0	53.1	5,950*		
100.0	45.0	12,270				110.0	44.3	10,840				120.0	43.2	9,590				125.0	45.1	7,950*					
105.0	41.7	11,460				115.0	40.9	10,110				125.0	40.2	9,010				130.0	42.3	7,670*					
110.0	38.1	10,690				120.0	37.4	9,470				130.0	36.8	8,480				135.0	39.4	7,400*					
115.0	34.0	9,980				125.0	33.7	8,860*				135.0	33.2	7,800*				140.0	35.9	7,140*					
						145.0	32.4	6,810*																	
Reeves	1		Reeves	1		Reeves	1		Reeves	1		Reeves	1		Reeves	1		Reeves	1		Reeves	1		Reeves	1

110' Boom																									
30 ft Jib						40 ft Jib						50 ft Jib						60 ft Jib							
O set Angle (deg.)						O set Angle (deg.)						O set Angle (deg.)						O set Angle (deg.)							
10			30			10			30			10			30			10			30				
Load Radius (ft)	Boom Angle (deg.)	Rated Load (lbs)	Load Radius (ft)	Boom Angle (deg.)	Rated Load (lbs)	Load Radius (ft)	Boom Angle (deg.)	Rated Load (lbs)	Load Radius (ft)	Boom Angle (deg.)	Rated Load (lbs)	Load Radius (ft)	Boom Angle (deg.)	Rated Load (lbs)	Load Radius (ft)	Boom Angle (deg.)	Rated Load (lbs)	Load Radius (ft)	Boom Angle (deg.)	Rated Load (lbs)	Load Radius (ft)	Boom Angle (deg.)	Rated Load (lbs)		
34.0	79.8	24,000*				38.0	79.9	24,000*				45.0	78.8	20,000*				45.0	80.0	18,000*					
36.0	79.0	24,000*				40.0	79.2	24,000*				50.0	76.9	20,000*				50.0	78.3	18,000*					
38.0	78.2	24,000*				45.0	77.2	24,000*				55.0	75.0	20,000*				55.0	76.4	18,000*					
40.0	77.3	24,000*				50.0	75.3	24,000*	50.0	79.9	15,360*	60.0	73.1	19,810*	60.0	78.5	11,150*	60.0	74.7	17,040*					
45.0	75.3	24,000*	45.0	79.0	21,000*	55.0	73.2	24,000*	55.0	77.7	14,610*	65.0	71.2	18,430*	65.0	76.5	10,670*	65.0	72.9	15,820*	65.0	79.1	8,970*		
50.0	73.2	24,000*	50.0	76.8	21,000*	60.0	71.2	24,000*	60.0	75.6	13,970*	70.0	69.3	17,230*	70.0	74.6	10,250*	70.0	71.1	14,770*	70.0	77.2	8,570*		
55.0	70.9	24,000*	55.0	74.5	20,100*	65.0	69.1	22,500	65.0	73.5	13,400*	75.0	67.2	16,110*	75.0	72.4	9,830*	75.0	69.2	13,800*	75.0	75.2	8,200*		
60.0	68.7	24,000*	60.0	72.2	19,220*	70.0	67.1	20,370	70.0	71.4	12,870*	80.0	65.2	15,160*	80.0	70.4	9,470*	80.0	67.3	12,960*	80.0	73.3	7,890*		
65.0	66.5	22,260	65.0	70.0	18,430*	75.0	64.8	18,450	75.0	69.1	12,380*	85.0	63.2	14,350*	85.0	68.3	9,140*	85.0	65.5	12,230*	85.0	71.4	7,580*		
70.0	64.3	20,150	70.0	67.7	17,700*	80.0	62.7	16,880	80.0	66.9	11,940*	90.0	61.2	13,600*	90.0	66.1	8,840*	90.0	63.6	11,590*	90.0	69.4	7,310*		
75.0	61.8	18,230	75.0	65.1	17,040*	85.0	60.5	15,520	85.0	64.6	11,570*	95.0	58.9	12,890*	95.0	63.8	8,550*	95.0	61.5	10,950*	95.0	67.2	7,050*		
80.0	59.4	16,680	80.0	62.7	16,460*	90.0	58.2	14,320	90.0	62.2	11,220*	100.0	56.7	12,300*	100.0	61.5	8,310*	100.0	59.5	10,420*	100.0	65.2	6,830*		
85.0	57.0	15,340	85.0	60.2	15,650	95.0	55.7	13,200	95.0	59.7	10,890*	105.0	54.5	11,530	105.0	59.2	8,090*	105.0	57.5	9,940*	105.0	63.0	6,630*		
90.0	54.5	14,150	90.0	57.6	14,440	100.0	53.3	12,250	100.0	57.1	10,600*	110.0	52.2	10,780	110.0	56.7	7,890*	110.0	55.4	9,500*	110.0	60.8	6,430*		
95.0	51.8	13,020	95.0	54.8	13,270	105.0	50.8	11,410	105.0	54.5	10,330*	115.0	49.6	10,030	115.0	54.0	7,690*	115.0	53.1	9,080*	115.0	58.4	6,260*		
100.0	49.1	12,100	100.0	52.0	12,320	110.0	48.2	10,640	110.0	51.8	10,110*	120.0	47.1	9,390				120.0	50.9	8,700*	120.0	56.1	6,100*		
105.0	46.3	11,260				115.0	45.3	9,920				125.0	44.5	8,810				125.0	48.6	8,370*	125.0	53.6	5,970*		
110.0	43.3	10,510				120.0	42.5	9,300				130.0	41.8	8,280				130.0	46.2	8,060*					
115.0	39.9	9,780				125.0	39.4	8,730				135.0	38.8	7,800				135.0	43.6	7,780*					
120.0	36.5	9,170				130.0	36.1	8,200				140.0	35.4	7,250*				140.0	40.8	7,380					
125.0	32.7	8,420*				135.0	32.5	7,420*										145.0	37.9	6,960					
																			150.0	34.8	6,370*				
Reeves	1		Reeves	1		Reeves	1		Reeves	1		Reeves	1		Reeves	1		Reeves	1		Reeves	1		Reeves	1

Note: Designed and rated to comply with ANSI Code B30.5

Capacities based on factors other than machine stability such as structural competence are shown by asterisk \* in the charts. Refer to notes on page 20.

# CK1100G

## SPECIFICATIONS

### Fixed Jib Lift Capacity

Full Counterweight: 69,000 lbs Carbody Weight: 31,800

120' Boom																									
30 ft Jib						40 ft Jib						50 ft Jib						60 ft Jib							
O set Angle (deg.)						O set Angle (deg.)						O set Angle (deg.)						O set Angle (deg.)							
10			30			10			30			10			30			10			30				
Load Radius (ft)	Boom Angle (deg.)	Rated Load (lbs)	Load Radius (ft)	Boom Angle (deg.)	Rated Load (lbs)	Load Radius (ft)	Boom Angle (deg.)	Rated Load (lbs)	Load Radius (ft)	Boom Angle (deg.)	Rated Load (lbs)	Load Radius (ft)	Boom Angle (deg.)	Rated Load (lbs)	Load Radius (ft)	Boom Angle (deg.)	Rated Load (lbs)	Load Radius (ft)	Boom Angle (deg.)	Rated Load (lbs)	Load Radius (ft)	Boom Angle (deg.)	Rated Load (lbs)		
36.0	79.7	24,000*				40.0	79.9	24,000*				45.0	79.5	20,000*				50.0	78.9	18,000*					
<b>38.0</b>	<b>79.0</b>	<b>24,000*</b>				<b>45.0</b>	<b>78.1</b>	<b>24,000*</b>				<b>50.0</b>	<b>77.7</b>	<b>20,000*</b>				<b>55.0</b>	<b>77.2</b>	<b>18,000*</b>					
40.0	78.2	24,000*				50.0	76.2	24,000*				55.0	75.9	20,000*				60.0	75.5	17,720*					
<b>45.0</b>	<b>76.3</b>	<b>24,000*</b>	<b>45.0</b>	<b>79.7</b>	<b>21,000*</b>	<b>55.0</b>	<b>74.3</b>	<b>24,000*</b>	<b>55.0</b>	<b>78.5</b>	<b>14,880*</b>	<b>60.0</b>	<b>74.2</b>	<b>20,000*</b>	<b>60.0</b>	<b>79.2</b>	<b>11,330*</b>	<b>65.0</b>	<b>73.9</b>	<b>16,460*</b>	<b>65.0</b>	<b>79.7</b>	<b>9,080*</b>		
50.0	74.3	24,000*	50.0	77.7	21,000*	60.0	72.4	24,000*	60.0	76.6	14,240*	65.0	72.4	19,240*	65.0	77.4	10,860*	70.0	72.2	15,380*	70.0	78.0	8,700*		
<b>55.0</b>	<b>72.2</b>	<b>24,000*</b>	<b>55.0</b>	<b>75.6</b>	<b>20,560*</b>	<b>65.0</b>	<b>70.5</b>	<b>22,240*</b>	<b>65.0</b>	<b>74.7</b>	<b>13,690*</b>	<b>70.0</b>	<b>70.6</b>	<b>18,010*</b>	<b>70.0</b>	<b>75.6</b>	<b>10,420*</b>	<b>75.0</b>	<b>70.4</b>	<b>14,390*</b>	<b>75.0</b>	<b>76.1</b>	<b>8,350*</b>		
60.0	70.2	24,000*	60.0	73.5	19,680*	70.0	68.6	20,100	70.0	72.7	13,160*	75.0	68.7	16,840*	75.0	73.6	10,030*	80.0	68.7	13,550*	80.0	74.4	8,040*		
<b>65.0</b>	<b>68.2</b>	<b>21,970</b>	<b>65.0</b>	<b>71.4</b>	<b>18,910*</b>	<b>75.0</b>	<b>66.5</b>	<b>18,160</b>	<b>75.0</b>	<b>70.6</b>	<b>12,670*</b>	<b>80.0</b>	<b>66.8</b>	<b>15,890*</b>	<b>80.0</b>	<b>71.7</b>	<b>9,670*</b>	<b>85.0</b>	<b>67.0</b>	<b>12,780*</b>	<b>85.0</b>	<b>72.6</b>	<b>7,730*</b>		
70.0	66.1	19,860	70.0	69.3	18,180*	80.0	64.5	16,620	80.0	68.5	12,250*	85.0	65.0	15,030*	85.0	69.7	9,340*	90.0	65.2	12,120*	90.0	70.7	7,470*		
<b>75.0</b>	<b>63.9</b>	<b>17,940</b>	<b>75.0</b>	<b>67.0</b>	<b>17,500*</b>	<b>85.0</b>	<b>62.5</b>	<b>15,250</b>	<b>85.0</b>	<b>66.4</b>	<b>11,860*</b>	<b>90.0</b>	<b>63.1</b>	<b>14,190</b>	<b>90.0</b>	<b>67.8</b>	<b>9,060*</b>	<b>95.0</b>	<b>63.3</b>	<b>11,480*</b>	<b>95.0</b>	<b>68.7</b>	<b>7,230*</b>		
80.0	61.7	16,400	80.0	64.8	16,790	90.0	60.5	14,040	90.0	64.3	11,500*	95.0	61.0	13,050	95.0	65.6	8,770*	100.0	61.5	10,930*	100.0	66.8	7,010*		
<b>85.0</b>	<b>59.5</b>	<b>15,050</b>	<b>85.0</b>	<b>62.6</b>	<b>15,410</b>	<b>95.0</b>	<b>58.2</b>	<b>12,910</b>	<b>95.0</b>	<b>62.0</b>	<b>11,170*</b>	<b>100.0</b>	<b>59.0</b>	<b>12,100</b>	<b>100.0</b>	<b>63.6</b>	<b>8,500*</b>	<b>105.0</b>	<b>59.6</b>	<b>10,420*</b>	<b>105.0</b>	<b>64.9</b>	<b>6,790*</b>		
90.0	57.3	13,860	90.0	60.2	14,170	100.0	56.0	11,970	100.0	59.7	10,860*	105.0	57.0	11,260	105.0	61.4	8,280*	110.0	57.7	9,960*	110.0	62.9	6,610*		
<b>95.0</b>	<b>54.8</b>	<b>12,740</b>	<b>95.0</b>	<b>57.7</b>	<b>13,020</b>	<b>105.0</b>	<b>53.8</b>	<b>11,130</b>	<b>105.0</b>	<b>57.4</b>	<b>10,600*</b>	<b>110.0</b>	<b>54.9</b>	<b>10,490</b>	<b>110.0</b>	<b>59.3</b>	<b>8,260*</b>	<b>115.0</b>	<b>55.6</b>	<b>9,520*</b>	<b>115.0</b>	<b>60.7</b>	<b>6,410*</b>		
100.0	52.4	11,790	100.0	55.2	12,050	110.0	51.5	10,360	110.0	55.0	10,360*	115.0	52.6	9,740	115.0	56.8	7,870*	120.0	53.6	9,140*	120.0	58.6	6,260*		
<b>105.0</b>	<b>49.9</b>	<b>10,950</b>	<b>105.0</b>	<b>52.6</b>	<b>11,170</b>	<b>115.0</b>	<b>48.9</b>	<b>9,630</b>	<b>115.0</b>	<b>52.3</b>	<b>9,870</b>	<b>120.0</b>	<b>50.4</b>	<b>9,100</b>	<b>120.0</b>	<b>54.5</b>	<b>7,690*</b>	<b>125.0</b>	<b>51.5</b>	<b>8,610</b>	<b>125.0</b>	<b>56.4</b>	<b>6,100*</b>		
110.0	47.3	10,200				120.0	46.5	8,990				125.0	48.1	8,530	125.0	52.1	7,530*	130.0	49.3	8,060	130.0	54.1	5,970*		
<b>115.0</b>	<b>44.4</b>	<b>9,470</b>				<b>125.0</b>	<b>43.8</b>	<b>8,420</b>				<b>130.0</b>	<b>45.6</b>	<b>8,000</b>				<b>135.0</b>	<b>47.1</b>	<b>7,580</b>	<b>135.0</b>	<b>51.7</b>	<b>5,860*</b>		
120.0	41.6	8,860				130.0	41.1	7,890				135.0	43.1	7,510				140.0	44.6	7,090					
<b>125.0</b>	<b>38.5</b>	<b>8,280</b>				<b>135.0</b>	<b>38.1</b>	<b>7,420</b>				<b>140.0</b>	<b>40.3</b>	<b>7,030</b>				<b>145.0</b>	<b>42.2</b>	<b>6,670</b>					
130.0	35.2	7,690*				140.0	34.7	6,700*				145.0	37.4	6,540*				150.0	39.6	6,300					
<b>135.0</b>	<b>31.6</b>	<b>6,830*</b>										<b>150.0</b>	<b>34.3</b>	<b>5,880*</b>				<b>155.0</b>	<b>36.8</b>	<b>5,730*</b>					
																			160.0	33.6	5,090*				
Reeves	1		Reeves	1		Reeves	1		Reeves	1		Reeves	1		Reeves	1		Reeves	1		Reeves	1		Reeves	1

130' Boom																								
30 ft Jib						40 ft Jib						50 ft Jib						60 ft Jib						
O set Angle (deg.)						O set Angle (deg.)						O set Angle (deg.)						O set Angle (deg.)						
10			30			10			30			10			30			10			30			
Load Radius (ft)	Boom Angle (deg.)	Rated Load (lbs)	Load Radius (ft)	Boom Angle (deg.)	Rated Load (lbs)	Load Radius (ft)	Boom Angle (deg.)	Rated Load (lbs)	Load Radius (ft)	Boom Angle (deg.)	Rated Load (lbs)	Load Radius (ft)	Boom Angle (deg.)	Rated Load (lbs)	Load Radius (ft)	Boom Angle (deg.)	Rated Load (lbs)	Load Radius (ft)	Boom Angle (deg.)	Rated Load (lbs)	Load Radius (ft)	Boom Angle (deg.)	Rated Load (lbs)	
38.0	79.7	24,000*				45.0	78.8	24,000*				45.0	80.0	20,000*				50.0	79.5	18,000*				
<b>40.0</b>	<b>79.0</b>	<b>24,000*</b>				<b>50.0</b>	<b>77.1</b>	<b>24,000*</b>				<b>50.0</b>	<b>78.4</b>	<b>20,000*</b>				<b>55.0</b>	<b>77.9</b>	<b>18,000*</b>				
45.0	77.1	24,000*				55.0	75.2	24,000*	55.0	79.3	15,100*	55.0	76.7	20,000*				60.0	76.3	18,000*				
<b>50.0</b>	<b>75.3</b>	<b>24,000*</b>	<b>50.0</b>	<b>78.5</b>	<b>21,000*</b>	<b>60.0</b>	<b>73.5</b>	<b>24,000*</b>	<b>60.0</b>	<b>77.5</b>	<b>14,500*</b>	<b>60.0</b>	<b>75.1</b>	<b>20,000*</b>	<b>60.0</b>	<b>79.9</b>	<b>11,480*</b>	<b>65.0</b>	<b>74.8</b>	<b>17,100*</b>				
55.0	73.4	24,000*	55.0	76.5	20,980*	65.0	71.7	22,000	65.0	75.7	13,930*	65.0	73.4	20,000*	65.0	78.2	11,020*	70.0	73.2	16,000*	70.0	78.7	8,840*	
<b>60.0</b>	<b>71.5</b>	<b>24,000*</b>	<b>60.0</b>	<b>74.6</b>	<b>20,120*</b>	<b>70.0</b>	<b>69.9</b>	<b>19,860</b>	<b>70.0</b>	<b>73.8</b>	<b>13,420*</b>	<b>70.0</b>	<b>71.7</b>	<b>18,760*</b>	<b>70.0</b>	<b>76.5</b>	<b>10,620*</b>	<b>75.0</b>	<b>71.5</b>	<b>14,960*</b>	<b>75.0</b>	<b>76.9</b>	<b>8,480*</b>	
65.0	69.6	21,730	65.0	72.7	19,350*	75.0	68.0	17,920	75.0	71.8	12,940*	75.0	69.9	17,570*	75.0	74.6	10,200*	80.0	69.9	14,100*	80.0	75.3	8,170*	
<b>70.0</b>	<b>67.7</b>	<b>19,620</b>	<b>70.0</b>	<b>70.7</b>	<b>18,650*</b>	<b>80.0</b>	<b>66.2</b>	<b>16,350</b>	<b>80.0</b>	<b>69.9</b>	<b>12,520*</b>	<b>80.0</b>	<b>68.2</b>	<b>16,530</b>	<b>80.0</b>	<b>72.8</b>	<b>9,850*</b>	<b>85.0</b>	<b>68.3</b>	<b>13,330*</b>	<b>85.0</b>	<b>73.6</b>	<b>7,890*</b>	
75.0	65.6	17,680	75.0	68.6	17,960*	85.0	64.3	14,990	85.0	68.0	12,140*	85.0	66.5	15,160	85.0	71.0	9,540*	90.0	66.6	12,630*	90.0	71.9	7,620*	
<b>80.0</b>	<b>63.7</b>	<b>16,130</b>	<b>80.0</b>	<b>66.6</b>	<b>16,600</b>	<b>90.0</b>	<b>62.4</b>	<b>13,800</b>	<b>90.0</b>	<b>66.1</b>	<b>11,770*</b>	<b>90.0</b>	<b>64.7</b>	<b>13,950</b>	<b>90.0</b>	<b>69.2</b>	<b>9,230*</b>	<b>95.0</b>	<b>64.8</b>	<b>11,970*</b>	<b>95.0</b>	<b>70.0</b>	<b>7,360*</b>	
85.0	61.6	14,790	85.0	64.5	15,180	95.0	60.3	12,650	95.0	63.9	11,440*	95.0	62.8	12,800	95.0	67.2	8,950*	100.0	63.1	11,410*	100.0	68.3	7,140*	
<b>90.0</b>	<b>59.6</b>	<b>13,600</b>	<b>90.0</b>	<b>62.4</b>	<b>13,950</b>	<b>100.0</b>	<b>58.3</b>	<b>11,700</b>	<b>100.0</b>	<b>61.9</b>	<b>11,130*</b>	<b>100.0</b>	<b>61.0</b>	<b>11,860</b>	<b>100.0</b>	<b>65.3</b>	<b>8,700*</b>	<b>105.0</b>	<b>61.4</b>	<b>10,890*</b>	<b>105.0</b>	<b>66.5</b>	<b>6,940*</b>	
95.0	57.3	12,470	95.0	60.1	12,780	105.0	56.3	10,860	105.0	59.8	10,860*	105.0	59.1	11,000	105.0	63.4	8,480*	110.0	59.6	10,310	110.0	64.6	6,740*	
<b>100.0</b>	<b>55.2</b>	<b>11,530</b>	<b>100.0</b>	<b>57.9</b>	<b>11,810</b>	<b>110.0</b>	<b>54.2</b>	<b>10,090</b>	<b>110.0</b>	<b>57.6</b>	<b>10,420</b>	<b>110.0</b>	<b>57.2</b>	<b>10,220</b>	<b>110.0</b>	<b>61.4</b>	<b>8,260*</b>	<b>115.0</b>	<b>57.7</b>	<b>9,560</b>	<b>115.0</b>	<b>62.6</b>	<b>6,560*</b>	
105.0	52.9	10,690	105.0	55.6	10,950	115.0	51.9	9,360	115.0	55.2	9,650	115.0	55.1	9,470	115.0	59.2	8,040*	120.0	55.9	8,920	120.0	60.7	6,390*	
<b>110.0</b>	<b>50.6</b>	<b>9,940</b>	<b>110.0</b>	<b>53.2</b>	<b>10,160</b>	<b>120.0</b>	<b>49.7</b>	<b>8,730</b>	<b>120.0</b>	<b>52.9</b>	<b>8,990</b>	<b>120.0</b>	<b>53.1</b>	<b>8,840</b>	<b>120.0</b>	<b>57.1</b>	<b>7,870*</b>	<b>125.0</b>	<b>54.0</b>	<b>8,350</b>	<b>125.0</b>	<b>58.7</b>	<b>6,230*</b>	
115.0	48.1	9,210				125.0	47.4	8,150				125.0	51.0	8,260	125.0	54.9	7,710*	130.0	52.0	7,820	130.0	56.6	6,100*	
<b>120.0</b>	<b>45.6</b>	<b>8,570</b>				<b>130.0</b>	<b>45.0</b>	<b>7,620</b>				<b>130.0</b>	<b>48.8</b>	<b>7,730</b>	<b>130.0</b>	<b>52.6</b>	<b>7,560*</b>	<b>135.0</b>	<b>50.0</b>	<b>7,310</b>	<b>135.0</b>	<b>54.5</b>	<b>5,970*</b>	
125.0	43.0	8,020				135.0	42.5	7,140				135.0	46.6	7,250				140.0	47.8	6,830	140.0	52.2	5,860*	
<b>130.0</b>	<b>40.2</b>	<b>7,490</b>				<b>140.0</b>	<b>39.6</b>	<b>6,670</b>				<b>140.0</b>	<b>44.1</b>	<b>6,760</b>				<b>145.0</b>	<b>45.6</b>	<b>6,410</b>				
135.0																								

# CK1100G

## SPECIFICATIONS

### Fixed Jib Lift Capacity

Full Counterweight: 69,000 lbs Carbody Weight: 31,800

140' Boom																							
30 ft Jib						40 ft Jib						50 ft Jib						60 ft Jib					
O set Angle (deg.)						O set Angle (deg.)						O set Angle (deg.)						O set Angle (deg.)					
10			30			10			30			10			30			10			30		
Load Radius (ft)	Boom Angle (deg.)	Rated Load (lbs)	Load Radius (ft)	Boom Angle (deg.)	Rated Load (lbs)	Load Radius (ft)	Boom Angle (deg.)	Rated Load (lbs)	Load Radius (ft)	Boom Angle (deg.)	Rated Load (lbs)	Load Radius (ft)	Boom Angle (deg.)	Rated Load (lbs)	Load Radius (ft)	Boom Angle (deg.)	Rated Load (lbs)	Load Radius (ft)	Boom Angle (deg.)	Rated Load (lbs)	Load Radius (ft)	Boom Angle (deg.)	Rated Load (lbs)
40.0	79.6	24,000*				45.0	79.4	24,000*				50.0	79.1	20,000*				55.0	78.5	18,000*			
45.0	77.9	24,000*				50.0	77.8	24,000*				55.0	77.4	20,000*				60.0	77.0	18,000*			
50.0	76.2	24,000*	50.0	79.2	21,000*	55.0	76.1	24,000*	55.0	79.9	15,320*	60.0	75.9	20,000*				65.0	75.6	17,700*			
55.0	74.4	24,000*	55.0	77.4	21,000*	60.0	74.4	24,000*	60.0	78.2	14,720*	65.0	74.3	20,000*	65.0	78.8	11,170*	70.0	74.1	16,570*	70.0	79.3	8,950*
60.0	72.6	23,980	60.0	75.6	20,540*	65.0	72.8	21,730	65.0	76.5	14,170*	70.0	72.8	19,480*	70.0	77.2	10,780*	75.0	72.5	15,520*	75.0	77.7	8,590*
65.0	70.9	21,450	65.0	73.8	19,770*	70.0	71.1	19,590	70.0	74.8	13,690*	75.0	71.1	17,850	75.0	75.5	10,380*	80.0	71.0	14,630*	80.0	76.1	8,310*
70.0	69.1	19,330	70.0	72.0	19,060*	75.0	69.3	17,650	75.0	72.9	13,180*	80.0	69.4	16,260	80.0	73.8	10,030*	85.0	69.4	13,840*	85.0	74.5	8,020*
75.0	67.2	17,390	75.0	70.0	17,940	80.0	67.6	16,090	80.0	71.2	12,760*	85.0	67.8	14,880	85.0	72.1	9,720*	90.0	67.9	13,130*	90.0	72.9	7,760*
80.0	65.3	15,850	80.0	68.1	16,330	85.0	65.9	14,720	85.0	69.4	12,380*	90.0	66.2	13,660	90.0	70.4	9,430*	95.0	66.2	12,450*	95.0	71.2	7,510*
85.0	63.5	14,480	85.0	66.2	14,940	90.0	64.1	13,510	90.0	67.6	12,030*	95.0	64.4	12,520	95.0	68.6	9,120*	100.0	64.6	11,680	100.0	69.5	7,270*
90.0	61.6	13,290	90.0	64.3	13,690	95.0	62.2	12,360	95.0	65.6	11,680*	100.0	62.7	11,570	100.0	66.8	8,880*	105.0	63.0	10,820	105.0	67.8	7,070*
95.0	59.5	12,160	95.0	62.2	12,540	100.0	60.3	11,410	100.0	63.7	11,370*	105.0	60.9	10,710	105.0	65.0	8,660*	110.0	61.4	10,050	110.0	66.1	6,870*
100.0	57.5	11,220	100.0	60.1	11,550	105.0	58.5	10,580	105.0	61.8	10,970	110.0	59.2	9,940	110.0	63.2	8,440*	115.0	59.6	9,300	115.0	64.3	6,700*
105.0	55.5	10,380	105.0	58.1	10,690	110.0	56.6	9,810	110.0	59.8	10,180	115.0	57.3	9,190	115.0	61.2	8,220*	120.0	57.9	8,660	120.0	62.5	6,520*
110.0	53.4	9,630	110.0	55.9	9,890	115.0	54.5	9,060	115.0	57.6	9,410	120.0	55.4	8,550	120.0	59.3	8,040*	125.0	56.1	8,060	125.0	60.7	6,370*
115.0	51.1	8,900	115.0	53.5	9,120	120.0	52.5	8,420	120.0	55.5	8,730	125.0	53.5	7,980	125.0	57.3	7,870*	130.0	54.3	7,530	130.0	58.8	6,230*
120.0	48.9	8,260	120.0	51.3	8,480	125.0	50.4	7,840	125.0	53.4	8,130	130.0	51.6	7,450	130.0	55.3	7,710*	135.0	52.5	7,030	135.0	56.9	6,100*
125.0	46.6	7,690				130.0	48.2	7,310				135.0	49.5	6,940	135.0	53.1	7,250	140.0	50.5	6,540	140.0	54.7	5,970*
130.0	44.2	7,180				135.0	46.0	6,830				140.0	47.3	6,450				145.0	48.5	6,120	145.0	52.7	5,860*
135.0	41.7	6,700				140.0	43.5	6,370				145.0	45.1	6,040				150.0	46.5	5,730			
140.0	38.8	6,060*				145.0	41.1	5,880*				150.0	42.9	5,640*				155.0	44.4	5,350*			
145.0	36.0	5,400*				150.0	38.5	5,290*				155.0	40.5	5,090*				160.0	42.0	4,820*			
150.0	32.9	4,760*				155.0	35.7	4,690*				160.0	37.8	4,540*				165.0	39.7	4,340*			
						160.0	32.5	4,070*				170.0	32.2	3,500*				175.0	34.7	3,410*			
Reeves	1		Reeves	1		Reeves	1		Reeves	1		Reeves	1		Reeves	1		Reeves	1		Reeves	1	

150' Boom																							
30 ft Jib						40 ft Jib						50 ft Jib						60 ft Jib					
O set Angle (deg.)						O set Angle (deg.)						O set Angle (deg.)						O set Angle (deg.)					
10			30			10			30			10			30			10			30		
Load Radius (ft)	Boom Angle (deg.)	Rated Load (lbs)	Load Radius (ft)	Boom Angle (deg.)	Rated Load (lbs)	Load Radius (ft)	Boom Angle (deg.)	Rated Load (lbs)	Load Radius (ft)	Boom Angle (deg.)	Rated Load (lbs)	Load Radius (ft)	Boom Angle (deg.)	Rated Load (lbs)	Load Radius (ft)	Boom Angle (deg.)	Rated Load (lbs)	Load Radius (ft)	Boom Angle (deg.)	Rated Load (lbs)	Load Radius (ft)	Boom Angle (deg.)	Rated Load (lbs)
45.0	78.6	24,000*				45.0	80.0	24,000*				50.0	79.6	20,000*				55.0	79.1	18,000*			
50.0	77.0	24,000*	50.0	79.9	21,000*	50.0	78.5	24,000*				55.0	78.1	20,000*				60.0	77.7	18,000*			
55.0	75.3	24,000*	55.0	78.1	21,000*	55.0	76.8	24,000*				60.0	76.6	20,000*				65.0	76.3	18,000*			
60.0	73.6	23,800	60.0	76.4	20,890*	60.0	75.3	24,000*	60.0	78.9	14,920*	65.0	75.1	20,000*	65.0	79.4	11,330*	70.0	74.9	17,120*	70.0	79.9	9,060*
65.0	72.0	21,270	65.0	74.8	20,150*	65.0	73.7	21,580	65.0	77.3	14,390*	70.0	73.7	19,640	70.0	77.9	10,930*	75.0	73.4	16,040*	75.0	78.3	8,700*
70.0	70.3	19,150	70.0	73.1	19,440*	70.0	72.1	19,420	70.0	75.7	13,910*	75.0	72.1	17,680	75.0	76.3	10,530*	80.0	71.9	15,160*	80.0	76.8	8,420*
75.0	68.5	17,210	75.0	71.2	17,810	75.0	70.5	17,480	75.0	73.9	13,420*	80.0	70.5	16,090	80.0	74.7	10,200*	85.0	70.5	14,350*	85.0	75.3	8,130*
80.0	66.8	15,670	80.0	69.5	16,200	80.0	68.8	15,890	80.0	72.3	13,000*	85.0	69.0	14,700	85.0	73.1	9,870*	90.0	69.0	13,620	90.0	73.8	7,890*
85.0	65.1	14,300	85.0	67.7	14,790	85.0	67.2	14,520	85.0	70.6	12,630*	90.0	67.5	13,490	90.0	71.5	9,590*	95.0	67.4	12,450	95.0	72.2	7,620*
90.0	63.3	13,110	90.0	65.9	13,530	90.0	65.6	13,310	90.0	68.9	12,270*	95.0	65.8	12,340	95.0	69.8	9,300*	100.0	65.9	11,500	100.0	70.6	7,400*
95.0	61.4	11,990	95.0	63.9	12,360	95.0	63.8	12,190	95.0	67.1	11,920*	100.0	64.2	11,390	100.0	68.2	9,060*	105.0	64.4	10,640	105.0	69.1	7,200*
100.0	59.6	11,040	100.0	62.1	11,390	100.0	62.1	11,240	100.0	65.3	11,610*	105.0	62.6	10,530	105.0	66.5	8,810*	110.0	62.9	9,850	110.0	67.5	7,010*
105.0	57.7	10,200	105.0	60.2	10,510	105.0	60.3	10,380	105.0	63.5	10,820	110.0	60.9	9,760	110.0	64.8	8,590*	115.0	61.2	9,100	115.0	65.7	6,830*
110.0	55.8	9,430	110.0	58.2	9,720	110.0	58.6	9,610	110.0	61.7	10,030	115.0	59.1	9,010	115.0	62.9	8,390*	120.0	59.6	8,460	120.0	64.1	6,650*
115.0	53.7	8,700	115.0	56.1	8,970	115.0	56.7	8,860	115.0	59.7	9,230	120.0	57.4	8,370	120.0	61.2	8,200*	125.0	58.0	7,870	125.0	62.4	6,500*
120.0	51.7	8,090	120.0	54.0	8,310	120.0	54.8	8,240	120.0	57.8	8,570	125.0	55.7	7,780	125.0	59.3	8,020*	130.0	56.3	7,340	130.0	60.7	6,370*
125.0	49.6	7,510	125.0	51.8	7,710	125.0	52.9	7,670	125.0	55.8	7,950	130.0	53.9	7,250	130.0	57.5	7,620	135.0	54.6	6,830	135.0	58.9	6,210*
130.0	47.5	6,980				130.0	51.0	7,140	130.0	53.8	7,400	135.0	52.0	6,740	135.0	55.6	7,090	140.0	52.8	6,340	140.0	57.0	6,080*
135.0	45.3	6,500				135.0	49.0	6,630				140.0	50.0	6,260	140.0	53.4	6,590	145.0	51.0	5,930	145.0	55.1	5,970*
140.0	42.8	6,010*				140.0	46.7	6,170				145.0	48.1	5,840				150.0	49.2	5,530			
145.0	40.3	5,420*				145.0	44.6	5,750				150.0	46.0	5,460				155.0	47.3	5,150*			
150.0	37.8	4,820*				150.0	42.3	5,220*				155.0	43.9	4,980*				160.0	45.2	4,670*			
155.0	35.0	4,250*				155.0	39.9	4,690*				160.0	41.6	4,450*				165.0	43.1	4,230*			
160.0	31.8	3,650*				160.0	37.3	4,140*				165.0	39.3	3,990*				170.0	41.0	3,790*			
						165.0	34.6	3,610*				170.0	36.8	3,520*				175.0	38.7	3,370*			
												175.0	34.2	3,060*									
Reeves	1		Reeves	1		Reeves	1		Reeves	1		Reeves	1		Reeves	1		Reeves	1		Reeves	1	

Note: Designed and rated to comply with ANSI Code B30.5

Capacities based on factors other than machine stability such as structural competence are shown by asterisk \* in the charts.

Refer to notes on page 20.



# CK1100G

## SPECIFICATIONS

### Fixed Jib Lift Capacity

Full Counterweight: 69,000 lbs Carbody Weight: 31,800

180' Boom																							
30 ft Jib						40 ft Jib						50 ft Jib						60 ft Jib					
O set Angle (deg.)						O set Angle (deg.)						O set Angle (deg.)						O set Angle (deg.)					
10			30			10			30			10			30			10			30		
Load Radius (ft)	Boom Angle (deg.)	Rated Load (lbs)	Load Radius (ft)	Boom Angle (deg.)	Rated Load (lbs)	Load Radius (ft)	Boom Angle (deg.)	Rated Load (lbs)	Load Radius (ft)	Boom Angle (deg.)	Rated Load (lbs)	Load Radius (ft)	Boom Angle (deg.)	Rated Load (lbs)	Load Radius (ft)	Boom Angle (deg.)	Rated Load (lbs)	Load Radius (ft)	Boom Angle (deg.)	Rated Load (lbs)	Load Radius (ft)	Boom Angle (deg.)	Rated Load (lbs)
50.0	78.9	22,200*				55.0	78.7	21,670*				55.0	79.7	20,000*				60.0	79.3	18,000*			
55.0	77.4	21,750*	55.0	79.9	21,000*	60.0	77.3	21,270*				60.0	78.4	20,000*				65.0	78.0	18,000*			
60.0	76.0	21,360*	60.0	78.5	20,870*	65.0	76.0	20,870*	65.0	79.1	14,940*	65.0	77.1	20,000*				70.0	76.8	18,000*			
65.0	74.6	20,700	65.0	77.1	20,500*	70.0	74.7	18,840	70.0	77.7	14,480*	70.0	75.9	19,060	70.0	79.6	11,300*	75.0	75.5	17,230	75.0	79.9	8,990*
70.0	73.2	18,560	70.0	75.6	19,310	75.0	73.2	16,880	75.0	76.3	14,020*	75.0	74.5	17,100	75.0	78.2	10,930*	80.0	74.3	15,650	80.0	78.6	8,700*
75.0	71.7	16,600	75.0	74.1	17,300	80.0	71.9	15,290	80.0	74.9	13,620*	80.0	73.2	15,490	80.0	76.9	10,600*	85.0	73.0	14,240	85.0	77.3	8,460*
80.0	70.3	15,030	80.0	72.6	15,670	85.0	70.5	13,910	85.0	73.5	13,240*	85.0	71.9	14,100	85.0	75.5	10,310*	90.0	71.8	13,020	90.0	76.0	8,200*
85.0	68.8	13,660	85.0	71.2	14,240	90.0	69.1	12,690	90.0	72.1	12,890*	90.0	70.6	12,890	90.0	74.2	10,030*	95.0	70.4	11,860	95.0	74.6	7,950*
90.0	67.4	12,470	90.0	69.7	13,000	95.0	67.6	11,550	95.0	70.5	12,210	95.0	69.2	11,720	95.0	72.7	9,740*	100.0	69.2	10,890	100.0	73.3	7,760*
95.0	65.8	11,330	95.0	68.1	11,810	100.0	66.2	10,600	100.0	69.1	11,190	100.0	67.8	10,750	100.0	71.4	9,500*	105.0	67.9	10,000	105.0	72.0	7,530*
100.0	64.3	10,380	100.0	66.5	10,820	105.0	64.8	9,740	105.0	67.6	10,290	105.0	66.5	9,890	105.0	70.0	9,280*	110.0	66.6	9,230	110.0	70.7	7,360*
105.0	62.8	9,540	105.0	65.0	9,940	110.0	63.3	8,970	110.0	66.1	9,470	110.0	65.1	9,100	110.0	68.5	9,060*	115.0	65.2	8,460	115.0	69.2	7,160*
110.0	61.3	8,770	110.0	63.4	9,140	115.0	61.8	8,200	115.0	64.5	8,680	115.0	63.6	8,350	115.0	67.0	8,840*	120.0	63.8	7,820	120.0	67.8	7,010*
115.0	59.6	8,020	115.0	61.7	8,370	120.0	60.3	7,560	120.0	63.0	8,000	120.0	62.2	7,710	120.0	65.6	8,280	125.0	62.5	7,230	125.0	66.4	6,850*
120.0	58.0	7,380	120.0	60.1	7,710	125.0	58.8	6,980	125.0	61.4	7,380	125.0	60.8	7,120	125.0	64.1	7,640	130.0	61.1	6,670	130.0	65.0	6,700*
125.0	56.4	6,810	125.0	58.4	7,090	130.0	57.2	6,430	130.0	59.8	6,830	130.0	59.3	6,560	130.0	62.6	7,070	135.0	59.7	6,150*	135.0	63.6	6,540*
130.0	54.7	6,280	130.0	56.8	6,540	135.0	55.6	5,950	135.0	58.2	6,300	135.0	57.8	6,080	135.0	61.1	6,540	140.0	58.2	5,590*	140.0	62.0	6,210
135.0	53.0	5,770*	135.0	55.0	6,040	140.0	53.9	5,370*	140.0	56.4	5,770	140.0	56.2	5,510*	140.0	59.4	6,010	145.0	56.8	5,110*	145.0	60.5	5,700*
140.0	51.2	5,180*	140.0	53.1	5,480*	145.0	52.3	4,870*	145.0	54.7	5,260*	145.0	54.7	5,020*	145.0	57.8	5,510*	150.0	55.3	4,620*	150.0	59.0	5,220*
145.0	49.4	4,650*	145.0	51.3	4,960*	150.0	50.6	4,380*	150.0	53.0	4,760*	150.0	53.1	4,540*	150.0	56.2	5,020*	155.0	53.8	4,210*	155.0	57.5	4,760*
150.0	47.6	4,160*				155.0	48.8	3,920*				155.0	51.5	4,100*	155.0	54.5	4,560*	160.0	52.2	3,760*	160.0	55.8	4,290*
155.0	45.7	3,680*				160.0	46.9	3,460*				160.0	49.8	3,630*	160.0	52.7	4,070*	165.0	50.6	3,370*	165.0	54.1	3,880*
160.0	43.6	3,210*				165.0	45.1	3,040*				165.0	48.1	3,240*							170.0	52.4	3,480*
Reeves	1		Reeves	1		Reeves	1		Reeves	1		Reeves	1		Reeves	1		Reeves	1		Reeves	1	

190' Boom																							
30 ft Jib						40 ft Jib						50 ft Jib						60 ft Jib					
O set Angle (deg.)						O set Angle (deg.)						O set Angle (deg.)						O set Angle (deg.)					
10			30			10			30			10			30			10			30		
Load Radius (ft)	Boom Angle (deg.)	Rated Load (lbs)	Load Radius (ft)	Boom Angle (deg.)	Rated Load (lbs)	Load Radius (ft)	Boom Angle (deg.)	Rated Load (lbs)	Load Radius (ft)	Boom Angle (deg.)	Rated Load (lbs)	Load Radius (ft)	Boom Angle (deg.)	Rated Load (lbs)	Load Radius (ft)	Boom Angle (deg.)	Rated Load (lbs)	Load Radius (ft)	Boom Angle (deg.)	Rated Load (lbs)	Load Radius (ft)	Boom Angle (deg.)	Rated Load (lbs)
50.0	79.4	19,440*				55.0	79.2	18,950*				60.0	78.9	18,470*				60.0	79.7	18,000*			
55.0	78.0	19,020*				60.0	77.9	18,560*				65.0	77.7	18,070*				65.0	78.5	17,960*			
60.0	76.7	18,620*	60.0	79.0	18,250*	65.0	76.6	18,160*	65.0	79.6	15,100*	70.0	76.5	17,700*				70.0	77.4	17,590*			
65.0	75.4	18,250*	65.0	77.7	17,870*	70.0	75.4	17,810*	70.0	78.3	14,660*	75.0	75.2	16,930	75.0	78.7	11,040*	75.0	76.1	17,080			
70.0	74.0	17,870*	70.0	76.3	17,520*	75.0	74.0	16,710	75.0	76.9	14,190*	80.0	73.9	15,320	80.0	77.5	10,730*	80.0	74.9	15,470	80.0	79.1	8,790*
75.0	72.6	16,420	75.0	74.9	17,150	80.0	72.7	15,120	80.0	75.6	13,800*	85.0	72.7	13,930	85.0	76.2	10,420*	85.0	73.8	14,060	85.0	77.9	8,550*
80.0	71.2	14,850	80.0	73.5	15,520	85.0	71.4	13,730	85.0	74.3	13,420*	90.0	71.4	12,690	90.0	74.9	10,160*	90.0	72.6	12,830	90.0	76.6	8,310*
85.0	69.9	13,490	85.0	72.1	14,080	90.0	70.1	12,520	90.0	72.9	13,090*	95.0	70.1	11,550	95.0	73.5	9,870*	95.0	71.3	11,680	95.0	75.3	8,060*
90.0	68.5	12,270	90.0	70.7	12,850	95.0	68.7	11,370	95.0	71.5	12,050	100.0	68.8	10,580	100.0	72.2	9,630*	100.0	70.1	10,710	100.0	74.1	7,840*
95.0	67.0	11,150	95.0	69.2	11,660	100.0	67.3	10,420	100.0	70.1	11,040	105.0	67.5	9,720	105.0	70.9	9,410*	105.0	68.8	9,830	105.0	72.8	7,640*
100.0	65.6	10,200	100.0	67.7	10,670	105.0	66.0	9,540	105.0	68.7	10,140	110.0	66.2	8,920	110.0	69.6	9,190*	110.0	67.6	9,030	110.0	71.5	7,450*
105.0	64.1	9,340	105.0	66.3	9,780	110.0	64.6	8,770	110.0	67.3	9,320	115.0	64.8	8,170	115.0	68.1	8,810	115.0	66.3	8,260*	115.0	70.2	7,270*
110.0	62.7	8,570	110.0	64.8	8,970	115.0	63.1	8,020	115.0	65.8	8,530	120.0	63.5	7,510	120.0	66.7	8,130	120.0	65.0	7,580*	120.0	68.9	7,090*
115.0	61.1	7,840	115.0	63.2	8,200	120.0	61.7	7,380	120.0	64.3	7,840	125.0	62.1	6,900*	125.0	65.3	7,490	125.0	63.7	6,940*	125.0	67.5	6,940*
120.0	59.6	7,200	120.0	61.7	7,530	125.0	60.3	6,790	125.0	62.9	7,230	130.0	60.8	6,300*	130.0	63.9	6,870*	130.0	62.4	6,370*	130.0	66.2	6,790*
125.0	58.1	6,630	125.0	60.1	6,940	130.0	58.8	6,190*	130.0	61.4	6,650	135.0	59.4	5,750*	135.0	62.5	6,300*	135.0	61.1	5,820*	135.0	64.8	6,480*
130.0	56.6	6,040*	130.0	58.5	6,370	135.0	57.4	5,640*	135.0	59.9	6,080*	140.0	57.9	5,200*	140.0	60.9	5,730*	140.0	59.7	5,260*	140.0	63.4	5,900*
135.0	55.0	5,460*	135.0	56.9	5,790*	140.0	55.8	5,070*	140.0	58.2	5,510*	145.0	56.4	4,710*	145.0	59.5	5,220*	145.0	58.3	4,780*	145.0	62.0	5,400*
140.0	53.3	4,890*	140.0	55.2	5,220*	145.0	54.2	4,580*	145.0	56.6	4,980*	150.0	55.0	4,250*	150.0	57.9	4,730*	150.0	56.9	4,340*	150.0	60.5	4,930*
145.0	51.6	4,380*	145.0	53.5	4,690*	150.0	52.7	4,120*	150.0	55.0	4,490*	155.0	53.5	3,810*	155.0	56.4	4,290*	155.0	55.5	3,900*	155.0	59.1	4,470*
150.0	50.0	3,920*	150.0	51.8	4,210*	155.0	51.0	3,680*	155.0	53.4	4,030*	160.0	51.8	3,370*	160.0	54.7	3,830*	160.0	54.0	3,480*	160.0	57.5	4,030*
155.0	48.2	3,460*				160.0	49.3	3,210*				165.0	53.1	3,410*	165.0	52.6	3,080*	165.0	52.6	3,080*	170.0	54.4	3,240*
Reeves	1		Reeves	1		Reeves	1		Reeves	1		Reeves	1		Reeves	1		Reeves	1		Reeves	1	

Note: Designed and rated to comply with ANSI Code B30.5

Capacities based on factors other than machine stability such as structural competence are shown by asterisk \* in the charts.

Refer to notes on page 20.

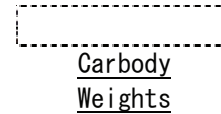
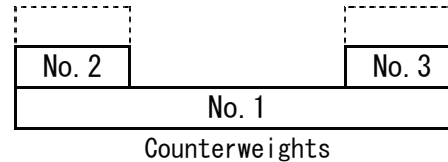
## Supplemental Data - Clamshell

1. Rated loads included in the charts are the maximum allowable freely suspended loads at a given boom length, boom angle and load radius, and have been determined for the machine standing level on firm supporting surface under ideal operating conditions. The user must limit or de-rate rated loads to allow for adverse conditions (such as soft or uneven ground, out-of-level conditions, wind, side loads, pendulum action, jerking or sudden stopping of loads, inexperience of personnel, multiple machine lifts, and traveling with a load).
2. Rated loads do not exceed 66% of minimum tipping loads. Rated loads based on factors other than machine stability such as structural competence are shown by asterisk \* in the charts.
3. The machine must be reeved and set-up as stated in the operation manual and all the instruction manuals if these manuals are missing, obtain replacements.
  - Machine shall be positively secured to prevent shifting.
  - Boom backstops are required for all boom length.
  - Gantry must be fully raised position for all operations.
  - Crawlers must be fully extended and be locked in position.
  - Must have 43,600 lbs (2) Counterweights installed, and without carbody weights.
4. Do not attempt to lift where no radius on load is listed as crane may tip or collapse.
5. Attempting to lift more than rated loads may cause machine to tip or collapse. Do not tip machine to determine rated loads.
6. Weight of hooks, hook blocks, slings and other lifting devices are a part of the total load. Their total weight must be subtracted from the rated load to obtain the weight that can be lifted.
7. The boom should be erected over the front of the crawlers, not laterally.
8. Least stable position is over the side.
9. Maximum hoist load for number of reeving parts of line for hoist rope.

### Maximum Load for Main Boom

No. of Parts of line	1
Maximum Loads (lbs)	22,000

10. Rated loads listed apply only to the machine as originally manufactured and designed by KOBELCO CRANES CO., LTD. Modifications to this machine or use of equipment other than that specified can reduce operating capacity.
11. Assembling the Counterweight  
43,600 lbs counterweight (No. 1 ~ No. 3)  
Without Carbody weights



Operation of this equipment in excess of rated loads or disregard of instruction voids the warranty.

### Clamshell

#### Boom:

Welded lattice construction using tubular, high-tensile steel chords with pin connections between each section.

Basic boom length: 40 ft (12.2 m)

Max. boom length: 120 ft (36.6 m)

Limit on clamshell bucket weight: 4,600 lbs (2,100 kg)

Optional tagline: Hydraulic operated type and spring type.

#### Boom Component Chart:

Boom length ft (m)	Boom arrangement
40 (12.2)	Base-Tip
50 (15.2)	Base-A-Tip
60 (18.3)	Base-A-A-Tip, Base-B-Tip
70 (21.3)	Base-A-B-Tip
80 (24.4)	Base-A-A-B-Tip, Base-B-B-Tip
90 (27.4)	Base-A-C-Tip
100 (30.5)	Base-A-A-B-B-Tip, Base-A-A-C-Tip
110 (33.5)	Base-A-B-C-Tip
120 (36.6)	Base-A-A-B-C-Tip, Base-B-B-C-Tip

Base = Boom Base

Insert: A = 10 ft (3.05 m)

B = 20 ft (6.10 m)

C = 40 ft (12.2 m)

Tip = Boom Tip

1. Figures represent maximum allowable capacity, and assume level, ground and ideal working conditions.
2. Capacities are calculated at 66% of the minimum tipping loads.
3. Capacities are maximum recommended by PCSA Standard #4. Allowances must be made by the user for such unfavorable conditions as a sort of uneven supporting surface, rapid cycle operations, or bucket.
4. The combined weight of the bucket and load must not exceed these capacities.

*3 Counterweights (43,600 lbs) - Without Carbody weights - Crawlers in extended position.*

40' Boom			50' Boom			60' Boom		
Load Radius (ft)	Boom Angle (deg.)	360° Rated Load (lbs)	Load Radius (ft)	Boom Angle (deg.)	360° Rated Load (lbs)	Load Radius (ft)	Boom Angle (deg.)	360° Rated Load (lbs)
22.0	63.7	22,000 *	<b>26.0</b>	64.3	22,000 *	30.0	64.6	22,000 *
24.0	60.5	<b>22,000 *</b>	28.0	61.7	22,000 *	<b>32.0</b>	62.5	22,000 *
26.0	57.1	<b>22,000 *</b>	<b>30.0</b>	59.0	22,000 *	34.0	60.3	21,400 *
28.0	53.5	<b>22,000 *</b>	32.0	56.3	22,000 *	<b>36.0</b>	58.1	20,200 *
30.0	49.8	<b>22,000 *</b>	<b>34.0</b>	53.5	21,400 *	38.0	55.8	19,200 *
32.0	45.9	<b>22,000 *</b>	36.0	50.5	<b>20,200 *</b>	<b>40.0</b>	53.4	18,200 *
34.0	41.7	21,400 *	<b>38.0</b>	47.4	19,200 *	42.0	51.0	17,300 *
36.0	37.0	<b>20,200 *</b>	40.0	44.2	<b>18,200 *</b>	<b>44.0</b>	48.4	16,500 *
38.0	31.8	19,200 *	<b>42.0</b>	40.7	17,300 *	46.0	45.8	15,800 *
40.0	25.7	<b>18,200 *</b>	44.0	37.0	<b>16,500 *</b>	<b>48.0</b>	43.0	15,200 *
			<b>46.0</b>	32.9	15,800 *	50.0	40.1	14,600 *
			48.0	28.3	<b>15,200 *</b>	<b>52.0</b>	37.0	14,000 *
						54.0	33.6	13,500 *
						56.0	29.9	13,000 *
						58.0	25.7	12,500 *

Refer to notes on page 29.

# CK1100G

## SPECIFICATIONS

### Clamshell

3 Counterweights (43,600 lbs) - Without Carbody weights - Crawlers in extended position.

70' Boom			80' Boom			90' Boom		
Load Radius (ft)	Boom Angle (deg.)	360° Rated Load (lbs)	Load Radius (ft)	Boom Angle (deg.)	360° Rated Load (lbs)	Load Radius (ft)	Boom Angle (deg.)	360° Rated Load (lbs)
34.0	64.9	21,400 *	<b>38.0</b>	65.1	19,200 *	42.0	65.2	17,300 *
36.0	63.1	<b>20,200 *</b>	40.0	63.5	18,200 *	<b>44.0</b>	63.8	16,500 *
38.0	61.2	<b>19,200 *</b>	<b>42.0</b>	61.9	17,300 *	46.0	62.4	15,800 *
40.0	59.3	<b>18,200 *</b>	44.0	60.2	16,500 *	<b>48.0</b>	60.9	15,200 *
42.0	57.4	<b>17,300 *</b>	<b>46.0</b>	58.6	15,800 *	50.0	59.5	14,600 *
44.0	55.4	<b>16,500 *</b>	48.0	56.9	15,200 *	<b>52.0</b>	58.0	14,000 *
46.0	53.4	<b>15,800 *</b>	50.0	55.1	14,600 *	54.0	56.4	13,500 *
48.0	51.3	<b>15,200 *</b>	52.0	53.3	14,000 *	56.0	54.9	13,000 *
50.0	49.1	<b>14,600 *</b>	54.0	51.5	13,500 *	58.0	53.3	12,500 *
52.0	46.9	<b>14,000 *</b>	56.0	49.6	13,000 *	60.0	51.7	12,100 *
54.0	44.6	<b>13,500 *</b>	58.0	47.7	12,500 *	62.0	50.0	11,700 *
56.0	42.2	<b>13,000 *</b>	60.0	45.7	12,100 *	64.0	48.3	11,400 *
58.0	39.6	<b>12,500 *</b>	62.0	43.7	11,700 *	66.0	46.6	11,000 *
60.0	37.0	<b>12,100 *</b>	64.0	41.5	11,400 *	68.0	44.8	10,700 *
62.0	34.1	<b>11,700 *</b>	66.0	39.3	11,000 *	70.0	43.0	10,400 *
64.0	31.0	<b>11,400 *</b>	68.0	37.0	10,700 *	72.0	41.0	10,100 *
66.0	27.6	<b>11,000 *</b>	70.0	34.5	10,400 *	74.0	39.0	9,700
			72.0	31.8	10,100 *	76.0	36.9	9,200
			74.0	28.9	9,800 *	78.0	34.7	9,000
			76.0	25.7	9,400 *	80.0	32.4	8,500
						82.0	29.9	8,300
						84.0	27.2	7,900
100' Boom			110' Boom			120' Boom		
Load Radius (ft)	Boom Angle (deg.)	360° Rated Load (lbs)	Load Radius (ft)	Boom Angle (deg.)	360° Rated Load (lbs)	Load Radius (ft)	Boom Angle (deg.)	360° Rated Load (lbs)
46.0	65.4	15,800 *	56.0	62.0	11,900 *	56.0	64.5	11,400 *
48.0	64.1	15,200 *	58.0	60.8	11,700 *	58.0	63.4	11,300 *
50.0	62.8	14,600 *	60.0	59.6	11,600 *	60.0	62.3	11,200 *
52.0	61.5	14,000 *	62.0	58.3	11,300 *	62.0	61.3	11,000 *
54.0	60.2	13,500 *	64.0	57.1	11,100 *	64.0	60.2	10,800 *
56.0	58.8	13,000 *	66.0	55.8	10,800 *	66.0	59.0	10,600 *
58.0	57.5	12,500 *	68.0	54.6	10,400 *	68.0	57.9	10,200 *
60.0	56.1	12,100 *	70.0	53.3	10,100	70.0	56.8	9,900
62.0	54.7	11,700 *	72.0	52.0	9,700	72.0	55.6	9,500
64.0	53.3	11,400 *	74.0	50.6	9,300	74.0	54.5	9,100
66.0	51.8	11,000 *	76.0	49.2	8,900	76.0	53.3	8,800
68.0	50.4	10,700 *	78.0	47.8	8,500	78.0	52.1	8,400
70.0	48.8	10,300	80.0	46.4	8,200	80.0	50.8	8,100
72.0	47.3	9,900	82.0	45.0	7,900	82.0	49.6	7,700
74.0	45.7	9,400	84.0	43.4	7,500	84.0	48.3	7,400
76.0	44.1	9,000	86.0	41.9	7,200	86.0	47.0	7,100
78.0	42.4	8,800	88.0	40.3	7,000	88.0	45.7	6,800
80.0	40.6	8,300	90.0	38.6	6,800	90.0	44.3	6,600
82.0	38.8	8,100	92.0	36.9	6,600	92.0	42.9	6,400
84.0	36.9	7,700	94.0	35.1	6,400	94.0	41.5	6,200
86.0	35.0	7,400	96.0	33.3	6,200	96.0	40.0	6,000
88.0	32.9	7,200	98.0	31.3	5,900	98.0	38.5	5,700
90.0	30.7	7,000	100.0	29.2	5,700	100.0	36.9	5,500
92.0	28.3	6,800	102.0	27.0	5,500	102.0	35.3	5,300
94.0	25.8	6,600	104.0	24.5	5,300	104.0	33.6	5,100
						106.0	31.8	5,000

Refer to notes on page 29.



## Supplemental Data - Barge

1. Rated loads included in the charts are the maximum allowable freely suspended loads at a given boom length, boom angle and load radius, and have been determined for the machine standing level on firm supporting surface under ideal operating conditions. The user must limit or de-rate rated loads to allow for adverse conditions (such as soft or uneven ground, out-of-level conditions, wind, side loads, pendulum action, jerking or sudden stopping of loads, inexperience of personnel, multiple machine lifts, and traveling with a load).
2. Rated loads do not exceed 75% of minimum tipping loads. Rated loads based on factors other than machine stability such as structural competence are shown by asterisk \* in the charts.
3. The machine must be reeved and set-up as stated in the operation manual and all the instruction manuals if these manuals are missing, obtain replacements.
  - Machine shall be positively secured to prevent shifting.
  - Boom backstops are required for all boom length.
  - Gantry must be fully raised position for all operations.
  - Crawlers must be fully extended and be locked in position.
  - Must have 69,000 lbs (5) Counterweights fully installed.
  - Must have 31,700 lbs (2) Carbody weights fully installed.
4. Do not attempt to lift where no radius on load is listed as crane may tip or collapse.
5. Attempting to lift more than rated loads may cause machine to tip or collapse. Do not tip machine to determine rated loads.
6. Weight of hooks, hook blocks, slings and other lifting devices are a part of the total load. Their total weight must be subtracted from the rated load to obtain the weight that can be lifted.
7. When lifting over boom point with jib or auxiliary sheave, rated loads for the boom must be deducted as shown below.

Jib Length	Aux Sheave	30 ft	40 ft	50 ft	60 ft
Deduct (lbs)	430	Not Applicable			

When auxiliary sheave is used for 8 or 7 reeving parts of line, it is not required to deduct 430 lbs from rated loads.

8. To install the jib is prohibited when the machine is on a barge.
9. The total load that can be lifted over an auxiliary sheave is the value for 430 lbs deducted from rated load for the boom without auxiliary sheave, but it should not exceed 24,000 lbs.

10. Boom lengths that can attach auxiliary sheave are from 40 ft (12.2 m) to 190 ft (57.9 m).
11. The boom should be erected over the front of the crawlers, not laterally.
12. Least stable position is over the side.
13. Maximum hoist load for number of reeving parts of line for hoist rope.

### Maximum Load for Main Boom

No. of Parts of line	1	2	3	4	5
Maximum Loads (lbs)	25,200	50,400	75,600	100,800	126,000

No. of Parts of line	6	7	8
Maximum Loads (lbs)	151,200	176,400	220,000

### Maximum Load for Auxiliary Sheave

No. of Parts of line	1
Maximum Loads (lbs)	24,000

14. Weight of recommended hook block.

Hook Block	110 t	77 t	55 t	39 t	12 t ball hook
Weight (lbs)	3,815	1,990	1,875	1,545	660

Warning: If the weight of the hook block to be used is light than the recommended weight, the jib may turn over backw or will be difficult to lower the empty hook block.

15. Rated loads listed apply only to the machine as originally manufactured and designed by KOBELCO CRANES CO., LTD. Modifications to this machine or use of equipment other than that specified can reduce operating capacity.
16. Designed and rated to comply with ANSI Code B30.5.

# CK1100G

## SPECIFICATIONS

### Barge

5 Counterweights (69,000 lbs) - 2 Carbody weights (31,800 lbs) - Crawlers in extended position.

40' Boom					50' Boom					60' Boom							
360° Rated Load (lbs)					360° Rated Load (lbs)					360° Rated Load (lbs)							
Load Radius (ft)	Boom Angle (deg.)	0 Degree Machine List	1 Degree Machine List	2 Degree Machine List	2 Degree Machine List	Load Radius (ft)	Boom Angle (deg.)	0 Degree Machine List	1 Degree Machine List	2 Degree Machine List	2 Degree Machine List	Load Radius (ft)	Boom Angle (deg.)	0 Degree Machine List	1 Degree Machine List	2 Degree Machine List	2 Degree Machine List
11.0	80.5	220,000 *				12.0	81.2	213,200 *				13.0	81.7	200,400 *			
12.0	79.0	213,300 *				13.0	80.0	200,600 *				14.0	80.7	187,400 *			
13.0	77.5	200,800 *				14.0	78.9	187,800 *				15.0	79.8	175,200 *			
14.0	76.0	188,100 *				15.0	77.7	175,600 *				16.0	78.8	164,800 *			
15.0	74.6	175,900 *	175,900 *			16.0	76.6	165,300 *				17.0	77.8	155,500 *			
16.0	73.1	165,500 *	165,500 *			17.0	75.4	156,000 *				18.0	76.8	146,900 *			
17.0	71.6	156,300 *	156,300 *	127,700 *		18.0	74.2	147,400 *	143,200 *			19.0	75.9	139,800 *	123,900 *		
18.0	70.1	147,800 *	146,400 *	126,100 *		19.0	72.9	140,100 *	132,200 *			20.0	74.9	132,200 *	118,100 *		
19.0	68.5	140,500 *	134,600 *	122,400 *		20.0	71.7	132,400 *	122,900 *			22.0	72.9	115,100 *	105,300 *		
20.0	66.9	132,800 *	124,900 *	116,500 *	100,300 *	22.0	69.3	115,300 *	106,800 *	98,500 *		24.0	70.9	100,800 *	93,000 *	81,600 *	
22.0	63.7	115,600 *	108,300 *	103,400 *	97,800 *	24.0	66.8	101,000 *	94,400 *	89,500 *	77,800 *	26.0	68.8	89,100 *	83,200 *	78,700 *	
24.0	60.4	101,300 *	95,600 *	92,000 *	88,400 *	26.0	64.3	89,400 *	84,500 *	80,700 *	75,600 *	28.0	66.7	80,500 *	75,300 *	71,600 *	63,000 *
26.0	57.0	89,600 *	85,600 *	82,700 *	79,900 *	28.0	61.7	80,700 *	76,400 *	73,400 *	70,700 *	30.0	64.6	72,800 *	68,700 *	65,700 *	61,500 *
28.0	53.4	80,900 *	77,400 *	75,100 *	72,900 *	30.0	59.1	73,000 *	69,700 *	67,200 *	64,900 *	32.0	62.5	66,600 *	63,200 *	60,600 *	58,400 *
30.0	49.8	73,300 *	70,600 *	68,700 *	67,000 *	32.0	56.3	67,000 *	63,900 *	61,900 *	60,000 *	34.0	60.3	61,600 *	58,400 *	56,200 *	54,400 *
32.0	45.8	67,200 *	64,800 *	63,400 *	62,000 *	34.0	53.4	62,000 *	59,100 *	57,400 *	55,900 *	36.0	58.0	57,300 *	54,200 *	52,400 *	50,800 *
34.0	41.2	61,700 *	60,000 *	58,900 *	57,800 *	36.0	50.3	57,800 *	55,000 *	53,600 *	52,300 *	38.0	55.7	53,100 *	50,600 *	49,100 *	47,700 *
36.0	36.2	56,600 *	55,700 *	54,700 *	53,700 *	38.0	47.3	53,600 *	51,400 *	50,100 *	49,000 *	40.0	53.4	49,300 *	47,500 *	46,100 *	44,900 *
38.0	31.1	51,500 *	51,000 *	49,700 *	48,400 *	40.0	44.0	49,800 *	48,100 *	47,200 *	46,300 *	42.0	50.9	46,600 *	44,600 *	43,500 *	42,400 *
40.0	25.4	45,900 *	44,800 *	43,600 *	42,500 *	42.0	40.4	47,000 *	45,400 *	44,600 *	43,800 *	44.0	48.3	43,800 *	42,100 *	41,100 *	40,200 *
						44.0	36.7	44,300 *	42,900 *	42,200 *	41,500 *	46.0	45.8	41,100 *	39,800 *	38,900 *	38,100 *
						46.0	62.9	41,500 *	40,600 *	40,000 *	39,500 *	48.0	42.8	39,200 *	37,700 *	37,000 *	36,300 *
						48.0	27.6	38,300 *	38,200 *	37,400 *	36,700 *	50.0	39.9	37,200 *	35,900 *	35,300 *	34,800 *
						50.0	22.3	35,100 *	34,800 *	33,900 *		55.0	31.2	32,900 *	31,900 *	31,500 *	31,100 *
												60.0	20.7	28,600 *			
<b>Reeves</b>		<b>8</b>	<b>7</b>	<b>6</b>	<b>4</b>	<b>Reeves</b>		<b>8</b>	<b>6</b>	<b>4</b>	<b>4</b>	<b>Reeves</b>		<b>8</b>	<b>5</b>	<b>4</b>	<b>4</b>
70' Boom					80' Boom					90' Boom							
360° Rated Load (lbs)					360° Rated Load (lbs)					360° Rated Load (lbs)							
Load Radius (ft)	Boom Angle (deg.)	0 Degree Machine List	1 Degree Machine List	2 Degree Machine List	2 Degree Machine List	Load Radius (ft)	Boom Angle (deg.)	0 Degree Machine List	1 Degree Machine List	2 Degree Machine List	2 Degree Machine List	Load Radius (ft)	Boom Angle (deg.)	0 Degree Machine List	1 Degree Machine List	2 Degree Machine List	2 Degree Machine List
15.0	81.3	151,000 *				16.0	81.6	151,000 *				17.0	81.9	125,800 *			
16.0	80.4	151,000 *				17.0	80.9	149,300 *				18.0	81.3	125,800 *			
17.0	79.6	149,400 *				18.0	80.2	146,500 *				19.0	80.7	125,800 *			
18.0	78.7	146,700 *				19.0	79.5	139,400 *				20.0	80.0	124,000 *			
19.0	77.9	139,800 *				20.0	78.8	131,800 *				22.0	78.7	112,500 *			
20.0	77.1	132,200 *				22.0	77.3	115,100 *				24.0	77.4	100,800 *			
22.0	75.4	115,400 *				24.0	75.8	101,000 *				26.0	76.1	89,100 *			
24.0	73.7	101,300 *	92,400 *			26.0	74.3	89,200 *	81,800 *			28.0	74.8	80,500 *	73,000 *		
26.0	72.0	89,600 *	82,800 *	68,700 *		28.0	72.8	80,500 *	74,100 *			30.0	73.5	72,800 *	66,900 *		
28.0	70.3	80,800 *	75,000 *	67,400 *		30.0	71.2	72,800 *	67,700 *	58,100 *		32.0	72.1	66,600 *	61,600 *	50,600 *	
30.0	68.5	73,000 *	68,500 *	65,000 *	53,600 *	32.0	69.7	66,600 *	62,200 *	57,100 *	46,400 *	34.0	70.8	61,600 *	56,900 *	49,600 *	
32.0	66.7	67,000 *	63,000 *	60,100 *	51,800 *	34.0	68.2	61,600 *	57,500 *	54,700 *	44,700 *	36.0	69.4	57,300 *	53,000 *	49,000 *	39,900 *
34.0	64.9	62,000 *	58,300 *	55,700 *	49,900 *	36.0	66.6	57,300 *	53,500 *	51,000 *	43,300 *	38.0	68.0	53,100 *	49,500 *	47,000 *	38,500 *
36.0	63.0	57,800 *	54,200 *	52,100 *	47,900 *	38.0	65.1	53,100 *	50,000 *	47,800 *	41,800 *	40.0	66.6	49,300 *	46,300 *	44,200 *	37,600 *
38.0	61.2	53,600 *	50,600 *	48,700 *	45,800 *	40.0	63.5	49,300 *	46,800 *	45,000 *	40,400 *	42.0	65.2	46,500 *	43,600 *	41,700 *	36,400 *
40.0	59.3	49,800 *	47,400 *	45,700 *	43,800 *	42.0	61.8	46,600 *	44,100 *	42,400 *	39,000 *	44.0	63.8	43,700 *	41,100 *	39,500 *	35,400 *
42.0	57.3	46,900 *	44,600 *	43,100 *	41,500 *	44.0	60.2	43,800 *	41,600 *	40,100 *	37,700 *	46.0	62.4	40,900 *	38,900 *	37,400 *	34,300 *
44.0	55.3	44,100 *	42,100 *	40,800 *	39,700 *	46.0	58.5	41,100 *	39,300 *	38,000 *	36,200 *	48.0	60.9	38,900 *	36,900 *	35,600 *	33,200 *
46.0	53.3	41,300 *	39,800 *	38,700 *	37,700 *	48.0	56.8	39,100 *	37,300 *	36,200 *	34,800 *	50.0	59.4	36,900 *	35,100 *	34,000 *	32,000 *
48.0	51.2	39,400 *	37,700 *	36,700 *	35,900 *	50.0	55.1	37,100 *	35,500 *	34,500 *	33,600 *	55.0	55.7	32,500 *	31,200 *	30,300 *	29,200 *
50.0	49.0	37,400 *	35,900 *	35,100 *	34,300 *	55.0	50.5	32,700 *	31,500 *	30,800 *	30,000 *	60.0	51.7	29,000 *	28,100 *	27,400 *	26,600 *
55.0	43.2	33,200 *	32,000 *	31,400 *	30,800 *	60.0	45.7	29,200 *	28,300 *	27,700 *	27,200 *	65.0	47.4	26,100 *	25,400 *	24,800 *	24,200 *
60.0	36.9	29,600 *	28,800 *	28,400 *	28,100 *	65.0	40.4	26,300 *	25,700 *	25,300 *	24,800 *	70.0	42.9	23,800 *	23,100 *	22,700 *	22,200 *
65.0	29.2	26,800 *	26,300 *	26,000 *	25,800 *	70.0	34.3	24,100 *	23,400 *	23,100 *	22,800 *	75.0	37.9	21,800 *	21,200 *	20,800 *	20,500 *
						75.0	26.9	22,100 *	21,500 *	21,300 *	21,100 *	80.0	32.2	20,100 *	19,600 *	19,300 *	19,100 *
												85.0	25.7	18,600 *	18,300 *	18,100 *	17,900 *
<b>Reeves</b>		<b>6</b>	<b>4</b>	<b>4</b>	<b>4</b>	<b>Reeves</b>		<b>6</b>	<b>4</b>	<b>4</b>	<b>2</b>	<b>Reeves</b>		<b>5</b>	<b>4</b>	<b>4</b>	<b>2</b>

Refer to notes on page 32.

# CK1100G

## SPECIFICATIONS

### Barge

5 Counterweights (69,000 lbs) - 2 Carbody weights (31,800 lbs) - Crawlers in extended position.

100' Boom						110' Boom						120' Boom					
360° Rated Load (lbs)						360° Rated Load (lbs)						360° Rated Load (lbs)					
Load Radius (ft)	Boom Angle (deg.)	0 Degree Machine List	1 Degree Machine List	2 Degree Machine List	2 Degree Machine List	Load Radius (ft)	Boom Angle (deg.)	0 Degree Machine List	1 Degree Machine List	2 Degree Machine List	2 Degree Machine List	Load Radius (ft)	Boom Angle (deg.)	0 Degree Machine List	1 Degree Machine List	2 Degree Machine List	2 Degree Machine List
19.0	81.6	125,600 *				20.0	81.8	100,800 *				22.0	81.6	98,700 *			
20.0	81.0	123,600 *				22.0	80.8	100,800 *				24.0	80.6	94,200 *			
22.0	79.9	112,200 *				24.0	79.7	96,500 *				26.0	79.6	88,000 *			
24.0	78.7	100,600				26.0	78.6	88,500 *				28.0	78.6	79,900			
26.0	77.5	88,900				28.0	77.6	80,200				30.0	77.7	72,200			
28.0	76.3	80,200				30.0	76.5	72,400				32.0	76.7	66,100			
30.0	75.1	72,400				32.0	75.4	66,300				34.0	75.7	61,100	53,000 *		
32.0	74.0	66,300	60,800			34.0	74.3	61,300	55,900 *			36.0	74.7	56,800	51,300		
34.0	72.8	61,300	56,300			36.0	73.2	57,000	51,900			38.0	73.7	52,500	47,900		
36.0	71.6	57,000	52,300	43,500 *		38.0	72.2	52,700	48,600			40.0	72.7	48,700	45,000	33,900 *	
38.0	70.3	52,700	48,900	42,900 *		40.0	71.1	48,900	45,500	37,900 *		42.0	71.7	45,800	42,200	33,400 *	
40.0	69.1	48,900	45,800	42,400 *	34,800 *	42.0	70.0	46,200	42,900	37,500 *		44.0	70.7	43,000	39,800	33,000 *	
42.0	67.9	46,200	43,100	40,900 *	33,500 *	44.0	68.9	43,400	40,400	37,000 *	28,900 *	46.0	69.7	40,200	37,600	32,800 *	
44.0	66.6	43,400	40,700	38,800	32,500 *	46.0	67.8	40,700	38,200	36,200 *	28,600 *	48.0	68.6	38,300	35,600	32,300 *	
46.0	65.4	40,700	38,500	36,800	31,700 *	48.0	66.6	38,700	36,300	34,600	28,200 *	50.0	67.6	36,300	34,000	31,700 *	24,800 *
48.0	64.1	38,700	36,500	35,000	30,900 *	50.0	65.4	36,600	34,500	32,900	27,900 *	55.0	65.0	32,000	30,200	28,900	24,300 *
50.0	62.8	36,600	34,700	33,400	30,000 *	55.0	62.5	32,300	30,500	29,400	27,200 *	60.0	62.3	28,300	27,100	26,000	23,600 *
55.0	59.5	32,300	30,800	29,700	27,800 *	60.0	59.5	28,700	27,400	26,400	25,500	65.0	59.6	25,400	24,400	23,500	22,700
60.0	56.1	28,700	27,500	26,700	25,500	65.0	56.5	25,900	24,700	23,900	23,100	70.0	56.8	23,200	22,200	21,400	20,800
65.0	52.5	25,900	24,900	24,300	23,600	70.0	53.2	23,500	22,500	21,800	21,200	75.0	53.8	21,200	20,300	19,700	19,100
70.0	48.8	23,500	22,700	22,100	21,500	75.0	49.9	21,400	20,600	20,000	19,500	80.0	50.8	19,400	18,600	18,100	17,600
75.0	44.8	21,400	20,700	20,300	20,000	80.0	46.4	19,600	19,000	18,600	18,200	85.0	47.7	17,700	17,200	16,700	16,300
80.0	40.5	19,600	19,200	18,800	18,500	85.0	42.6	18,100	17,700	17,300	17,000	90.0	44.3	16,500	15,900	15,600	15,300
85.0	36.0	18,100	17,700	17,500	17,200	90.0	38.6	16,800	16,400	16,100	15,700	95.0	40.7	15,300	14,800	14,500	14,300
90.0	30.5	16,900	16,500	16,300	16,100	95.0	34.1	15,600	15,200	15,000	14,800	100.0	36.9	14,200	13,800	13,600	13,400
95.0	24.0	15,800	15,400	15,300	15,100	100.0	29.1	14,600	14,300	14,200	14,000	110.0	27.8	12,600	12,200	12,000	11,900
						105.0	23.2	13,770	13,500	13,300		115.0	22.2	11,840	11,500		
<b>Reeves</b>		<b>5</b>	<b>4</b>	<b>2</b>	<b>2</b>	<b>Reeves</b>		<b>4</b>	<b>4</b>	<b>2</b>	<b>2</b>	<b>Reeves</b>		<b>4</b>	<b>4</b>	<b>2</b>	<b>2</b>
130' Boom						140' Boom						150' Boom					
360° Rated Load (lbs)						360° Rated Load (lbs)						360° Rated Load (lbs)					
Load Radius (ft)	Boom Angle (deg.)	0 Degree Machine List	1 Degree Machine List	2 Degree Machine List	2 Degree Machine List	Load Radius (ft)	Boom Angle (deg.)	0 Degree Machine List	1 Degree Machine List	2 Degree Machine List	2 Degree Machine List	Load Radius (ft)	Boom Angle (deg.)	0 Degree Machine List	1 Degree Machine List	2 Degree Machine List	2 Degree Machine List
24.0	81.3	85,100 *				24.0	81.9	72,900 *				26.0	81.7	62,200 *			
26.0	80.4	83,900 *				26.0	81.1	71,800 *				28.0	80.9	61,300 *			
28.0	79.5	78,200 *				28.0	80.3	70,800 *				30.0	80.1	60,400 *			
30.0	78.6	71,900				30.0	79.4	69,000 *				32.0	79.4	59,400 *			
32.0	77.7	65,900				32.0	78.6	64,700 *				34.0	78.6	57,200 *			
34.0	76.9	60,900				34.0	77.8	60,500				36.0	77.8	54,100 *			
36.0	75.9	56,600				36.0	76.9	56,200				38.0	77.0	51,000 *			
38.0	75.0	52,300	46,400 *			38.0	76.1	52,000				40.0	76.3	48,000			
40.0	74.1	48,400	44,500			40.0	75.2	48,200	41,500 *			42.0	75.5	45,200	37,100 *		
42.0	73.2	45,600	41,700			42.0	74.4	45,400	40,600 *			44.0	74.7	42,400	36,600 *		
44.0	72.2	42,800	39,400	29,700 *		44.0	73.5	42,600	38,900			46.0	73.9	39,600	35,800 *		
46.0	71.3	40,000	37,200	29,400 *		46.0	72.7	39,800	36,800			48.0	73.1	37,500	34,500		
48.0	70.4	38,000	35,300	29,100 *		48.0	71.8	37,800	34,900			50.0	72.3	35,500	32,800	23,300 *	
50.0	69.4	36,000	33,600	28,700 *		50.0	71.0	35,800	33,200			55.0	70.3	31,200	29,000	22,700 *	
55.0	67.1	31,600	29,700	27,900 *	21,700 *	55.0	68.8	31,400	29,400	25,100 *	19,200 *	60.0	68.2	27,600	25,800	22,000 *	16,800 *
60.0	64.6	28,100	26,600	25,500	21,200 *	60.0	66.6	27,800	26,200	24,500 *	18,700 *	65.0	66.2	24,800	23,300	21,600 *	16,500 *
65.0	62.2	25,200	24,100	23,100	20,700 *	65.0	64.3	25,000	23,500	22,400 *	18,300 *	70.0	64.0	22,400	21,100	20,100 *	16,100 *
70.0	59.6	22,900	21,900	21,100	20,000 *	70.0	62.0	22,600	21,300	20,500	17,900 *	75.0	61.9	20,300	19,200	18,300	15,700 *
75.0	57.0	20,900	20,000	19,300	18,700	75.0	59.7	20,500	19,500	18,700	17,400 *	80.0	59.6	18,500	17,600	17,000	15,400 *
80.0	54.3	19,000	18,300	17,700	17,200	80.0	57.3	18,700	17,800	17,200	16,600	85.0	57.4	17,000	16,200	15,500	14,900 *
85.0	51.6	17,500	16,900	16,400	16,000	85.0	54.8	17,200	16,400	15,800	15,400	90.0	55.2	15,700	14,900	14,400	14,000
90.0	48.7	16,100	15,700	15,300	14,900	90.0	52.2	15,900	15,200	14,700	14,300	95.0	52.8	14,400	13,800	13,300	13,000
95.0	45.6	15,000	14,600	14,200	13,900	95.0	49.5	14,600	14,100	13,700	13,300	100.0	50.3	13,400	12,800	12,500	12,100
100.0	42.4	14,000	13,600	13,300	13,000	100.0	46.8	13,600	13,100	12,800	12,500	110.0	45.1	11,700	11,200	10,900	10,700
110.0	35.4	12,100	11,900	11,700	11,600	110.0	40.8	11,900	11,400	11,200	11,000	120.0	39.3	10,300	9,900	9,600	9,400
120.0	26.6	10,800	10,600	10,500	10,400	120.0	34.0	10,300	10,100	9,900	9,800	130.0	32.8	8,900	8,800	8,600	8,400
125.0	21.3	10,230	9,900			130.0	25.7	9,200	9,100	8,900	8,800	140.0	24.3	8,000	7,800	7,700	7,600
						135.0	20.5	8,830									
<b>Reeves</b>		<b>4</b>	<b>2</b>	<b>2</b>	<b>2</b>	<b>Reeves</b>		<b>4</b>	<b>2</b>	<b>2</b>	<b>2</b>	<b>Reeves</b>		<b>4</b>	<b>2</b>	<b>2</b>	<b>2</b>

Refer to notes on page 32.

# CK1100G

## SPECIFICATIONS


### Barge

5 Counterweights (69,000 lbs) - 2 Carbody weights (31,800 lbs) - Crawlers in extended position.

160' Boom						170' Boom						180' Boom						
360° Rated Load (lbs)						360° Rated Load (lbs)						360° Rated Load (lbs)						
Load Radius (ft)	Boom Angle (deg.)	0 Degree Machine List	1 Degree Machine List	2 Degree Machine List	2 Degree Machine List	Load Radius (ft)	Boom Angle (deg.)	0 Degree Machine List	1 Degree Machine List	2 Degree Machine List	2 Degree Machine List	Load Radius (ft)	Boom Angle (deg.)	0 Degree Machine List	1 Degree Machine List	2 Degree Machine List	2 Degree Machine List	
28.0	81.5	50,200 *				30.0	81.3	44,500 *				30.0	81.8	39,300 *				
30.0	80.8	50,100 *				32.0	80.7	43,900 *				32.0	81.2	38,800 *				
32.0	80.1	49,700 *				34.0	80.0	43,200 *				34.0	80.5	38,200 *				
34.0	79.4	49,200 *				36.0	79.3	42,500 *				36.0	79.9	37,600 *				
36.0	78.6	48,500 *				38.0	78.6	41,900 *				38.0	79.2	37,000 *				
38.0	77.9	47,800 *				40.0	77.9	41,200 *				40.0	78.6	36,400 *				
40.0	77.2	46,600 *				42.0	77.2	40,600 *				42.0	77.9	35,800 *				
42.0	76.4	44,300 *				44.0	76.5	40,000 *				44.0	77.2	35,100 *				
44.0	75.6	42,100 *	32,200 *			46.0	75.8	39,300 *				46.0	76.6	34,500 *				
46.0	74.9	39,800	31,700 *			48.0	75.1	37,400 *	28,400 *			48.0	75.9	33,900 *				
48.0	74.1	37,800	31,300 *			50.0	74.4	35,400 *	28,100 *			50.0	75.3	33,300 *				
50.0	73.4	35,800	31,000 *			55.0	72.6	31,200	27,100 *	17,700 *		55.0	73.7	30,800 *	24,200 *			
55.0	71.5	31,400	28,900 *	20,000 *		60.0	70.9	27,600	25,400 *	17,300 *		60.0	72.0	27,400	22,900 *	15,300 *		
60.0	69.6	27,800	26,000	19,300 *		65.0	69.1	24,600	23,000	16,900 *		65.0	70.3	24,400	21,800 *	15,100 *		
65.0	67.7	25,000	23,400	18,900 *	14,400 *	70.0	67.3	22,300	20,900	16,400 *	12,400 *	70.0	68.6	21,900	20,400 *	14,600 *	10,800 *	
70.0	65.8	22,600	21,200	18,500 *	14,000 *	75.0	65.4	20,300	19,000	16,000 *	12,200 *	75.0	66.9	19,900	18,700	14,200 *	10,600 *	
75.0	63.8	20,500	19,300	18,000 *	13,700 *	80.0	63.5	18,500	17,400	15,600 *	11,800 *	80.0	65.2	18,100	17,100	13,800 *	10,400 *	
80.0	61.8	18,700	17,700	16,900	13,400 *	85.0	61.6	16,800	16,000	15,300 *	11,500 *	85.0	63.4	16,600	15,700	13,500 *	10,000 *	
85.0	59.7	17,000	16,300	15,600	13,100 *	90.0	59.7	15,400	14,700	14,000	11,300 *	90.0	61.6	15,200	14,400	12,900 *	9,700 *	
90.0	57.6	15,700	15,000	14,300	12,800 *	95.0	57.8	14,300	13,600	13,200	11,100 *	95.0	59.8	14,000	13,200	12,200 *	9,500 *	
95.0	55.4	14,500	13,900	13,500	12,400 *	100.0	55.8	13,300	12,600	12,100	10,800 *	100.0	57.9	12,900	12,300	11,600 *	9,300 *	
100.0	53.2	13,500	12,900	12,400	12,000	110.0	51.5	11,500	10,900	10,600	10,100 *	110.0	54.0	11,100	10,600	10,300	8,500 *	
110.0	48.6	11,700	11,100	10,900	10,600	120.0	47.0	9,800	9,600	9,300	9,000	120.0	49.9	9,600	9,100	8,800	7,700 *	
120.0	43.6	10,100	9,800	9,600	9,300	130.0	42.2	8,700	8,400	8,200	8,000	130.0	45.6	8,500	8,000	7,700	6,900 *	
130.0	38.1	8,900	8,600	8,500	8,300	140.0	36.8	7,700	7,300	7,100	7,000	140.0	40.9	7,400	7,000	6,900	6,000 *	
140.0	31.6	7,900	7,800	7,600	7,500	150.0	30.5	6,800	6,500	6,400	6,200 *	150.0	35.7	6,500	6,200	6,000	5,000 *	
150.0	23.7	7,100	6,900	6,800	6,700	160.0	23.2	5,900	5,800 *	5,800 *	5,100 *	160.0	29.7	5,600	5,400	5,000 *	4,200 *	
						165.0	26.5	5,100	5,100	5,100	5,100 *	165.0	26.5	5,100	5,100	4,400 *	3,600 *	
<b>Reeves</b>	<b>2</b>	<b>2</b>	<b>2</b>	<b>2</b>		<b>Reeves</b>	<b>2</b>	<b>2</b>	<b>2</b>	<b>2</b>		<b>Reeves</b>	<b>2</b>	<b>2</b>	<b>2</b>	<b>2</b>		
190' Boom						200' Boom												
360° Rated Load (lbs)						360° Rated Load (lbs)												
Load Radius (ft)	Boom Angle (deg.)	0 Degree Machine List	1 Degree Machine List	2 Degree Machine List	2 Degree Machine List	Load Radius (ft)	Boom Angle (deg.)	0 Degree Machine List	1 Degree Machine List	2 Degree Machine List	2 Degree Machine List							
32.0	81.6	34,400 *				34.0	81.5	30,300 *										
34.0	81.0	33,800 *				36.0	80.9	29,700 *										
36.0	80.4	33,300 *				38.0	80.3	29,200 *										
38.0	79.8	32,700 *				40.0	79.7	28,700 *										
40.0	79.2	32,200 *				42.0	79.1	28,200 *										
42.0	78.6	31,700 *				44.0	78.6	27,700 *										
44.0	78.0	31,100 *				46.0	78.0	27,300 *										
46.0	77.4	30,600 *				48.0	77.4	26,800 *										
48.0	76.7	30,100 *				50.0	76.8	26,300 *										
50.0	76.1	29,600 *				55.0	75.3	24,900 *										
55.0	74.5	28,100 *	21,700 *			60.0	73.8	23,200 *	18,200 *									
60.0	73.0	26,200 *	20,600 *			65.0	72.4	21,500 *	17,100 *	11,700 *								
65.0	71.4	24,000 *	19,500 *	13,300 *		70.0	70.9	20,000 *	16,100 *	11,300 *								
70.0	69.8	21,800	18,400 *	13,100 *		75.0	69.3	18,500 *	15,100 *	11,000 *								
75.0	68.2	19,900	17,300 *	12,700 *	9,200 *	80.0	67.8	17,100 *	14,100 *	10,600 *	7,700 *							
80.0	66.5	18,000	16,200 *	12,400 *	9,000 *	85.0	66.2	15,900 *	13,300 *	10,100 *	7,500 *							
85.0	64.9	16,400	15,300 *	11,900 *	8,800 *	90.0	64.6	14,700	12,400 *	9,500 *	7,200 *							
90.0	63.2	15,000	14,100	11,300 *	8,600 *	95.0	63.0	13,500	11,700 *	9,000 *	7,000 *							
95.0	61.5	13,900	13,000	10,600 *	8,400 *	100.0	61.4	12,400	11,000 *	8,400 *	6,800 *							
100.0	59.7	12,900	12,000	10,000 *	8,200 *	110.0	58.1	10,600	9,500 *	7,400 *	6,000 *							
110.0	56.2	11,000	10,400	8,900 *	7,400 *	120.0	54.6	9,200	8,200 *	6,500 *	5,200 *							
120.0	52.5	9,400	9,100	7,900 *	6,500 *	130.0	51.1	7,800	7,100 *	5,600 *	4,500 *							
130.0	48.5	8,200	7,800	6,800 *	5,700 *	140.0	47.2	6,500	5,900 *	4,600 *	3,700 *							
140.0	44.3	7,200	6,800	5,900 *	4,900 *	150.0	43.1	5,200 *	4,900 *	3,700 *	3,100 *							
150.0	39.7	6,300	5,900	5,100 *	4,100 *	155.0	41.0	4,650 *	4,400 *	3,500 *								
160.0	34.8	5,300	5,100 *	4,000 *	3,400 *													
165.0	32.1	4,650	4,600 *	3,600 *														
<b>Reeves</b>	<b>2</b>	<b>2</b>	<b>2</b>	<b>2</b>		<b>Reeves</b>	<b>2</b>	<b>2</b>	<b>2</b>	<b>2</b>								

Refer to notes on page 32.





Note: This catalog may contain photographs of machines with specifications, attachments and optional equipment not certified for operation in your country. Please consult KOBELCO for those items you may require. Due to our policy of continual product improvements all designs and specifications are subject to change without advance notice.

Copyright by KOBELCO CRANES CO., LTD. No part of this catalog may be reproduced in any manner without notice.

---

## **KOBELCO CRANES CO., LTD.**

17-1, Higashigotanda 2-chome, Shinagawa-ku, Tokyo 141-8626 JAPAN  
Tel: +81-3-5789-2130 Fax: +81-3-5789-3372  
URL: <http://www.kobelco-cranes.com/>

Inquiries To:

## **KOBELCO CRANES NORTH AMERICA, INC.**

10845 Train Court, Houston, Texas 77041, USA  
Tel: +1-713-856-5755 Fax: +1-713-856-9072  
URL: <http://www.kobelcocranesnorthamerica.com/>