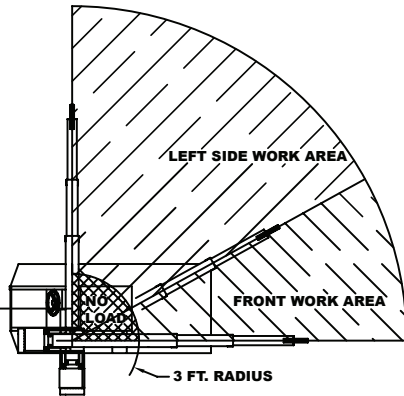
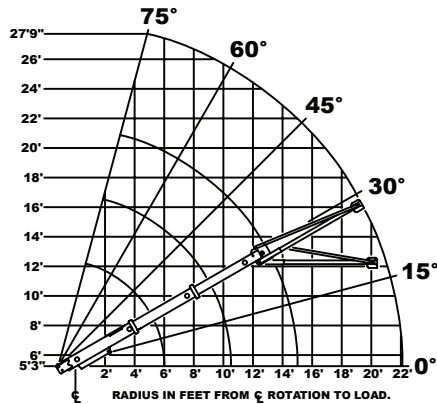


Load Chart US Standard



WORK AREA DIAGRAM

NOTE: DO NOT OPERATE INSIDE 3-FOOT LOAD RADIUS. JIB MAY BE OPERATED IN ALL WORKING AREAS.

Pick and carry with the shortest practical boom, centered over the front axle. Operate with the boom as low as possible, with the load close to the ground. Pick and carry capacities are for smooth, level, paved surfaces.

| CAPACITIES IN LBS. FOR OPERATION ON FIRM LEVEL SURFACE | | | | | |
|--|-----------------|---------------------|---------------------|-------------------------|--------------------------------------|
| LOAD RADIUS FEET | 3-SECTION BOOM | | | | 7-FT. JIB ON RUBBER OR OUTRIGGERS |
| | FRONT ON RUBBER | FRONT ON OUTRIGGERS | LEFT SIDE ON RUBBER | LEFT SIDE ON OUTRIGGERS | |
| 4 | 2500 | 5000 | 3800 | 5000 | 1300 |
| 5 | 2000 | 4000 | 3100 | 4000 | 1100 |
| 6 | 1500 | 3300 | 2500 | 3300 | 750 |
| 8 | 1400 | 2500 | 1500 | 2500 | 650 |
| 10 | 1300 | 2000 | 1000 | 2000 | 550 |
| 12 | 1200 | 1600 | 750 | 1400 | 500 |
| 15 | 1100 | 1200 | 500 | 1000 | 500 |
| 17 | | | | | 425 |
| 19 | | | | | 325 |
| 22 | | | | | 225 |

Boom angle must not be less than 30° except while rigging if the jib is in the 30° offset position.

Load hook, downhaul weight, hook blocks, and other load handling devices shall be considered part of the load except for hoist rope.

Deck load capacity 5,000 lbs. (centered over axle). Carry speed 3 mph max. The booms on this unit are all steel and have no line voltage rating.

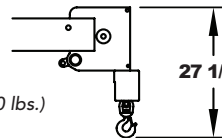
All capacities apply to firm level surfaces.

Ensure anti-two block switch is functional after installing or removing jib. Maximum hydraulic pressure 2,500 PSI.

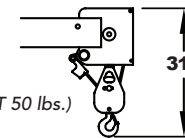
The load hoist line on this unit must be 5/16" dia. 6X36- IPS-IWRC wire rope with a minimum breaking strength of 9,160 lbs.

Tire pressure 145 PSI for 7.50-10 16PR; torque front wheel nuts to 60 ft. lbs., rear wheel nuts to 200 ft. lbs. (These conditions must be maintained to handle rated loads on this crane.)

USE SINGLE PART
LOAD LINE FOR LOAD
TO 2,500 lbs.
(DOWNHAUL WEIGHT 40 lbs.)



USE TWO PART
LOAD LINE FOR LOAD
TO 5,000 lbs.
(SHEAVE BLOCK WEIGHT 50 lbs.)



OPERATION

1. Read and understand the operation and maintenance manual before operating this crane.
2. Check level of engine oil and hydraulic oil daily.
3. Check unit for visible defects and loose parts daily.
4. Start engine.
5. Set vehicle park brake securely.
6. Extend outriggers to solid footing.
7. Operate all hydraulic controls slowly and smoothly. Avoid sudden starts and stops.
8. Drive slowly when making sharp turns on slopes.

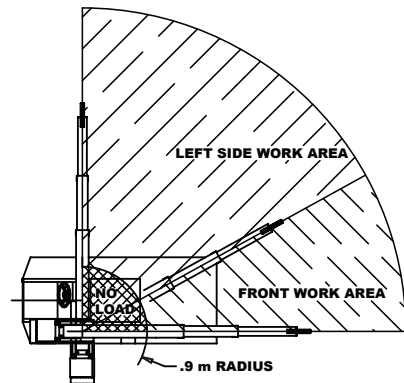
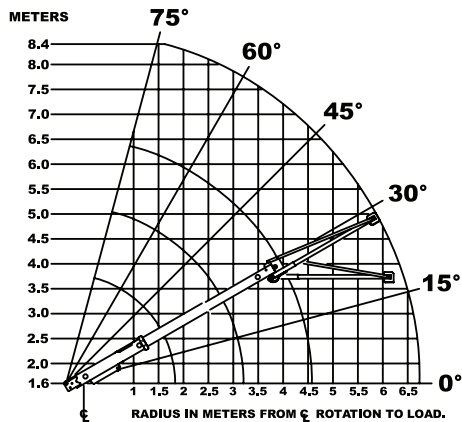
LOAD RADIUS IS THE HORIZONTAL DISTANCE FROM THE CENTER OF ROTATION OF THE UNLOADED CRANE TO THE VERTICAL LOAD LINE WITH THE LOAD APPLIED.

EXCEEDING CAPACITY RATINGS OR APPLYING SIDE LOADS TO THE BOOM OR JIB IS MISUSE, HAZARDOUS, AND VOIDS WARRANTY.

CAUTION: BOOM EXTENSION LOADS MUST NOT EXCEED MAIN BOOM CAPACITY. DO NOT PICK AND CARRY WITH LOADS ON BOOM EXTENSION.

CAPACITIES ON OUTRIGGERS ARE 85% OF TIPPING LOADS. CAPACITIES ON RUBBER ARE 75% OF TIPPING LOADS. CAPACITIES BELOW BOLD LINE ARE LIMITED BY TIPPING. OTHER CAPACITIES ARE LIMITED BY STRUCTURAL OR HYDRAULIC CAPABILITY.

Load Chart Metric



WORK AREA DIAGRAM

NOTE: DO NOT OPERATE INSIDE .9 METER LOAD RADIUS. JIB MAY BE OPERATED IN ALL WORKING AREAS.

Pick and carry with the shortest practical boom, centered over the front axle. Operate with the boom as low as possible, with the load close to the ground. Pick and carry capacities are for smooth, level, paved surfaces.

| CAPACITIES IN KILOGRAMS FOR OPERATION ON FIRM LEVEL SURFACE | | | | | |
|---|-----------------|---------------------|---------------------|-------------------------|-------------------------|
| LOAD RADIUS METERS | 3-SECTION BOOM | | | | 2.1 m JIB |
| | FRONT ON RUBBER | FRONT ON OUTRIGGERS | LEFT SIDE ON RUBBER | LEFT SIDE ON OUTRIGGERS | ON RUBBER OR OUTRIGGERS |
| 1.2 | 1130 | 2270 | 1720 | 2270 | 590 |
| 1.5 | 920 | 1840 | 1430 | 1840 | 510 |
| 2.0 | 670 | 1370 | 990 | 1370 | 310 |
| 2.5 | 630 | 1110 | 650 | 1110 | 290 |
| 3.0 | 590 | 920 | 460 | 920 | 250 |
| 3.5 | 550 | 770 | 370 | 700 | 230 |
| 4.0 | 520 | 660 | 290 | 530 | 220 |
| 4.5 | 500 | 550 | 230 | 460 | 220 |
| 5.0 | | | | | 200 |
| 5.5 | | | | | 170 |
| 6.0 | | | | | 130 |
| 6.7 | | | | | 100 |

Boom angle must not be less than 30° except while rigging if the jib is in the 30° offset position.

Load hook, downhaul weight, hook blocks, and other load handling devices shall be considered part of the load except for hoist rope.

Deck load capacity 2,270 kg (centered over axle). Carry speed 5 km/h max. The booms on this unit are all steel and have no line voltage rating.

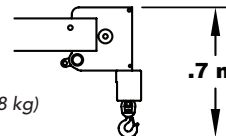
All capacities apply to firm level surfaces.

Ensure anti-two block switch is functional after installing or removing jib. Maximum hydraulic pressure 172 bar.

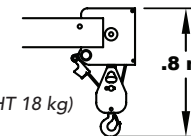
The load hoist line on this unit must be 7.9mm dia. 6X36- IPS-IWRC wire rope with a minimum breaking strength of 4,155 kg.

Tire pressure 1,000 PA for 7.50-10 16PR; torque front wheel nuts to 80 Nm, rear wheel nuts to 270 Nm. (These conditions must be maintained to handle rated loads on this crane.)

USE SINGLE PART LOAD LINE FOR LOAD TO 1135 kg (DOWNHAUL WEIGHT 18 kg)



USE TWO PART LOAD LINE FOR LOAD TO 2270 kg (SHEAVE BLOCK WEIGHT 18 kg)



OPERATION

1. Read and understand the operation and maintenance manual before operating this crane.
2. Check level of engine oil and hydraulic oil daily.
3. Check unit for visible defects and loose parts daily.
4. Start engine.
5. Set vehicle park brake securely.
6. Extend outriggers to solid footing.
7. Operate all hydraulic controls slowly and smoothly. Avoid sudden starts and stops.
8. Drive slowly when making sharp turns on slopes.

LOAD RADIUS IS THE HORIZONTAL DISTANCE FROM THE CENTER OF ROTATION OF THE UNLOADED CRANE TO THE VERTICAL LOAD LINE WITH THE LOAD APPLIED.

EXCEEDING CAPACITY RATINGS OR APPLYING SIDE LOADS TO THE BOOM OR JIB IS MISUSE, HAZARDOUS, AND VOIDS WARRANTY.

CAUTION: BOOM EXTENSION LOADS MUST NOT EXCEED MAIN BOOM CAPACITY. DO NOT PICK AND CARRY WITH LOADS ON BOOM EXTENSION.

CAPACITIES ON OUTRIGGERS ARE 85% OF TIPPING LOADS. CAPACITIES ON RUBBER ARE 75% OF TIPPING LOADS. CAPACITIES BELOW BOLD LINE ARE LIMITED BY TIPPING. OTHER CAPACITIES ARE LIMITED BY STRUCTURAL OR HYDRAULIC CAPABILITY.